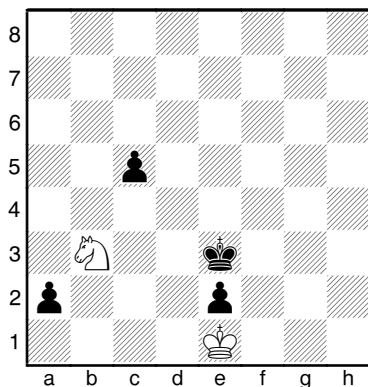
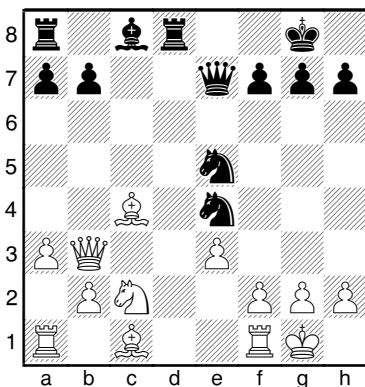


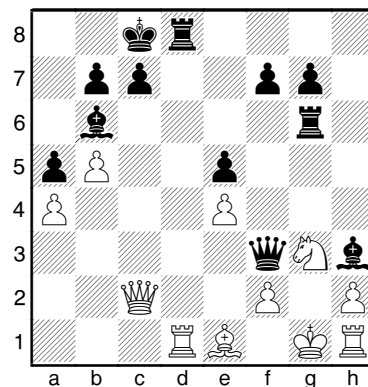
(1501) Tichomirowa – Woizik
Partievariante, 1960



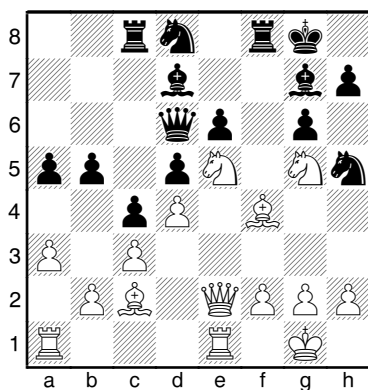
(1504) Viitanen – Pyhlaelae
Helsinki, 1981



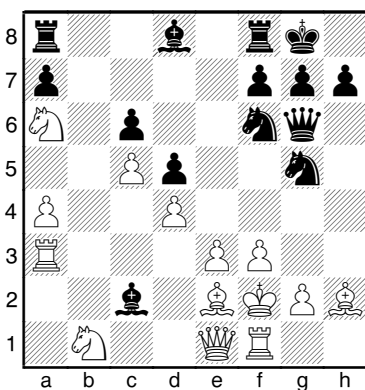
(1507) Troitzky – Vogt
Petersburg, 1896



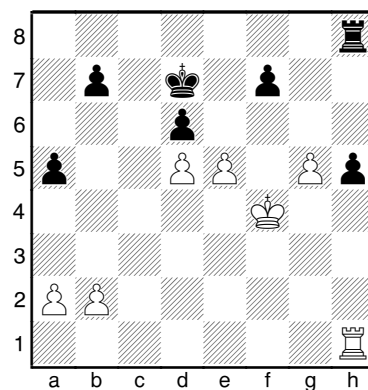
(1502) Kleeschaetzky – Welz
Leinefelde, 1981



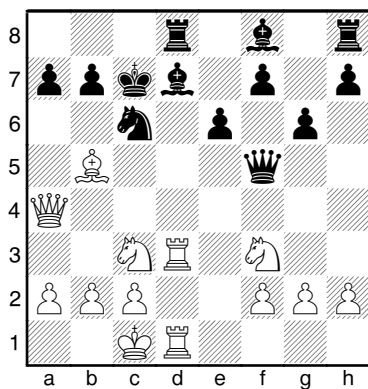
(1505) Sitek – Mendel
Fernpartie, 1980



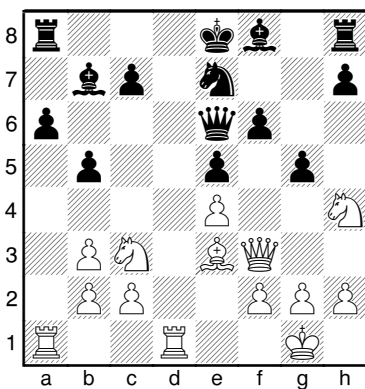
(1508) Sanguinetti – Fischer
Santiago, 1959



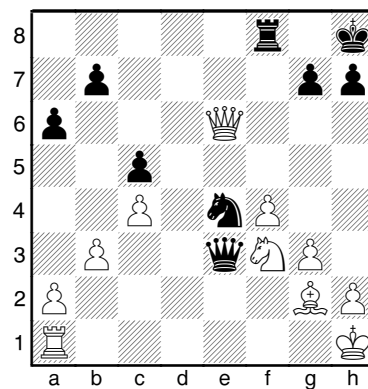
(1503) From – Isaksen
Daenemark, 1981



(1506) Spasski – Taimanow
Moskau, 1954

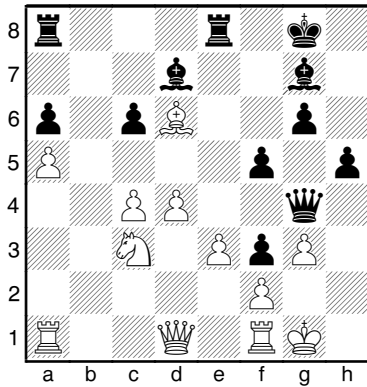


(1509) Peltomaeki – Nykaenen
Helsinki, 1981



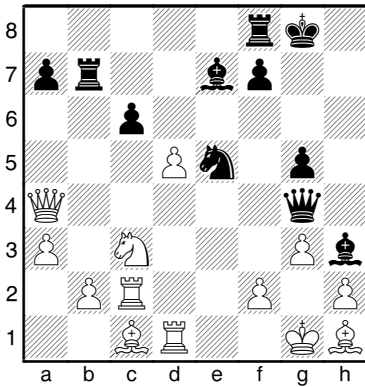
(1510) Hoelz – Tal

La Valetta, 1980



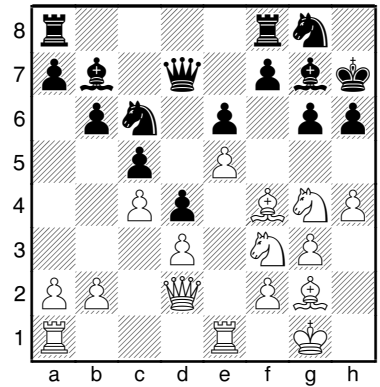
(1513) Corrigan – Brown

Paris, 1980



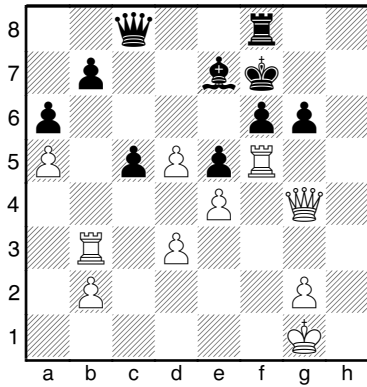
(1516) Travnicek – Belke

Dresden, 1981



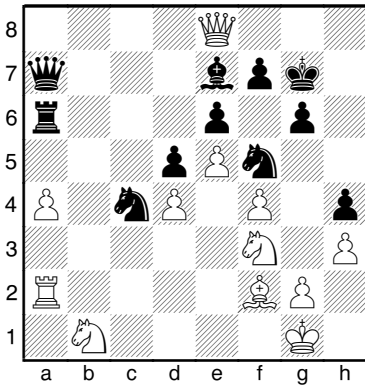
(1511) Balaschow – Herzog v. Braunschweig

La Valetta, 1980



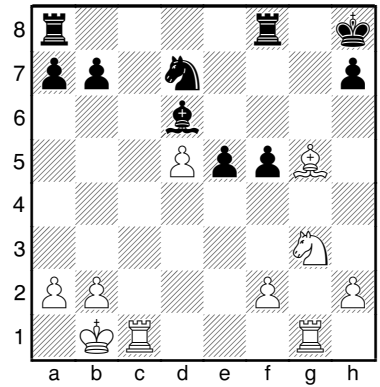
(1514) Aljuschzew – Shurawlew

UdSSR, 1980



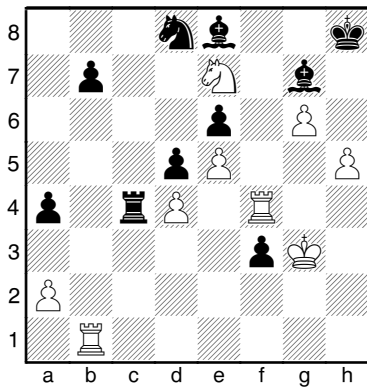
(1517) Starck – Jakat

Dresden, 1981



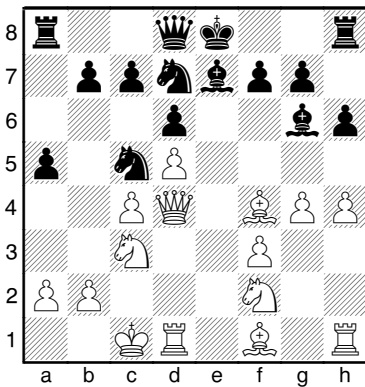
(1512) Georgadse – Mnazakanjan

Samtredia, 1981



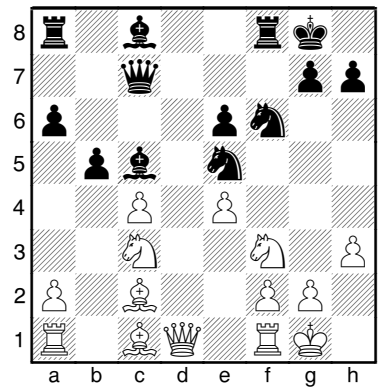
(1515) Magalotti – Pantaleoni

Bologna, 1980



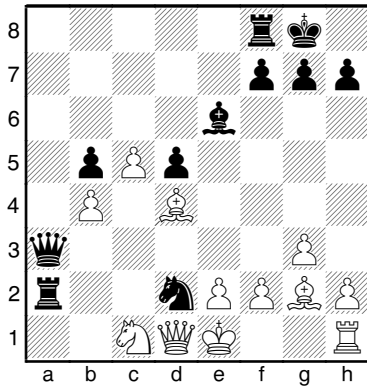
(1518) Waganjan – Pantschenko

Moskau, 1981



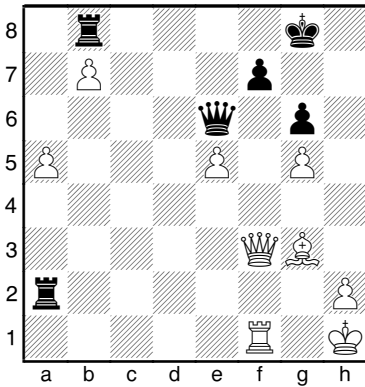
(1519) Bronstein – Andrijanow

Moskau, 1981



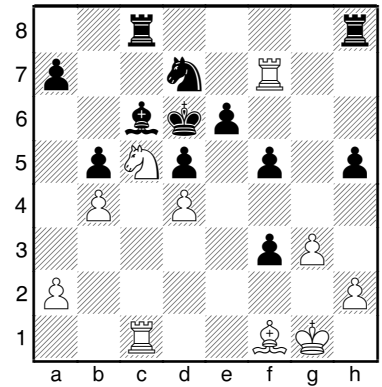
(1522) Honkola – Koskinen

Helsinki, 1981



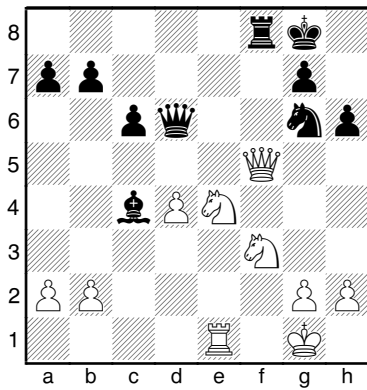
(1525) Baumbach – Varasdy

Partievariante, 1981



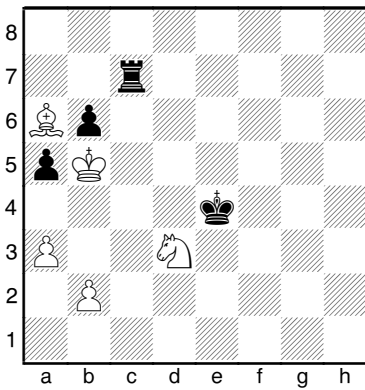
(1520) Below – Nowopaschin

Nikolajew, 1981



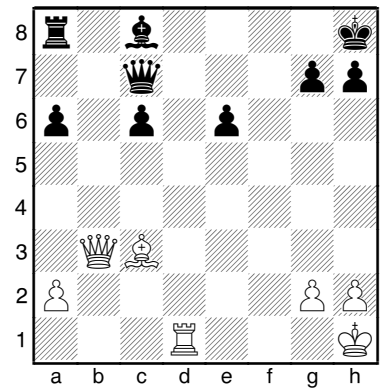
(1523) Ewald – Skorna

Frankfurt, 1981



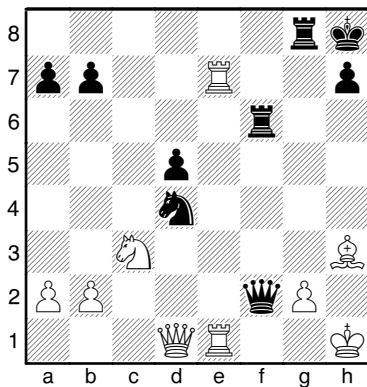
(1526) Tarrasch – Richter

Halle, 1882



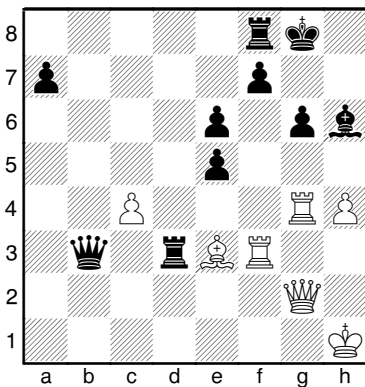
(1521) Saakowa – Fomina

Solotscha, 1981



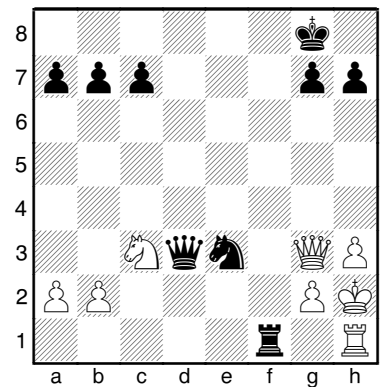
(1524) Garik – Baumbach

Prievidza, 1981



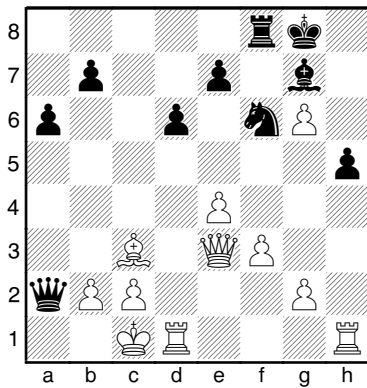
(1527) Riemann – Tarrasch

Leipzig, 1883



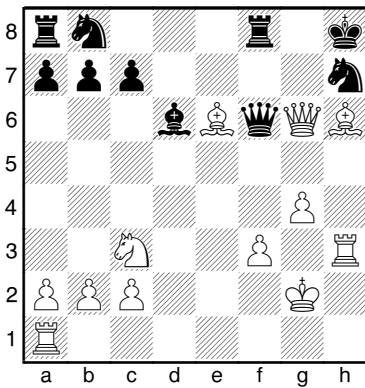
(1528) Rieck – Lotzwick

Fernpartie, 1978



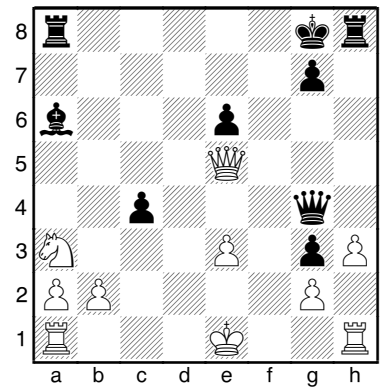
(1531) Woitkewitsch – Klimakow

Riga, 1980



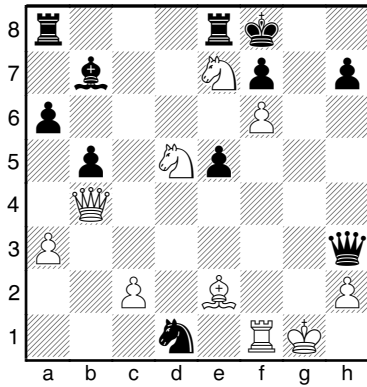
(1534) Sweschnikow – Zeschkowski

Frunse, 1981



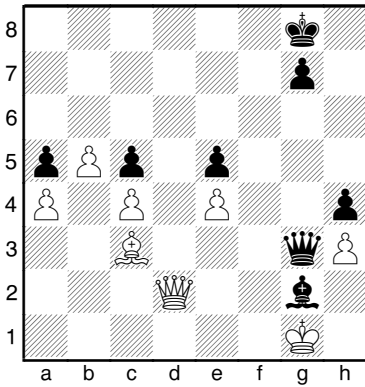
(1529) Lengyel – Farago

Budapest, 1981



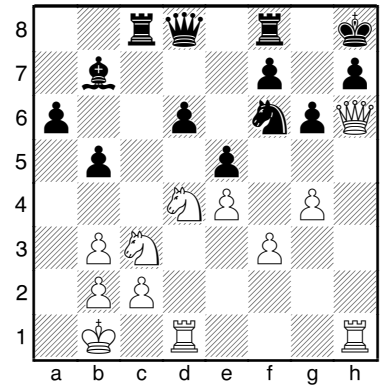
(1532) Sajaz – Grinberg

Rostow, 1980



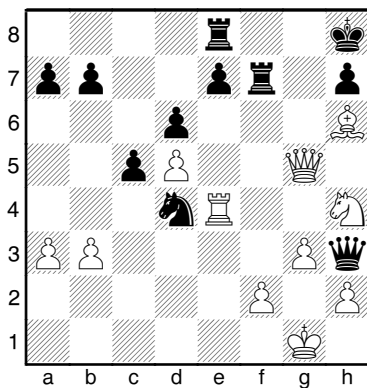
(1535) Panu – Brosius

Pula, 1980



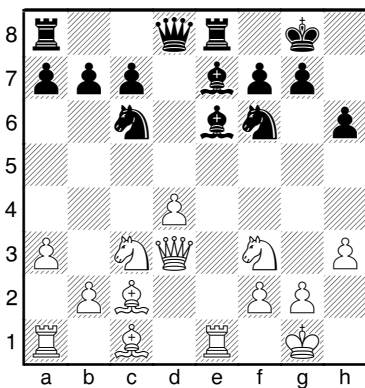
(1530) Ammann – Lerch

Biel, 1981



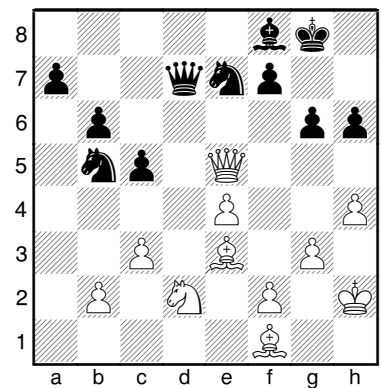
(1533) Chandler – Nielsen

Hamburg, 1981



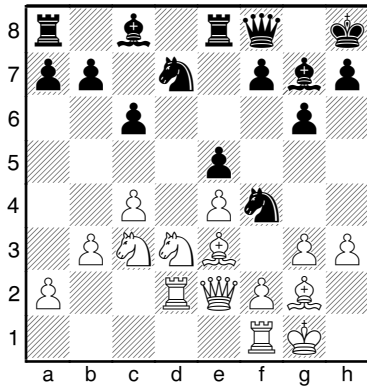
(1536) Wasjukow – Lutikow

Belzy, 1981



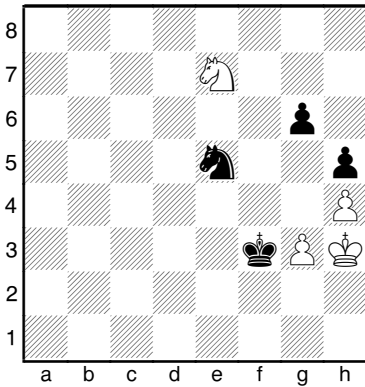
(1537) Chaya – Pirttimaeki

Graz, 1981



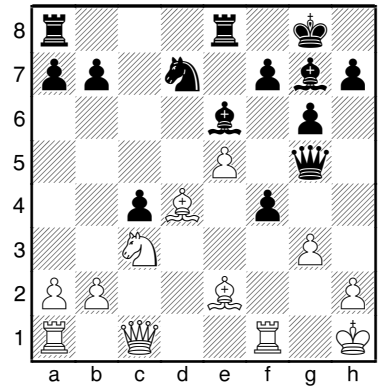
(1540) Gines – Trias

Badalona, 1981



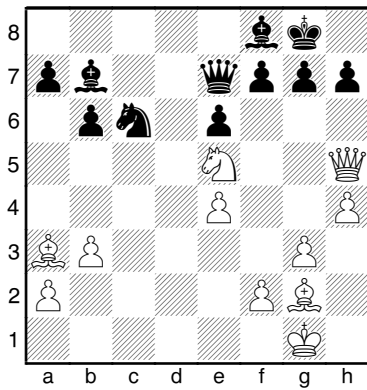
(1543) Szewcyk – Leisebein

Fernpartie, 1981



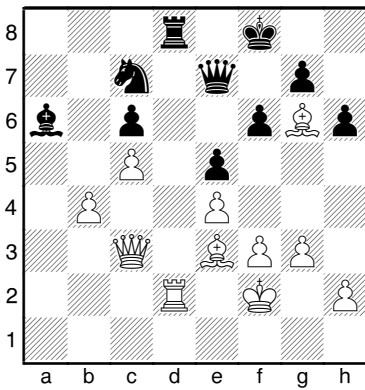
(1538) Espig – Lukow

Sotschi, 1981



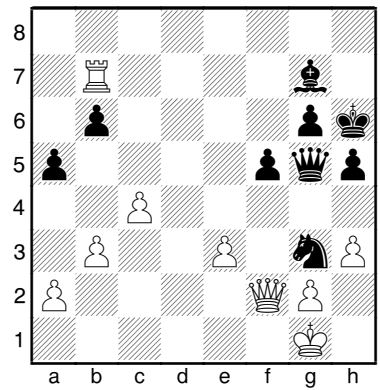
(1541) Jacobs – Micheel

Fernpartie, 1981



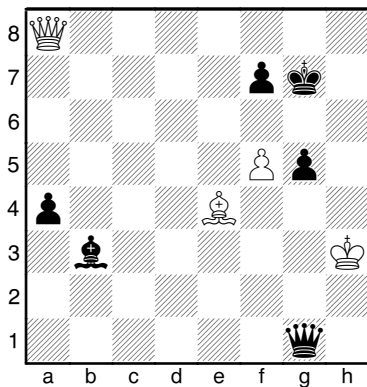
(1544) Bemporad – Caselli

Italian, 1978



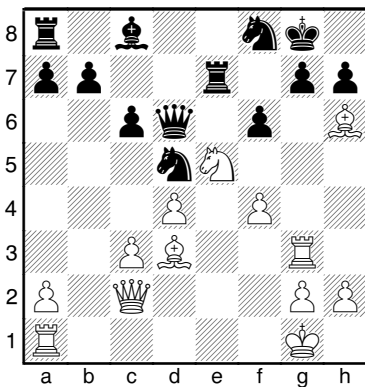
(1539) Borik – Suba

Dortmund, 1981



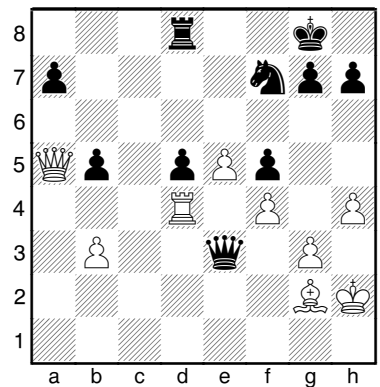
(1542) Schmidt – Fiedler

Fernpartie

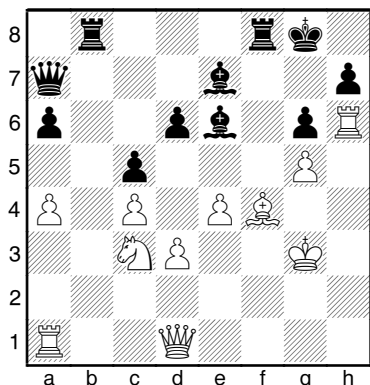


(1545) Sanna – Motwari

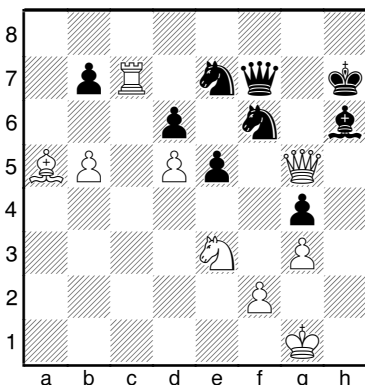
Groningen, 1980



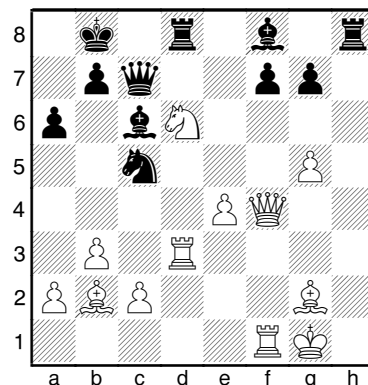
(1546) Wenghoeffer – Zinser
Strasbourg, 1980



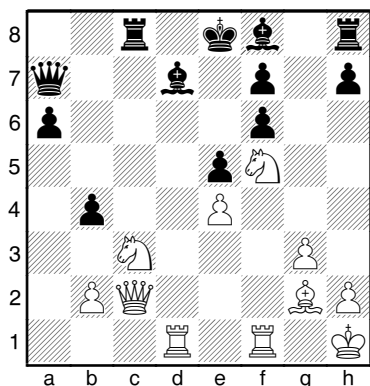
(1549) Seirawan – Rawikumar
Schien, 1979



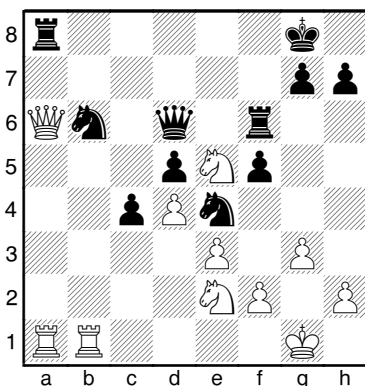
(1552) Christiansen – Heim
Oslo, 1981



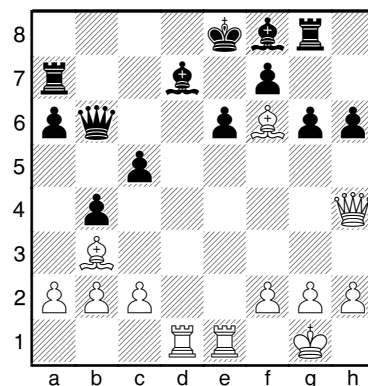
(1547) Vreeken – Litinskaja
Hyeres, 1981



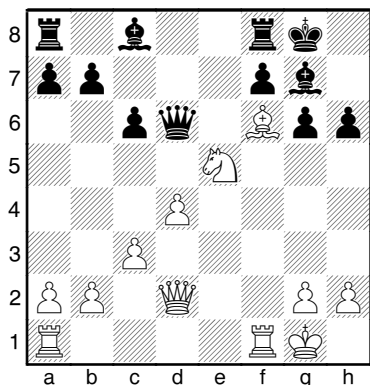
(1550) Szoelloesi – Boguszlawski
Ungarn, 1981



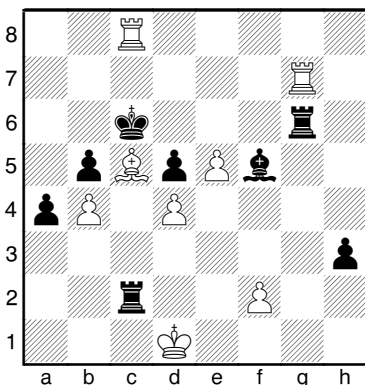
(1553) Okladnikow – Gurow
Nowosibirsk, 1981



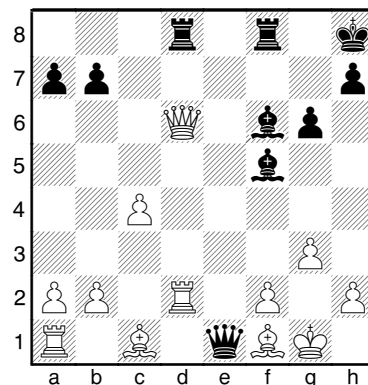
(1548) Popow – Lipnizki
Moskau, 1978



(1551) Podrajanskaja – Nyberg
Bad Kissingen, 1982

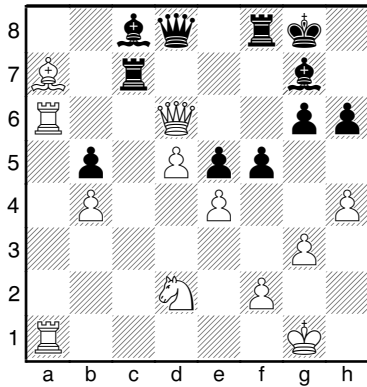


(1554) Arboscelli – Pernici
Mailand, 1979



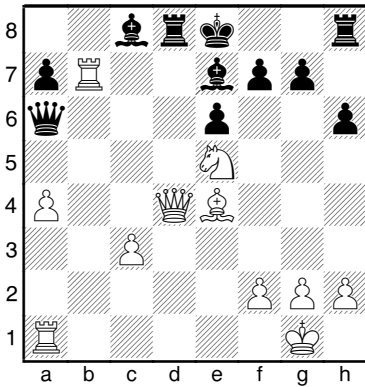
(1555) Gutman – Rantanen

Randers, 1982



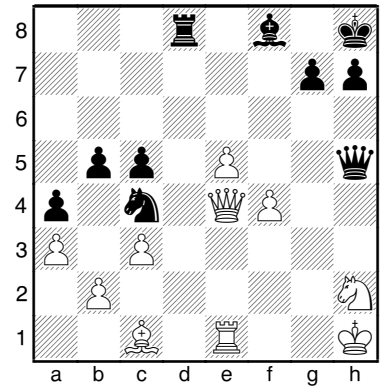
(1558) Tichatschke – Groschup

Dresden, 1980



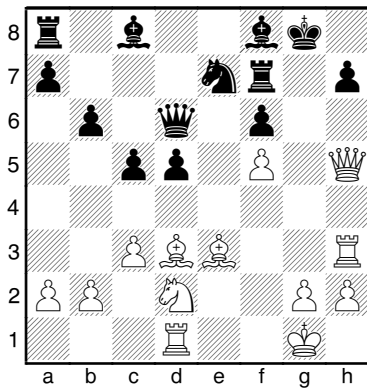
(1561) Zechkowski – Aksamow

Frunse, 1981



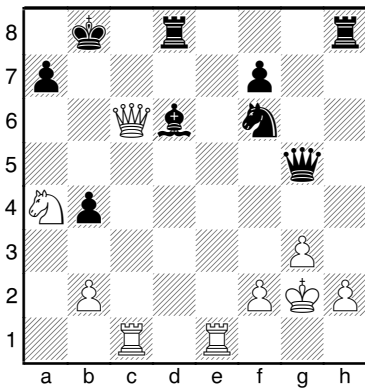
(1556) Schmidt – Meissner

Dresden, 1981



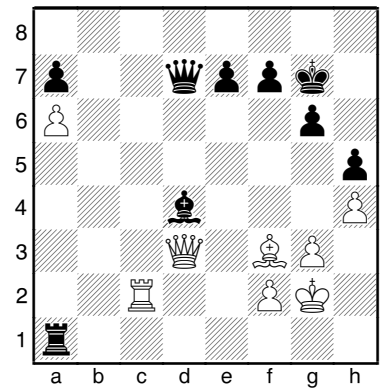
(1559) Anikajew – Westerinen

Moskau, 1982



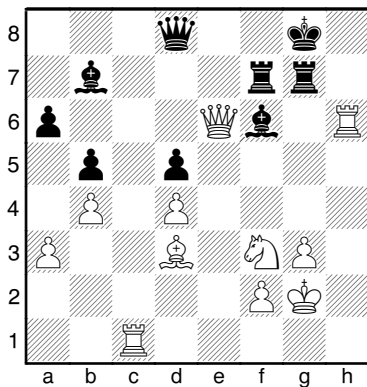
(1562) Laird – Birnboim

Lugano, 1981



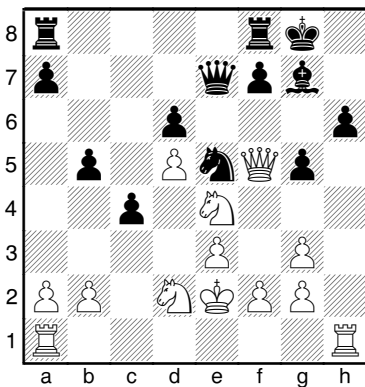
(1557) Gstrein – Peierl

Lienz, 1980



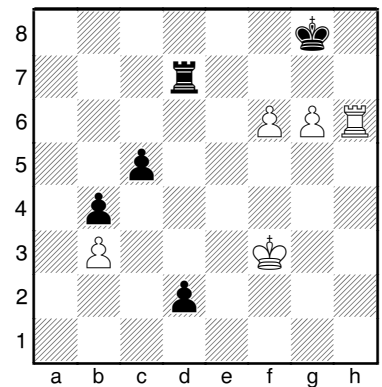
(1560) Psachis – Gawrikow

Jerewan, 1982

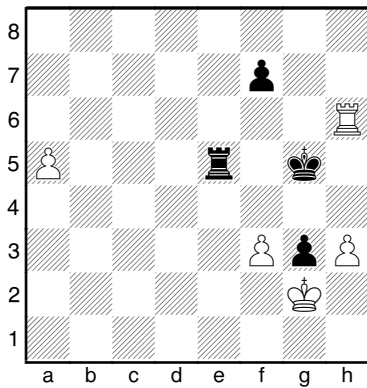


(1563) Gutman – Feustel

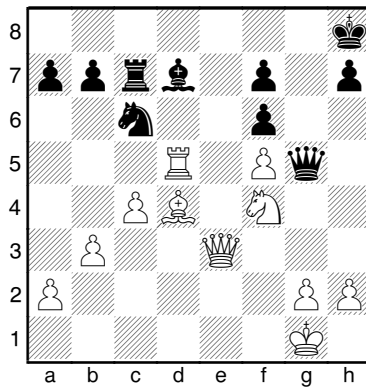
Randers, 1982



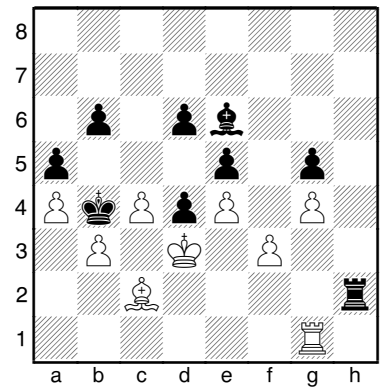
(1564) Agsamow – Sweschnikow
Partievariante, 1981



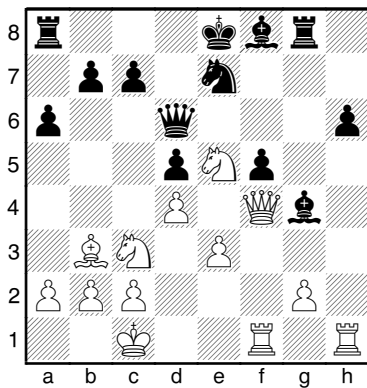
(1567) Akesson – Runneby
Schweden, 1982



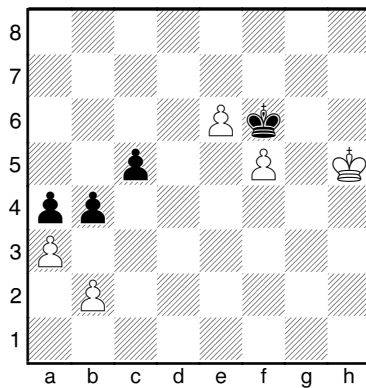
(1570) Alenius – Holopainen
Helsinki, 1982



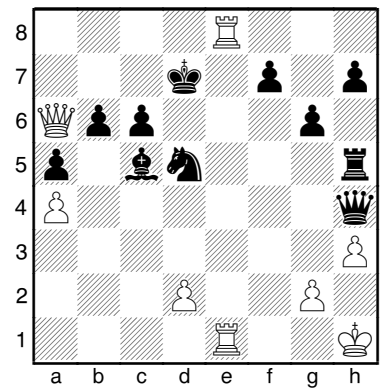
(1565) Moonen – Wind
Holland, 1982



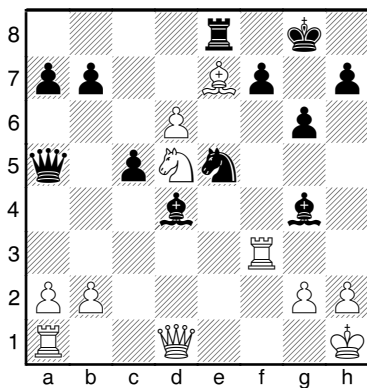
(1568) Quinteros – Andersson
Partievariante, 1981



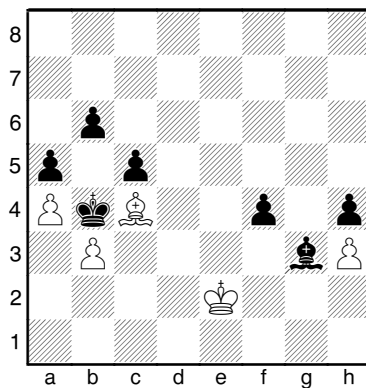
(1571) Kimmelfeld – Ulaschuk
Taschkent, 1976



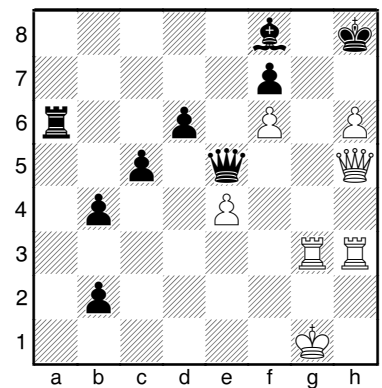
(1566) Graf – Matthis
Fernpartie, 1981



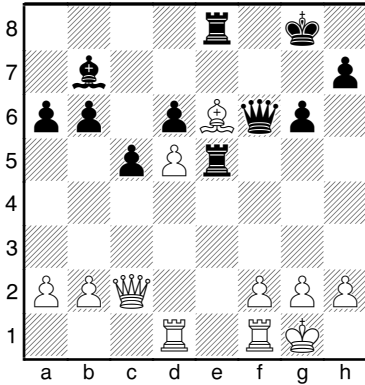
(1569) Kiviharju – Ehrnrooth
Finnland, 1982



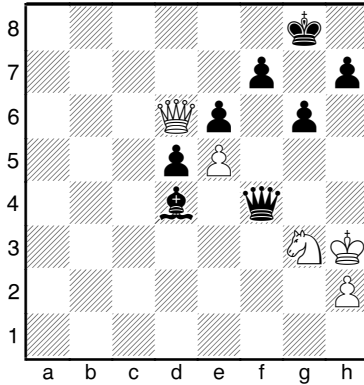
(1572) Falk – Ostojic
Wiesbaden, 1981



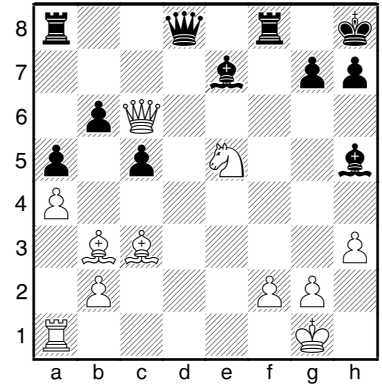
(1573) Johelsson – Belawenez
Olympiade, 1979



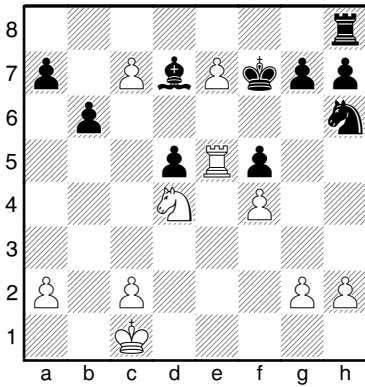
(1576) Mufics – Gross
Tapolca, 1882



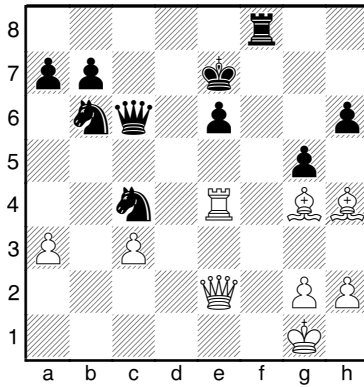
(1579) Mueller – Pospisyl
Senftenberg, 1980



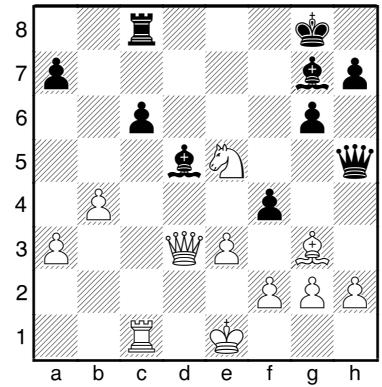
(1574) Tulin – Rjabow
Fernpartie, 1930



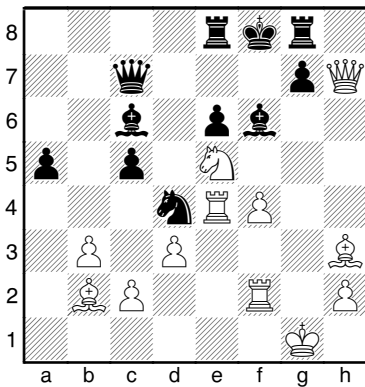
(1577) Dolschenko – Sagoruyko
Fernpartie, 1973



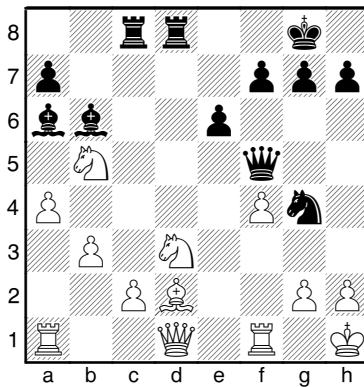
(1580) Ribli – Chandler
Surakarta, 1982



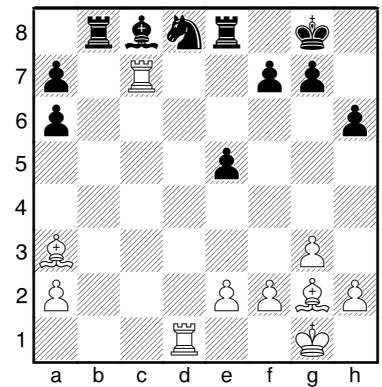
(1575) Steinitz – Weiss
Wien, 1882



(1578) Abramovic – Westerinen
Moskau, 1982

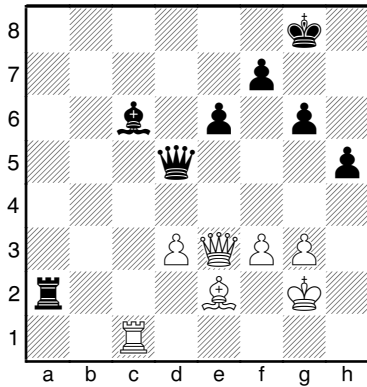


(1581) Christiansen – Radulow
Bali, 1982



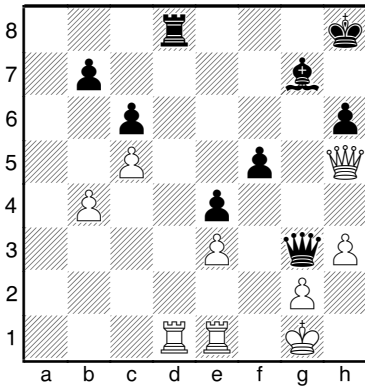
(1582) Gillefalk – Samuelson

Malmoe, 1982



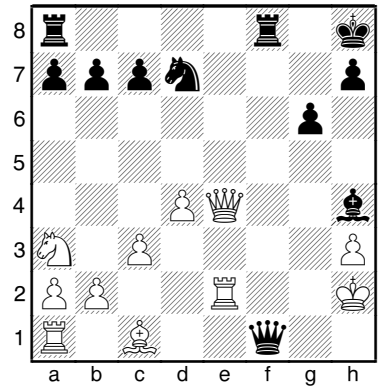
(1585) Andersson – Mestel

Partievariante, 1982



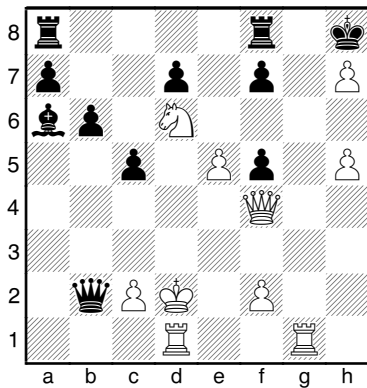
(1588) Goldstein – Meschkow

Smolensk, 1982



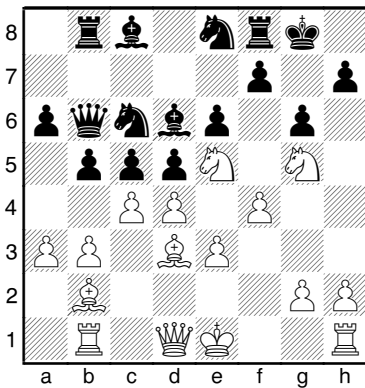
(1583) Aljechin – Anderson

Chicago, 1933



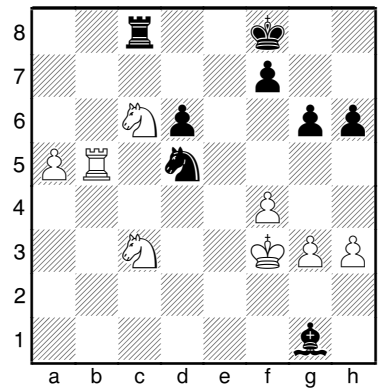
(1586) Swinarjow – Jakobjanz

Zchakaja, 1982



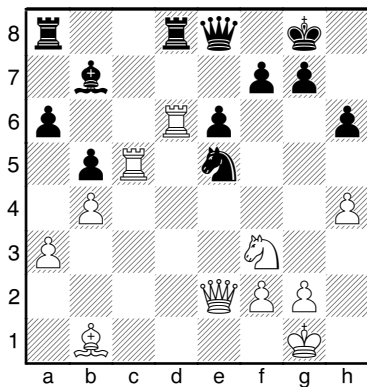
(1589) Tuominen – Tanner

Helsinki, 1981



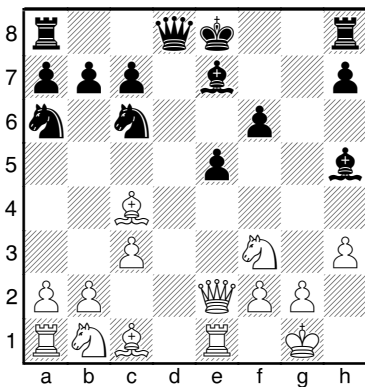
(1584) Geller – Waganjan

Partievariante, 1982



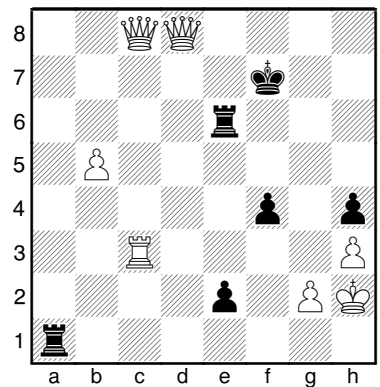
(1587) Monostori – Heinrich

Fernpartie, 1981



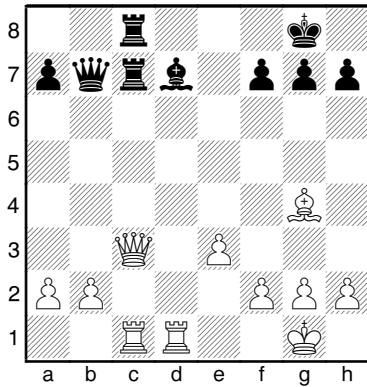
(1590) Lampinen – Tuominen

Partievariante, 1977



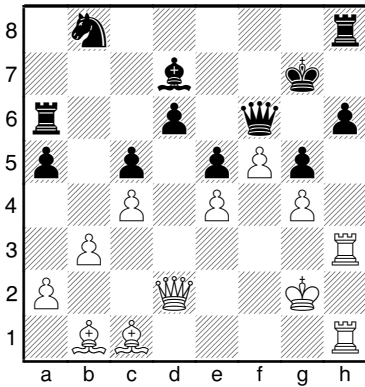
(1591) Hansch – Belling

Stendal, 1982



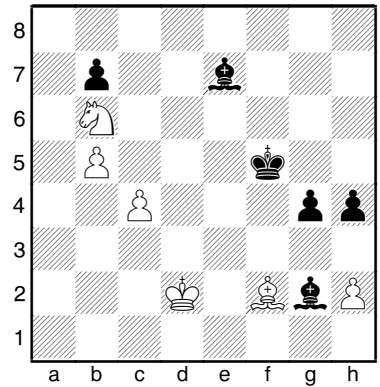
(1594) Klowski – Aksamow

Jerewan, 1982



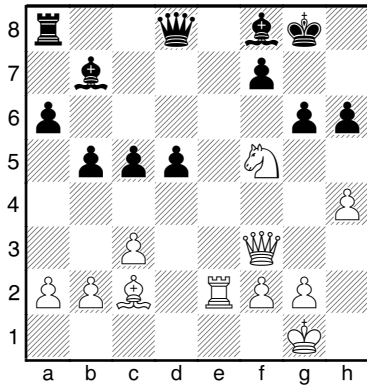
(1597) Pihajlicova – Klimova

Decin, 1982



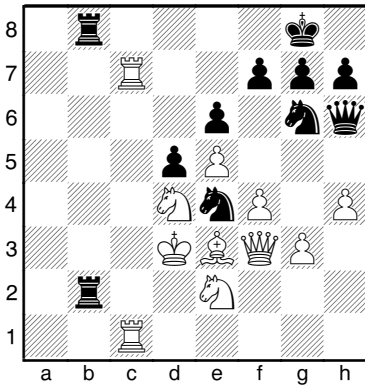
(1592) Blosze – Dietz

Fernpartie, 1982



(1595) Burmakin – Portnjagin

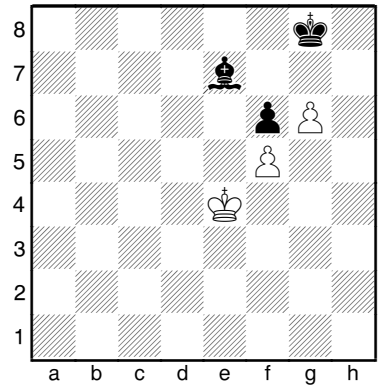
Abakau, 1981



(1598) Sterenberg –

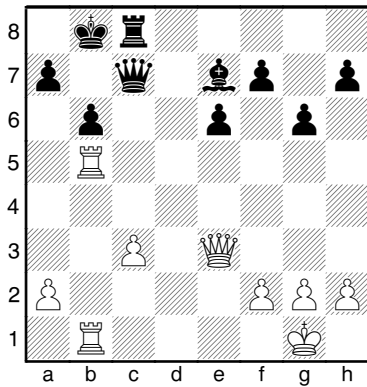
Semjonowa

Bad Kissingen, 1982



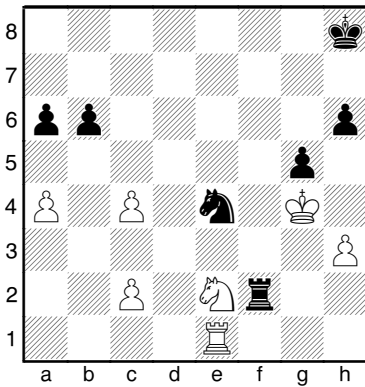
(1593) Keller – Gruenfeld

Luzern, 1982



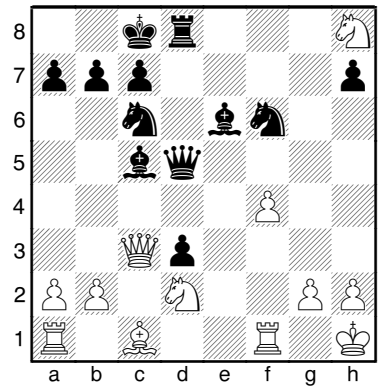
(1596) Pritzker – Bolschunow

Winniza, 1982



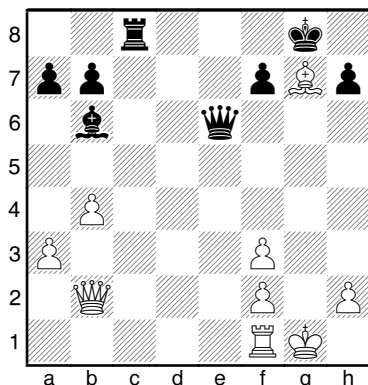
(1599) Maekinen – Terko

Finnland, 1982



(1600) Miles – Portisch

Luzern, 1982

**(1501) Tichomirowa – Woizik**

Partievariante, 1960

1...Rd3 2.Ce1+ Rc2 [2...Rc3] 3.Cxa2
Rb2 4.Rxe2 Rxa2 5.Rd3 Rb3 0-1

(1502) Kleeschaetzky – Welz

Leinefelde, 1981

1.Dxh5 gxh5 2.Axh7+ Rh8 3.Cg6# 1-0

(1503) From – Isaksen

Daenemark, 1981

1.Txd7+ Txd7 2.Txd7+ Rxd7 3.Dd4+
1-0

(1504) Viitanen – Pyhaelae

Helsinki, 1981

1...Cf3+ 2.gxf3 Dg5+ 3.Rh1 Td1 4.Ce1
[4.fxe4 Ah3] 4...Txe1 0-1

(1505) Sitek – Mendel

Fernpartie, 1980

1...Ch3+ 2.gxh3 Ce4+ 3.fxe4 Ah4+
4.Rf3 Dxe4# 0-1

(1506) Spasski – Taimanow

Moskau, 1954

1.Cxb5 axb5 2.Dh5+ [2.Txa8+++]
2...Df7 3.Txa8+ Axa8 4.Td8+ Rxd8
5.Dxf7 gxh4 6.Dxf6 1-0

(1507) Troitzky – Vogt

Petersburg, 1896

1.Txd8+ Rxd8 2.Dd1+ Dxd1 ½-½

(1508) Sanguinetti – Fischer

Santiago, 1959

1.e6+ fxe6 2.g6 exd5 3.Txh5 Txh5 [3...Te8 4.Rg5 Te1 5.g7] 4.g7 Te5 5.g8D
1-0

(1509) Peltomaeki – Nykaenen

Helsinki, 1981

1.Ah3 Dxf3+ 2.Ag2 Dc3 3.Tf1 1-0

(1510) Hoelz – Tal

La Valetta, 1980

1...f4 [1...h4 2.Te1±] 2.Axf4 g5 3.Axg5
Tf8 [3...Dxg5 4.Dxf3±] 4.Af4 Axd4
5.Cd5 [5.exd4 Txf4 6.Db1 Rh8]
5...Axa1 0-1

(1511) Balaschow – Herzog v.

Braunschweig

La Valetta, 1980

1.d4 cxd4 [1...gxf5 2.Dh5+ Rg7
3.Tg3#; 1...Ad6 2.dxe5 Axe5 3.Dh3
gxf5 4.Txb7+ Dxb7 5.Dh7+] 2.Th3 Tg8
3.Th7+ Re8 4.d6 Axd6 5.Txe5+ Rd8
6.Dxc8+ 1-0

(1512) Georgadse – Mnazakanjan

Samtredia, 1981

1.h6 Axh6 2.Tf8+ Axf8 3.Th1+ Ah6
4.Txh6+ Rg7 5.Th7+ Rf8 6.g7+ 1-0

(1513) Corrigan – Brown

Paris, 1980

1...Tb4 2.axb4 Cf3+ 3.Axf3 Dxf3 0-1

(1514) Aljuschzew – Shurawlew

UdSSR, 1980

1...Ccd6 [1...Cfd6 2.exd6 Cxd6±]
2.exd6 Cxd6 0-1

(1515) Magalotti – Pantaleoni

Bologna, 1980

1...Cb3+ 2.axb3 Cc5 0-1

(1516) Travnicek – Belke

Dresden, 1981

1.Axh6 Axh6 2.Dxh6+ Cxh6 3.Cf6+
Rg7 4.Cxd7 1-0

(1517) Starck – Jakat

Dresden, 1981

1.Ah6 Tf6 2.Cxf5 Af8 [2...Txf5
3.Ag7+ Rg8 4.Axe5+] 3.Axf8 Taxf8
4.Tc7 Txf5 5.Txd7 1-0

(1518) Waganjan –

Pantschenko

Moskau, 1981

1...Cf4 2.Cxe5 [2.hxg4 Cxf3+ 3.gxf3
Dg3+ 4.Rh1 Dh3+ 5.Rg1 Txf3 6.Dd8+
Tf8] 2...Cxf2 0-1

(1519) Bronstein – Andrijanow

Moskau, 1981

1...Cf3+ 2.Axf3 Dxb4+ 3.Rf1 Ah3+
4.Ag2 Td2 5.De1 Dxd4 [5...Axg2+!]
6.Cb3 De4 0-1

(1520) Below – Nowopaschin

Nikolajew, 1981

1...Db4 2.Dxg6 Dxe1+ 3.Cxe1 Tf1# 0-1

(1521) Saakowa – Fomina

Solotscha, 1981

1...Cf3 2.T1e2 [2.Tf1 Dxg2+ 3.Axg2
Th6+ 4.Ah3 Txh3#] 2...Dg3 3.gxf3
Dxh3+ 4.Th2 Dxh2+ 5.Rxh2 Th6# 0-1

(1522) Honkola – Koskinen

Helsinki, 1981

1.Dxf7+ Dxf7 2.Txf7 Rxf7 3.e6+ Rxe6
4.Axb8 1-0

(1523) Ewald – Skorna

Frankfurt, 1981

1...Rxd3 2.Rxb6+ Rc2 3.Rxc7 a4 4.b4
axb3 5.Ac8 b2 6.a4 Rb3 ½-½

(1524) Garik – Baumbach

Prievidza, 1981

1.Axh6 Txf3 2.Txg6+ Rh7 3.Tg7+ Rh8
4.Th7+ Rxh7 5.Dg7# 1-0

(1525) Baumbach – Varasdy

Partievariante, 1981

1.Axb5 Thd8 [1...Axb5 2.Cb7#]
2.Axe6 Cxc5 3.Ab5 Ce4 4.Txc8 Txc8
5.Td7# 1-0

(1526) Tarrasch – Richter

Halle, 1882

1.Aa5 Dxa5 2.Db4 [2.Da3!] 1-0

(1527) Riemann – Tarrasch

Leipzig, 1883

3...Cg4+ 4.Dxg4 Dd6+ 5.g3 Dd2+
6.Ce2 Tf2+ 7.Rg1 De1# 0-1

(1528) Rieck – Lotzwick

Fernpartie, 1978

1...Cxe4 2.fxe4 Tf2 3.Dxf2 Ah6+ 4.Td2
Da1# 0-1

(1529) Lengyel – Farago

Budapest, 1981

1.Cg6+ Rg8 2.Df8+ Txf8 3.Cde7# 1-0

(1530) Ammann – Lerch

Biel, 1981

1.Txd4 cxd4 2.Dh5 Rg8 3.Dg5+ Rh8
4.Dh5 ½-½

(1531) Woitkewitsch –**Klimakow**

Riga, 1980

1.Dxh7+ Rxh7 2.Axf8+ Rg6 3.Th6+ Rg5 4.Ce4+ 1-0

(1532) Sajaz – Grinberg

Rostow, 1980

1.Axe5 Dxe5 2.Dd5+ Dxd5 3.exd5 Axh3 4.b6 Ac8 5.d6 Rf7 6.d7 1-0

(1533) Chandler – Nielsen

Hamburg, 1981

1.Axh6 Dd7 [1...gxh6 2.Txe6 fxe6 3.Dg6+ Rh8 4.Dxh6+ Rg8 5.Dg6+ (5.Cg5+-) 5...Rh8 6.Cg5 Tf8 7.Dh6+ Rg8 8.Ah7+ Rh8 9.Af5+ Rg8 10.Axe6+ Tf7 11.Axf7#] 2.Ag5 1-0

(1534) Sweschnikow –**Zeschkowski**

Frunse, 1981

1...c3 2.Cb5 [2.hxg4 Txh1#] 2...cxb2 0-1

(1535) Panu – Brosius

Pula, 1980

1.Cf5 gxf5 [1...Tg8 2.Dxh7+ Cxh7 3.Txh7+ Rxh7 4.Th1+] 2.g5 1-0

(1536) Wasjukow – Lutikow

Belzy, 1981

1.Axb5 Dxb5 2.Ad4 f6 3.De6+ 1-0

(1537) Chaya – Pirttimaeki

Graz, 1981

1.gxf4 exf4 2.Cxf4 Axc3 3.Txd7 Axd7 4.Dd3 1-0

(1538) Espig – Lukow

Sotschi, 1981

1...Dxa3 2.Dxf7+ Rh8 3.Cd7 Cd8 4.Dxf8+ Dxf8 5.Cxf8 Ac8 0-1

(1539) Borik – Suba

Dortmund, 1981

1...g4+ 2.Rh4 Dh2+ 3.Rg5 [3.Rxg4 Ad1+ 4.Af3 Dg2+] 3...f6+ 4.Rxg4 Ad1+ 5.Af3 Dg2+ 0-1

(1540) Gines – Trias

Badalona, 1981

1...Cg4 2.Cxg6 Rf2 3.Cf4 Rg1 4.Cd3 Rh1 5.Cc5 Cf2# 0-1

(1541) Jacobs – Micheel

Fernpartie, 1981

1.Td6 Cb5 2.Db3 Te8 [2...Cxd6 3.cxd6 Dd7 (3...Txd6 4.Ac5) 4.Ac5 Ac8 5.Ah7] 3.Te6 Dd7 4.Axh6 1-0

(1542) Schmidt – Fiedler

Fernpartie

1.Axg7 Txg7 2.Axh7+ Cxh7 [2...Rh8 3.Cf7+ Txf7 4.Tg8#] 3.Txg7+ Rxg7 4.Dg6+ Rh8 5.Cf7# 1-0

(1543) Szewczyk – Leisebein

Fernpartie, 1981

1...Cxe5 2.gxf4 Cd3 3.Dd1 [3.Axd3 Ad5+ 4.Cxd5 Dxd5+; 3.fxg5 Cxc1 4.Taxc1 (4.Axg7 Cxe2) 4...Axd4] 3...Cxf4 0-1

(1544) Bemporad – Caselli

Italien, 1978

1...Ad4 2.exd4 [2.Rh2 Axe3 3.Dxg3 Af4] 2...Dc1+ 3.Rh2 h4 4.Dg1 Cf1+ [4...Df4? 5.Dd1=] 5.Rh1 Df4 6.g4 Cg3+ 7.Rg2 De4+ 8.Rh2 Dxb7 0-1

(1545) Sanna – Motwari

Groningen, 1980

1.e6 Dxe6 2.Dxd8+ Cxd8 3.Axd5 1-0

(1546) Wenghoeffer – Zinser

Strasbourg, 1980

1...Txf4 2.Rxf4 Axc5+ 3.Rxg5 De7+ 4.Rf4 Tf8+ 5.Rg3 Dg5+ 0-1

(1547) Vreeken – Litinskaja

Hyeres, 1981

1.Txd7 Dxd7 2.Td1 Dc6 3.Cd5 Ac5 [3...Dxc2 4.Cxf6#] 4.Dxc5 [4.Dd2! 4...Td8 5.Cg7+ Rf8 6.Dh6] 4...Dxc5 5.Cxf6+ Rf8 6.Cd7+ Re8 7.Cxc5 1-0

(1548) Popow – Lipnizki

Moskau, 1978

1.Axg7 Rxg7 2.Txf7+ Txf7 3.Dxh6+ Rg8 4.Dh8+ Rxh8 5.Cxf7+ Rg7 6.Cxd6 1-0

(1549) Seirawan – Rawikumar

Schien, 1979

1.Txe7 Dxe7 2.Dxh6+ Rxh6 3.Cf5+ Rg5 4.Cxe7 1-0

(1550) Szoelloesi –**Boguszlawski**

Ungarn, 1981

1.Dxb6 Txa1 2.Txa1 Dxb6 3.Ta8+ Tf8 4.Txf8+ Rxf8 5.Cd7+ Re7 6.Cxb6 1-0

(1551) Podrajanskaja –**Nyberg**

Bad Kissingen, 1982

1...Axc8 2.Txg6+ Rc7 [2...Rb7? 3.Tb6+] 3.Tg7+ Rb8 4.Rxc2 h2 5.Ad6+ [5.Th7 Af5+ 6.Rd2 Axh7] 5...Ra8 6.Tg8 h1D 7.Txc8+ Rb7 0-1

(1552) Christiansen – Heim

Oslo, 1981

1.Cb5 Ad6 2.Txd6 axb5 3.Txd8+ Txd8 4.Ae5 1-0

(1553) Okladnikow – Gurow

Nowosibirsk, 1981

1.Aa4 Ae7 [1...Axa4 2.Td8+ Dxd8 3.Axd8 g5 4.Dg3 Rxd8 (4...Td7 5.Ab6 Ad6 6.De3 Axc2 7.Axc5) 5.Db8+] 2.Txd7 [2.Axe7!? 2...g5 3.Txd7 Txd7 4.Dh5 Rxe7 5.Axd7+] 2...Txd7 3.Td1 1-0

(1554) Arboscelli – Pernici

Mailand, 1979

1.Dxf6+ Txf6 2.Txd8+ Rg7 3.Ah6+ Rxh6 4.Txe1 1-0

(1555) Gutman – Rantanen

Randers, 1982

1...Txa7 2.Dxd8 Txa6 3.De7 Txa1+ 0-1

(1556) Schmidt – Meissner

Dresden, 1981

1.Ce4 De5 2.Af4 Dxf5 [2...Dxf4 3.Cxf6+] 3.Cxf6+ Dxf6 4.Axh7+ Rg7 5.Tg3+ 1-0

(1557) Gstrein – Peierl

Lienz, 1980

1.Tc7 [1.Tch1! 1...Rf8 2.Th8+ Tg8 3.Ce5] 1...Dxc7 2.De8+ Tf8 3.Th8+ Rxh8 4.Dxf8+ Tg8 5.Dh6+ Dh7 6.Dxh7# 1-0

(1558) Tichatschke – Groschup

Dresden, 1980

1.Txe7+ Rxe7 2.Cg6+ Re8 [2...fxg6 3.Dxg7+ Rd6 4.Td1+] 3.Dxg7 1-0

(1559) Anikajew – Westerinen

Moskau, 1982

1.Cb6 Txh2+ 2.Rg1 [2.Rxh2? Axc3+ 3.Rg1 Axf2+ 4.Rxf2 Df4+ 5.Df3 Td2+ 6.Te2 Ce4+ 7.Rg2 Txe2+ 8.Dxe2 Dxc1] 2...axb6 3.Dxb6+ Ra8 4.Ta1+ 1-0

(1560) Psachis – Gawrikow

Jerewan, 1982

1.Txh6 Cg6 [1...Axh6 2.Cf6+ Rg7 3.Dh7+ Rxf6 4.Cc4#] 2.Th5 1-0

(1561) Zechkowski – Aksamow

Frunse, 1981

1...Cxb2 2.Ae3 [2.Axb2 Td2; 2.Df3 Dxf3+ 3.Cxf3 Cd3] 2...Cd1 3.e6 Td2 0-1

(1562) Laird – Birnboim

Lugano, 1981

1...Tg1+ 2.Rh2 [2.Rxg1 Axf2+ 3.Rxf2
Dxd3] 2...Txg3 3.fxg3 [3.Rxg3 Ae5+]
3...Ag1+ 4.Rxg1 Dxd3 0-1

(1563) Gutman – Feustel

Randers, 1982

1.f7+ Rg7 2.Th7+ Rxg6 3.f8C+ Rg5
4.Txd7 1-0

(1564) Agsamow – Sweschnikow

Partievariante, 1981

1.f4+ Rxf4 2.Th4+ Rg5 3.Ta4 f5 4.a6
Te8 5.a7 Ta8 6.Rxg3 1-0

(1565) Moonen – Wind

Holland, 1982

1.Ce4 Db6 [1...dxe4 2.Af7+ Rd8
3.Axg8; 1...fxe4 2.Df7+ Rd8 3.Dxf8+
Txf8 4.Txf8#] 2.Cxg4 Txg4 3.Aa4+
Rd8 [3...c6 4.Cf6+] 4.Dxg4 dxe4
5.Dxe4 Db4 6.Txf5 1-0

(1566) Graf – Matthis

Fernpartie, 1981

1...Cxf3 2.gxf3 De1+ 3.Dxe1 Axf3# 0-1

(1567) Akesson – Runneby

Schweden, 1982

1.Txd7 Txd7 2.Axf6+ Dxf6 3.De8+
Rg7 4.Ch5+ 1-0

(1568) Quinteros – Andersson

Partievariante, 1981

1.Rh6 [1.axb4? cxb4 2.Rh6 a3 3.e7 (3.
bxa3 bxa3 4.e7 Rxe7 5.Rg7 a2 6.f6+
Re6 7.f7 a1D+) 3...Rxc7 4.Rg7 axb2
5.f6+ Rd7 6.f7 b1D 7.f8D Dg1+ 8.Rh6
De3+ 9.Rg6 De8+] 1...bxa3 2.bxa3 c4
3.e7 Rxe7 4.Rg7 c3 5.f6+ Re6 6.f7 ½-½

(1569) Kiviharju – Ehrnrooth

Finnland, 1982

1...b5 2.axb5 [2.Axb5 Rxb3] 2...f3+ [2...
a4? 3.Rf3 a3 4.b6 a2 5.b7 a1D
6.b8D+=] 3.Rxf3 a4 4.Ad3 Rxb3 [4...
a3-+] 0-1

(1570) Alenius – Holopainen

Helsinki, 1982

1...d5 2.cxd5 [2.cxd5 Af7 3.Te1 Ag6+]
2...Ac8 0-1

(1571) Kimmelfeld – Ulaschuk

Taschkent, 1976

1...Dxh3+ 2.gxh3 Txh3+ 3.Rg2 Cf4+
4.Rf1 Th1# 0-1

(1572) Falk – Ostojic

Wiesbaden, 1981

1.Tg8+ Rxg8 2.Dg4+ Rh7 3.Dg7+
Axg7 4.hxg7+ Rg6 5.g8D+ Rxf6 6.Tf3+
Re7 7.Txf7+ 1-0

(1573) Johelsson – Belawenez

Olympiade, 1979

1...T8xe6 2.dxe6 Df3 3.gxf3 Tg5+
4.Rh1 Axf3# 0-1

(1574) Tulin – Rjabow

Fernpartie, 1930

1.Cb5 Axb5 2.e8D+ Txe8 3.Txe8 Ad7
4.e8D Axc8 5.Txc8 1-0

(1575) Steinitz – Weiss

Wien, 1882

1.Txd4 cxd4 2.Aa3+ Ae7 3.Axe6 Axa3
4.Cg6# 1-0

(1576) Mufics – Gross

Tapolca, 1882

1.Dd8+ Rg7 2.Ch5+ gxh5 3.Dg5+ ½-½

(1577) Dolschenko – Sagoruyko

Fernpartie, 1973

1...Dxe4 2.Dxe4 Tf1+ 3.Rxf1 Cd2+
4.Re2 Cxe4 0-1

(1578) Abramovic – Westerinen

Moskau, 1982

1...Txc2 2.Dxc2 Dh5 3.h3 Dxh3+
4.gxh3 Ab7+ 0-1

(1579) Mueller – Pospisyl

Senftenberg, 1980

1.Dh6 De8 [1...gxh6 2.Cg6#] 2.Ac2 1-0

(1580) Ribli – Chandler

Surakarta, 1982

1.Txc6 Td8 2.Tc8 Txc8 3.Dxd5+ Rh8
4.Cf7+ Rg8 5.Ch6+ Rh8 6.Dg8+ Txg8
7.Cf7# 1-0

(1581) Christiansen – Radulow

Bali, 1982

1.Te7 Txe7 [1...Tf8 2.Txe5] 2.Txd8+
Rh7 3.Ae4+ f5 4.Txc8 Txc8 5.Axf5+
g6 6.Axc8 Tc7 7.Ae6 1-0

(1582) Gillefalk – Samuelson

Malmoe, 1982

1...Dxf3+ 2.Dxf3 Txe2+ 3.Rf1 Axf3 0-1

(1583) Aljechin – Anderson

Chicago, 1933

1.Tg8+ Txg8 [1...Rxh7 2.Dxf5+ Rxg8

3.Tg1+ Rh8 4.Df6+ Rh7 5.Dg7#]
2.Cxf7+ Rg7 3.Dg5+ Rxf7 4.Df6+ Re8
5.hxg8D# 1-0

(1584) Geller – Waganjan

Partievariante, 1982

1.Txd8 Cxf3+ 2.Dxf3 Axf3 3.Txe8+
Txe8 4.gxf3 1-0

(1585) Andersson – Mestel

Partievariante, 1982

1...Td2 2.Txd2 Dxe1+ 3.Rh2 Ae5+ 0-1

(1586) Swinarjow – Jakobjan

Zchakaja, 1982

1.dxe5 Axc5 2.Cxc6 Dxc6 3.Dh5 gxh5
4.Axh7# 1-0

(1587) Monostori – Heinrich

Fernpartie, 1981

1.Cxe5 Cxe5 [1...Axe2 2.Af7+ Rf8
3.Ah6#] 2.Dxh5+ Rd7 3.Df5+ 1-0

(1588) Goldstein – Meschkow

Smolensk, 1982

2...Tf3 3.Tg2 Txh3+ 4.Rxh3 Dh1+
5.Th2 [5.Rg4 Cf6+ 6.Rf4 Cxe4]
5...Dxe4 0-1

(1589) Tuominen – Tanner

Helsinki, 1981

1.Cxd5 Txc6 2.Tb8+ Rg7 3.Tg8+ Rxg8
4.Ce7+ Rf8 5.Cxc6 Re8 6.a6 Rd7 7.a7
Axa7 8.Cxa7 1-0

(1590) Lampinen – Tuominen

Partievariante, 1977

1...Th1+ 2.Rxh1 e1D+ 3.Rh2 Dg3+ 0-1

(1591) Hansch – Belling

Stendal, 1982

1.Txd7 Txc3 2.Txc3 Db8 3.Tb7 Dxb7
4.Txc8+ 1-0

(1592) Blosze – Dietz

Fernpartie, 1982

1.Te7 Dxe7 [1...gxf5 2.Dxf5; 1...Axe7
2.Cxh6+] 2.Cxe7+ Axe7 3.h5 1-0

(1593) Keller – Gruenfeld

Luzern, 1982

1.Txb6+ axb6 2.Txb6+ Ra8 [2...Ra7
3.Tc6+ Rb8 4.Txc7] 3.De4+ Ra7 4.Tb5
De6 5.Da4+ Da6 6.Ta5 1-0

(1594) Klowski – Agsamow

Jerewan, 1982

1.Dxg5+ hxg5 2.Txh8 Rf7 3.T1h7+
Dg7 4.Txg7+ Rxg7 5.Txb8 1-0

(1595) Burmakin – Portnjagin

Abakau, 1981

1...Cxe5+ 2.fxe5 Td2+ 3.Axd2 Dxd2#
0-1**(1596) Pritzker – Bolschunow**

Winniza, 1982

1...h5+ 2.Rxh5 Txe2 3.Txe2 Cg3+
4.Rxg5 Cxe2 0-1**(1597) Pihajlicova – Klimova**

Decin, 1982

1...g3 2.hxg3 h3 3.Ag1 Ac5 4.Ah2
Axb6 0-1**(1598) Sterenberg –****Semjonowa**

Bad Kissingen, 1982

1...Af8 2.Rd5 Ag7 3.Re6 Ah8 4.Re7
Rg7 5.Re6 Rh6 0-1**(1599) Maekinen – Terko**

Finnland, 1982

1...Dxg2+ 2.Rxg2 Tg8+ 3.Rf3 Ad5+
4.Ce4 Axc4# 0-1**(1600) Miles – Portisch**

Luzern, 1982

**1...Dg6+ 2.Rh1 Tc2 3.De5 [3.Tg1
Dxg1+ 4.Rxg1 Axf2+ 5.Rf1 Txb2=]
3...Txf2 4.Db8+ Rxg7 5.Tg1 Txb2+
6.Dxh2 Dxg1+ 7.Dxg1+ Axc4# 0-1****LEGENDA:****INTESTAZIONE il Nero Muove***Edited by Michele Deiana*