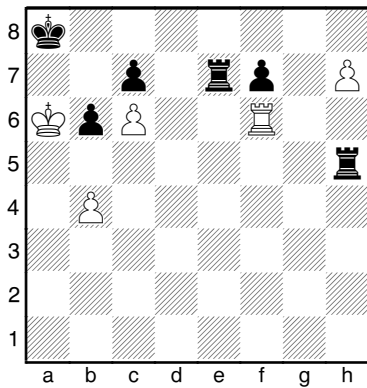
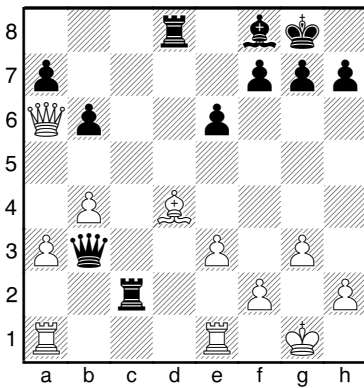


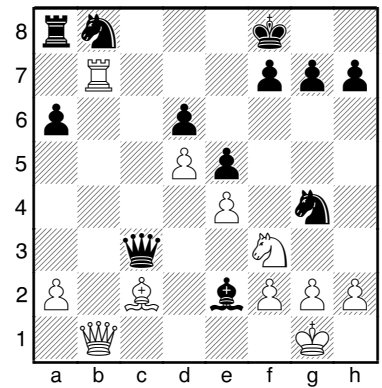
**(1301) Marshall – MacClure**  
New York, 1923



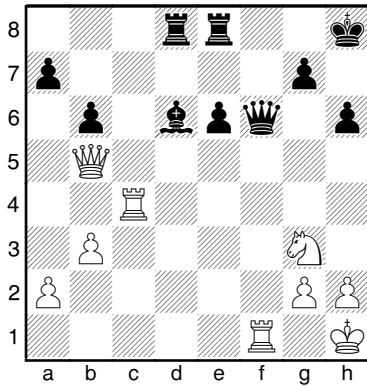
**(1304) Nimzowitsch – Capablanca**  
New York, 1927



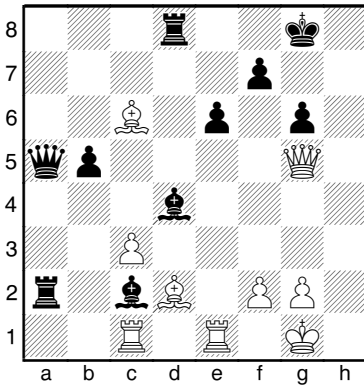
**(1307) Keres – Raud**  
Paenu, 1937



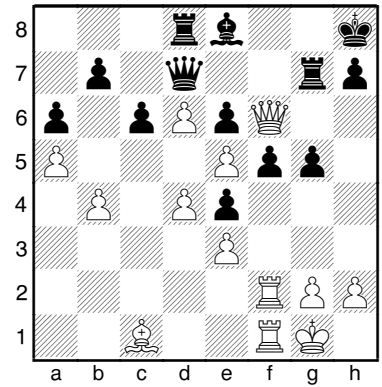
**(1302) N.N. – N.N.**



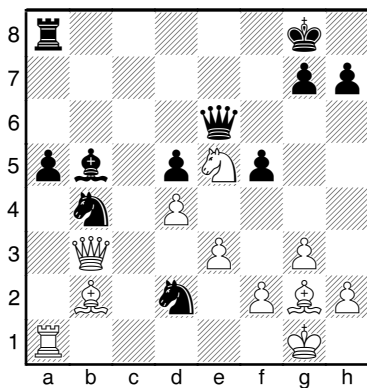
**(1305) Larsen – Kortschnoi**  
Palma de Mallorca, 1968



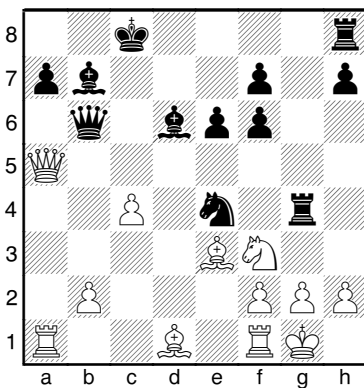
**(1308) Englund – Perfiljev**  
1926



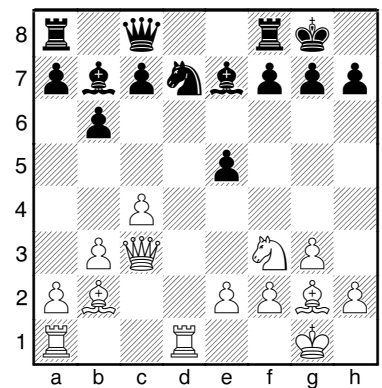
**(1303) N.N. – N.N.**



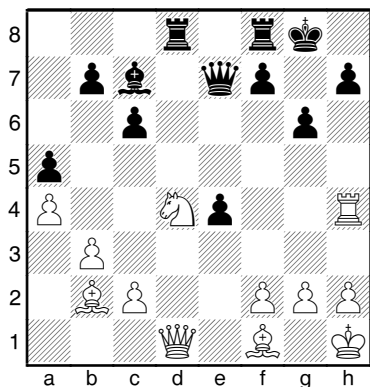
**(1306) Boleslawski – Ufimzew**  
Omsk, 1944



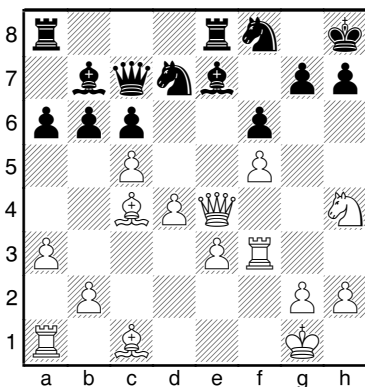
**(1309) N.N. – N.N.**



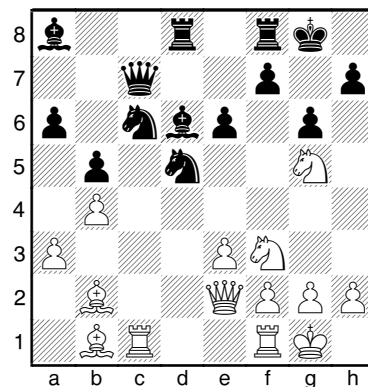
(1310) N.N. – N.N.



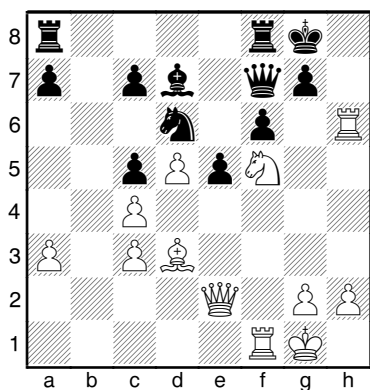
(1313) N.N. – N.N.



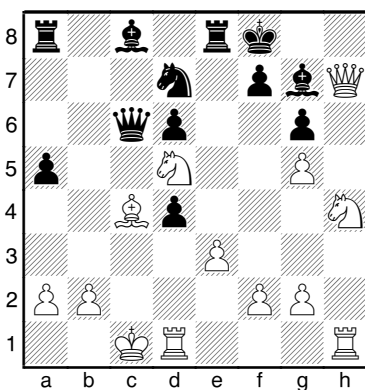
(1316) Marshall – Wolf  
1966



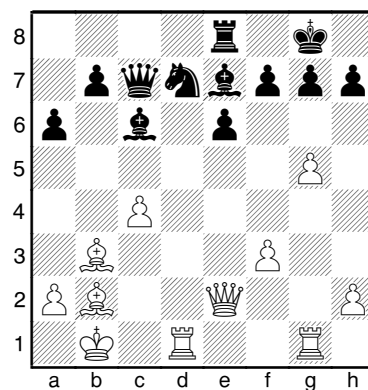
(1311) N.N. – N.N.



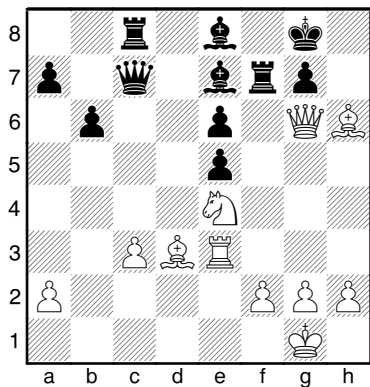
(1314) Sjorstrom – Bergmann  
1950



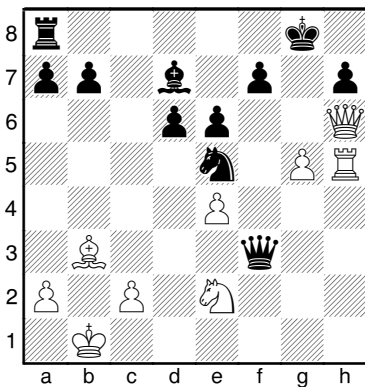
(1317) Ostojic – Sofrevski  
Skopje, 1969



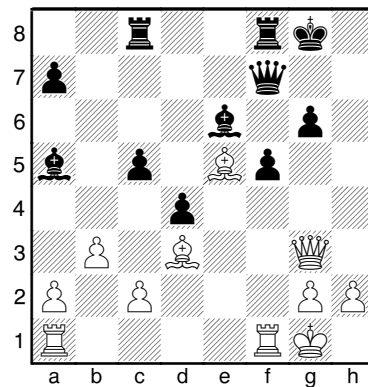
(1312) Engels – Beratende  
1943



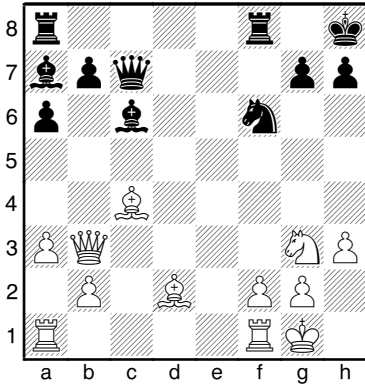
(1315) Karpow – Gik  
Moskau, 1969



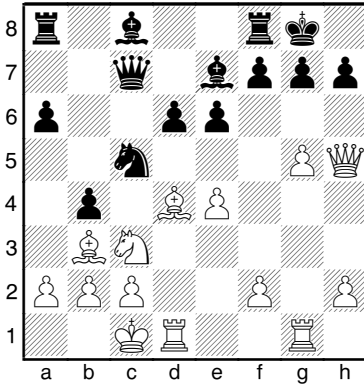
(1318) N.N. – N.N.



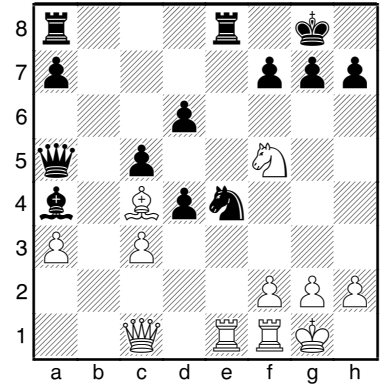
(1319) Saigin – Vistaneckis  
1969



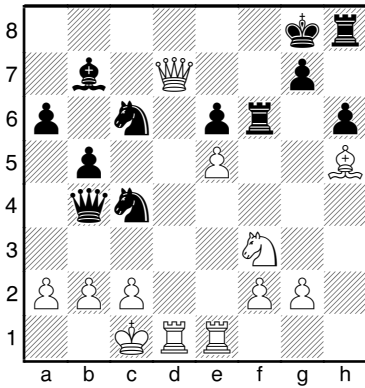
(1322) Hennings – Moehring  
Colditz, 1969



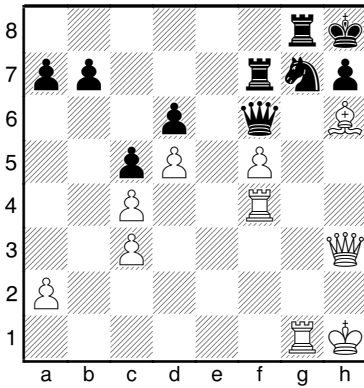
(1325) N.N. – N.N.



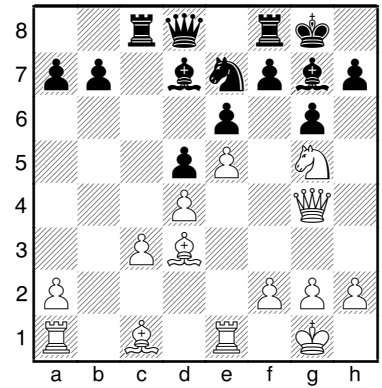
(1320) Goban – Schmidt  
Budq, 1950



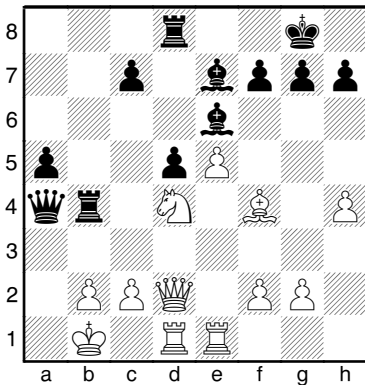
(1323) N.N. – N.N.



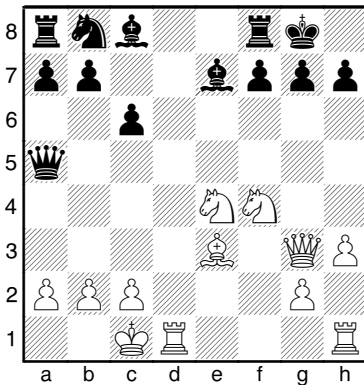
(1326) Barendregt – Szilagyi  
Amsterdam, 1966



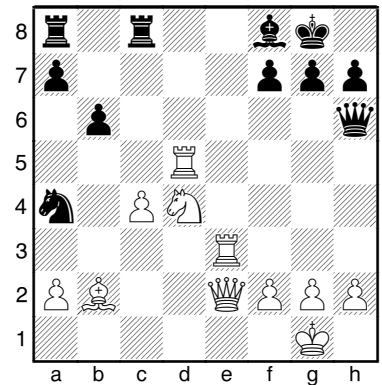
(1321) N.N. – N.N.



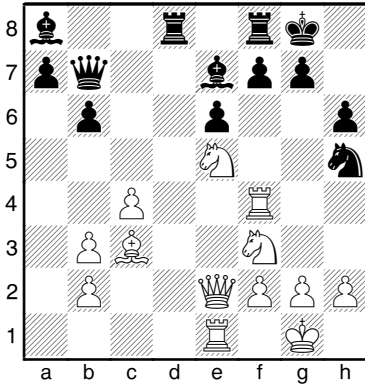
(1324) Mabs – Alexander  
London, 1961



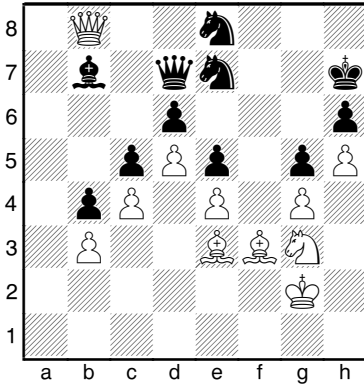
(1327) Spasski – Langeweg  
Sotschi, 1966



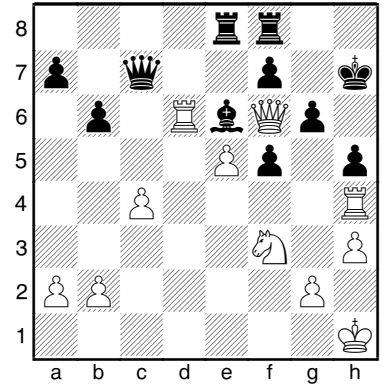
**(1328) Kopylow – Timofejew**  
Fernpartie, 1969



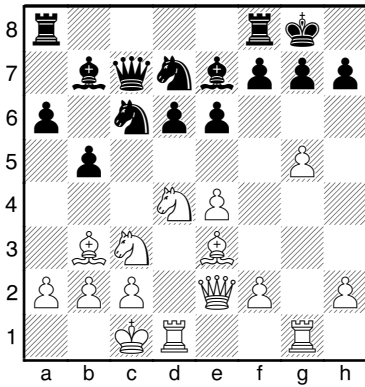
**(1331) Spasski – Penrose**  
Palma de Mallorca, 1969



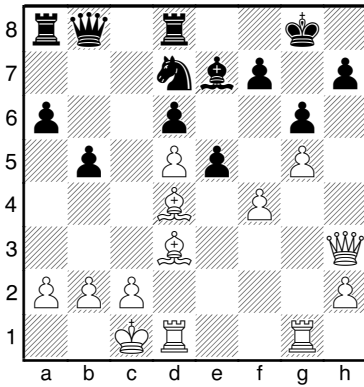
**(1334) N.N. – N.N.**



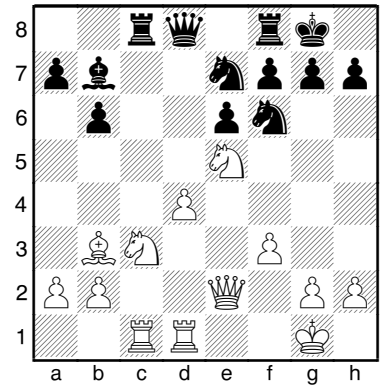
**(1329) Gontscharow – Strasduns**  
1969



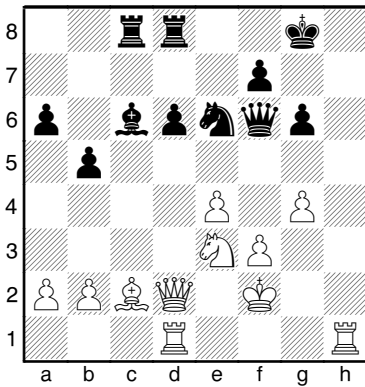
**(1332) Suetin – Jimenez**  
Havanna, 1969



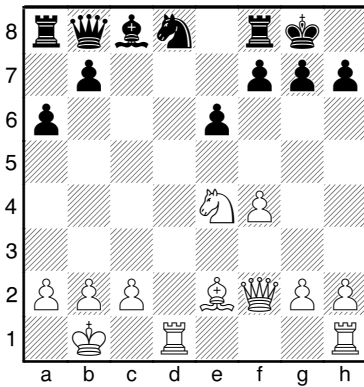
**(1335) Botwinnik – Batujew**  
Leningrad, 1931



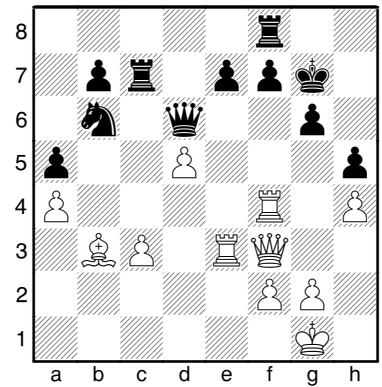
**(1330) Ree – Stein**  
Partievariante, 1969



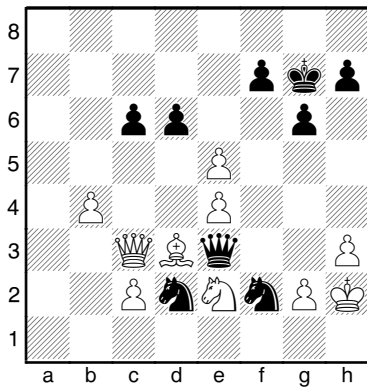
**(1333) Kupreitschik – Babev**  
Dresden, 1969



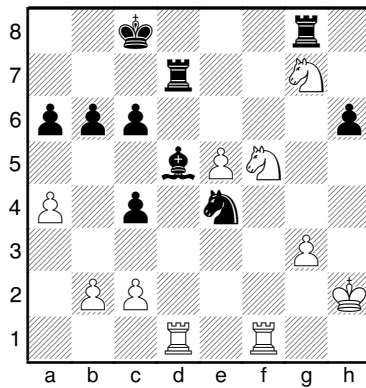
**(1336) Smyslow – Liberson**  
Moskau, 1969



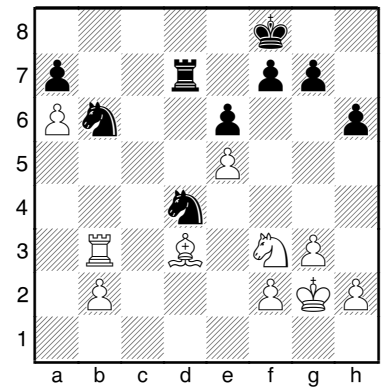
**(1337) Westerinen – Rasuwajew**  
Vilnius, 1969



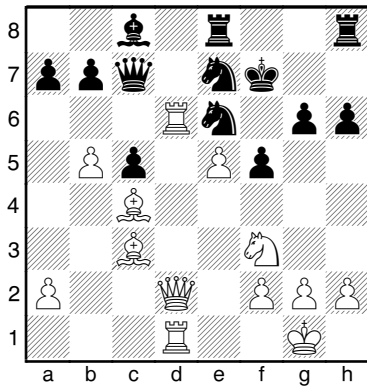
**(1340) Aljechin – Bogoljubow**  
1934



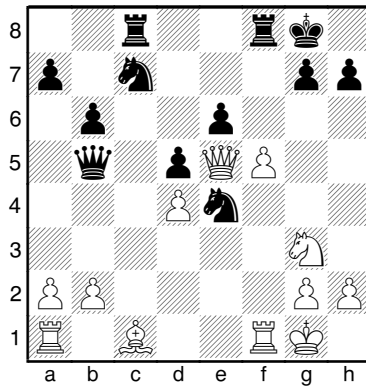
**(1343) Pirc – Duisburg**  
1935



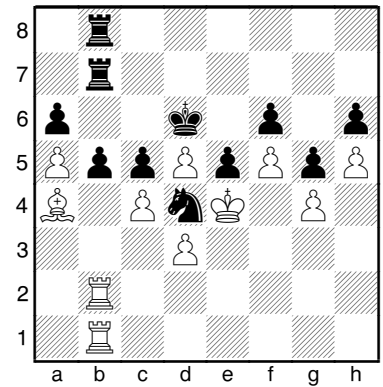
**(1338) Saizew – Osmolowski**  
Moskau, 1969



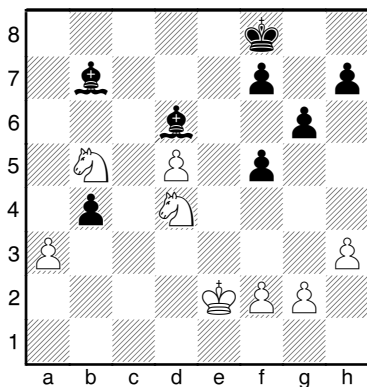
**(1341) Nicevski – Joffe**  
Partievariante, 1969



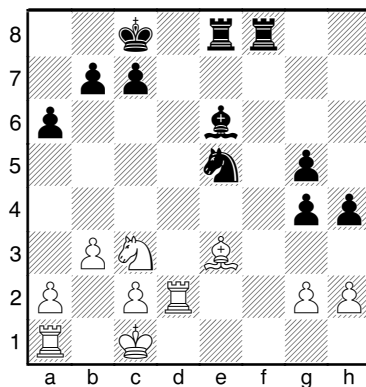
**(1344) Konoplewoi – Schmidtke**  
Partievariante, 1968



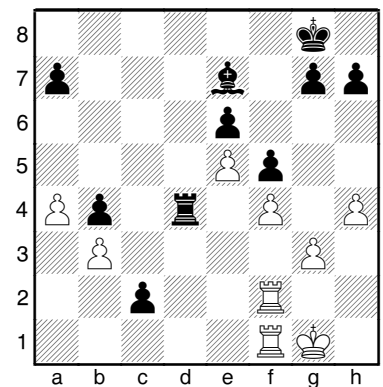
**(1339) Botwinnik – Flohr**  
1933



**(1342) Bird – Lasker**  
Partievariante, 1892

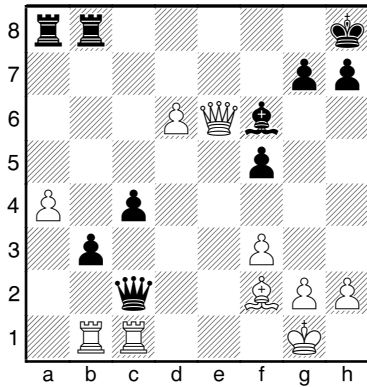


**(1345) Jurgis – Botwinnik**  
Leningrad, 1931



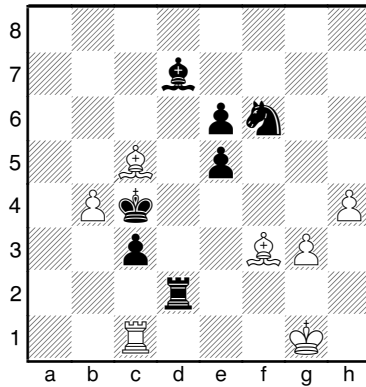
**(1346) Hort – Keres**

Partievariante, 1961



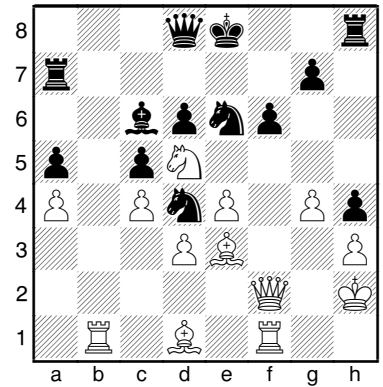
**(1349) Auerswald – Schneider**

Leutersdorf, 1989



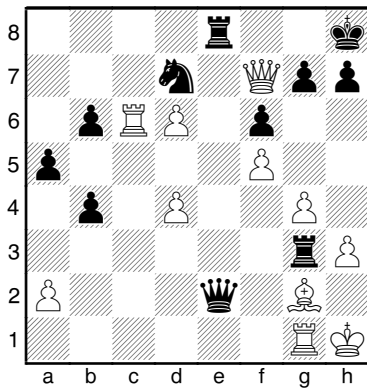
**(1352) Botwinnik – Keres**

UdSSR, 1966



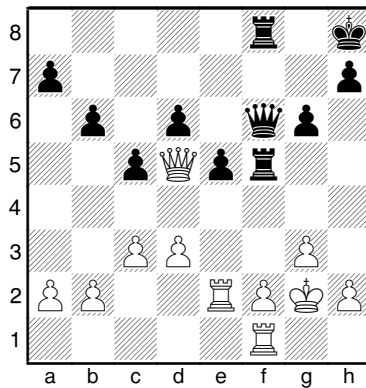
**(1347) Tomovic – Asztalos**

Belgrad, 1935

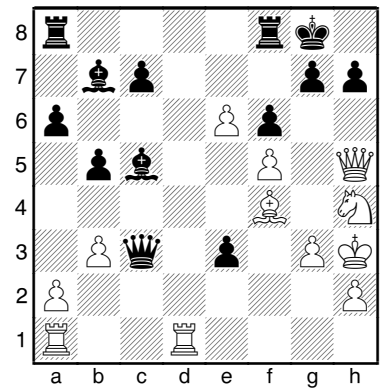


**(1350) Medina – Mecking**

Palma de Mallorca, 1969

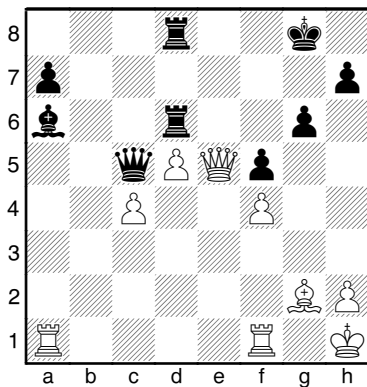


**(1353) N.N. – N.N.**



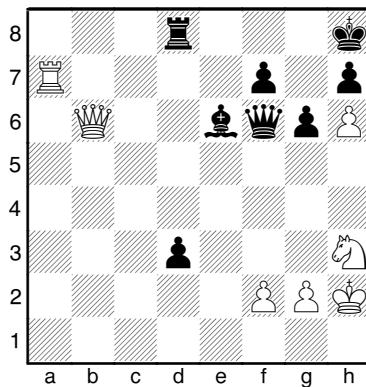
**(1348) Panow – Taimanow**

UdSSR, 1952



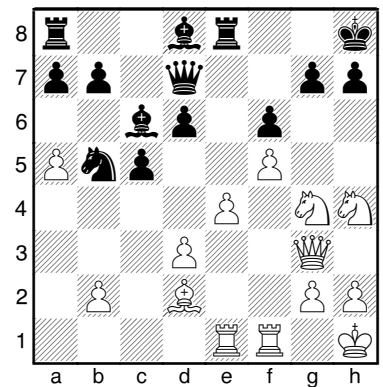
**(1351) Perez – Chalde de Silan**

1958

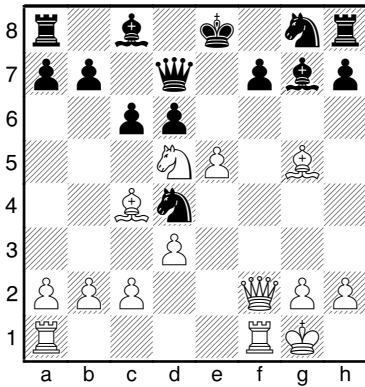


**(1354) Kłowski – Muratow**

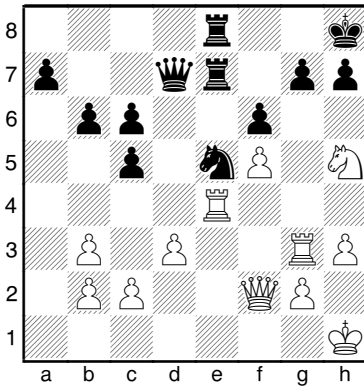
Moskau, 1967



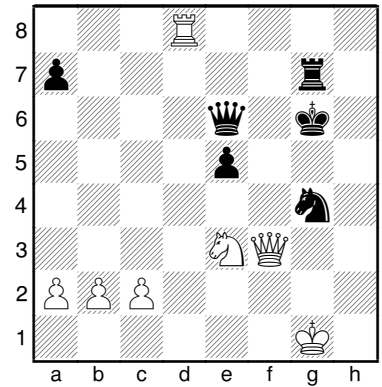
(1355) N.N. – N.N.



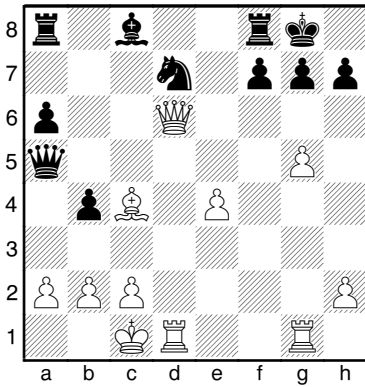
(1358) N.N. – N.N.



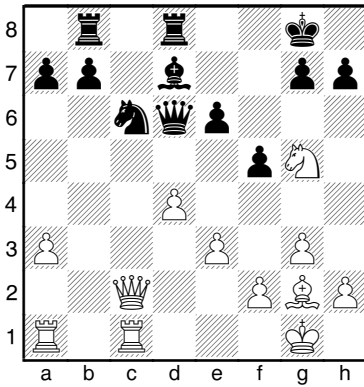
(1361) N.N. – N.N.



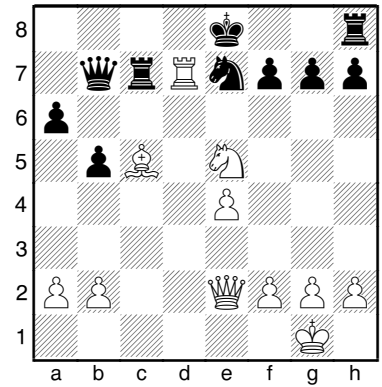
(1356) Schoeneberg – Tukmakow  
Partievariante, 1967



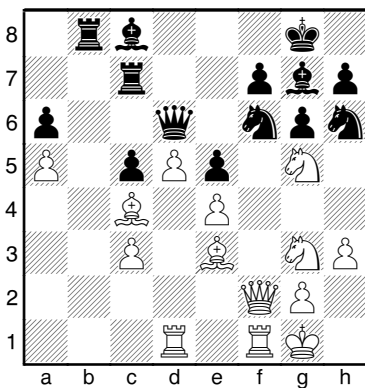
(1359) Aljechin – Golombek  
Margate, 1935



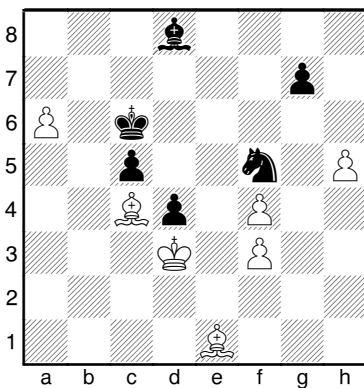
(1362) Boleslawski – Dshindsichaswili  
1969



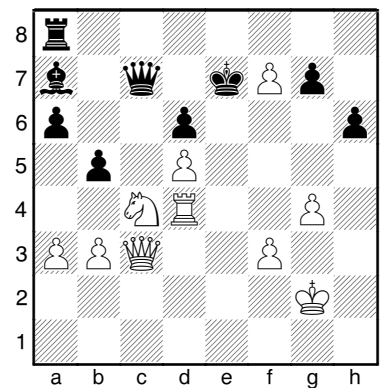
(1357) N.N. – N.N.



(1360) Reti - Aljechin

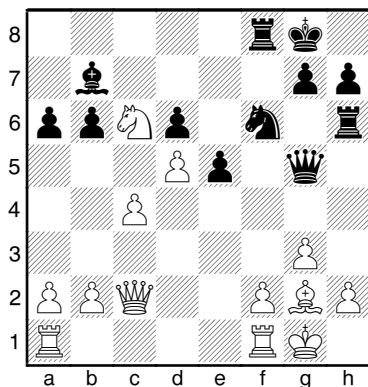


(1363) N.N. – N.N.

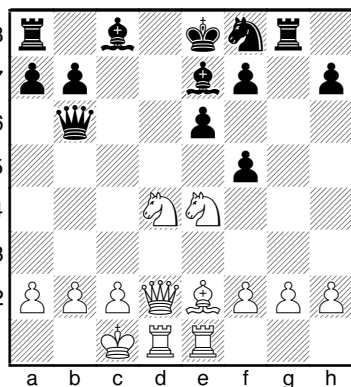


**(1364) Botwinnik – Kan**

Moskau, 1930

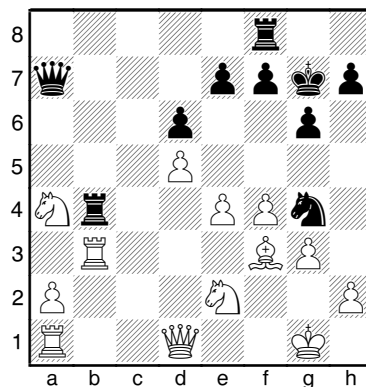


**(1367) N.N. – N.N.**

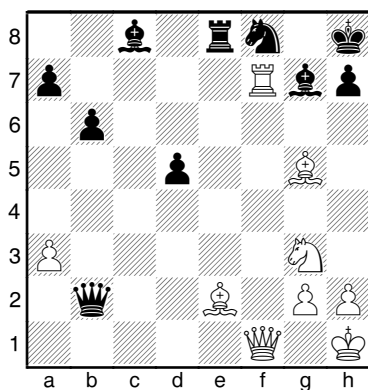


**(1370) Oren – Deiner**

1962

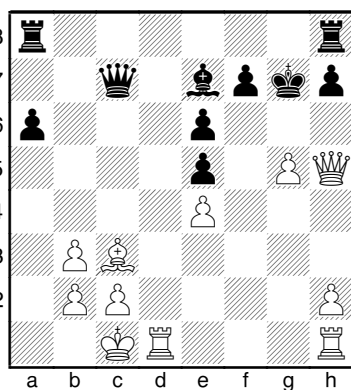


**(1365) N.N. – N.N.**

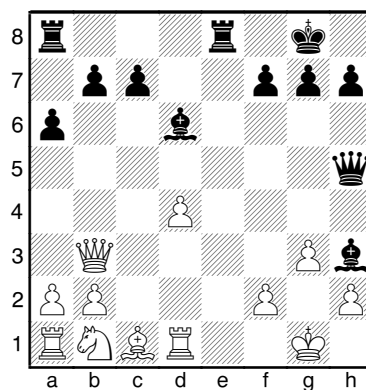


**(1368) Medina – Pomar**

Malaga, 1969

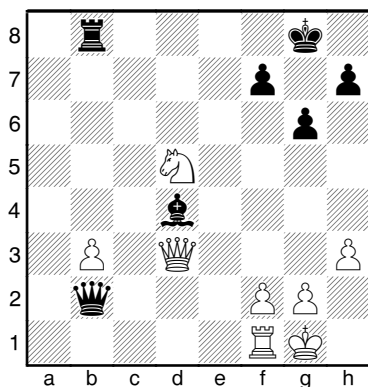


**(1371) N.N. – N.N.**

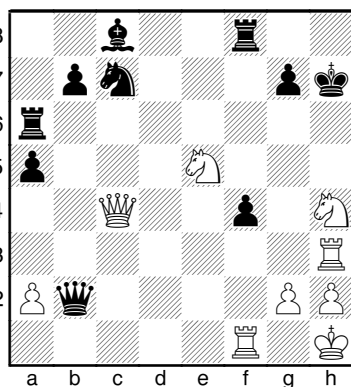


**(1366) Aljechin – Euwe**

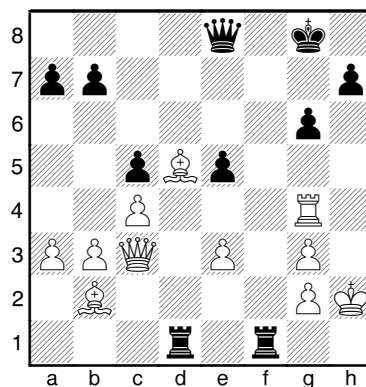
Partievariante, 1937



**(1369) N.N. – N.N.**



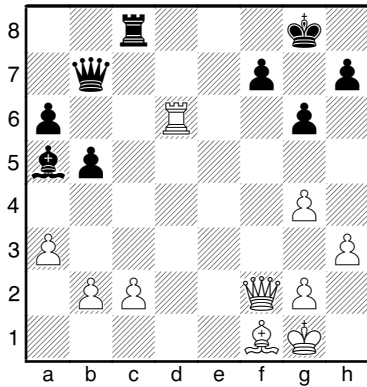
**(1372) N.N. – N.N.**





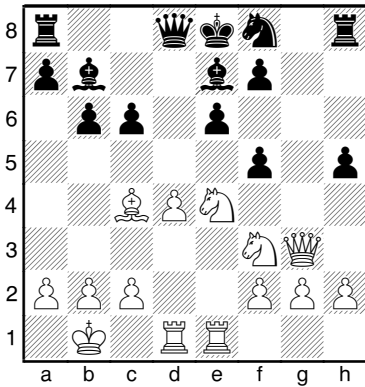
**(1373) Lasker – Ragozin**

Moskau, 1936

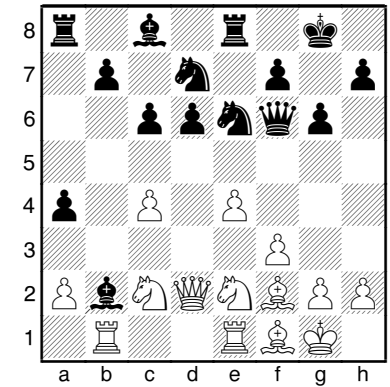


**(1376) Kotow – Kalmanok**

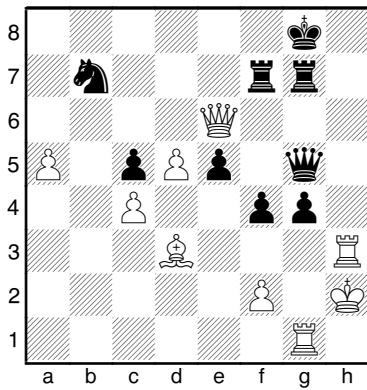
Moskau, 1936



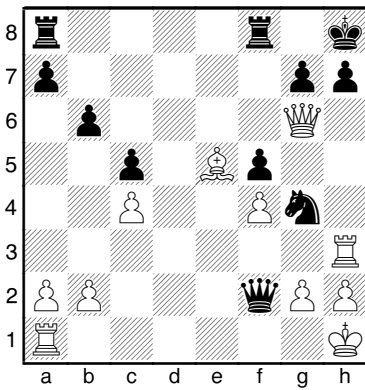
**(1379) N.N. – N.N.**



**(1374) N.N. – N.N.**

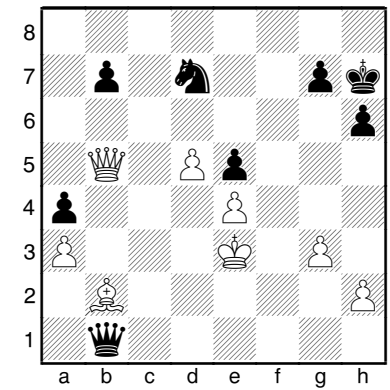


**(1377) N.N. – N.N.**



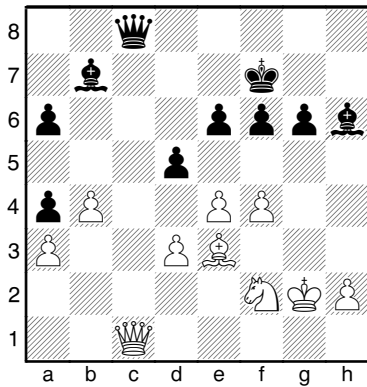
**(1380) Pirc – Lilienthal**

Particvariente, 1935

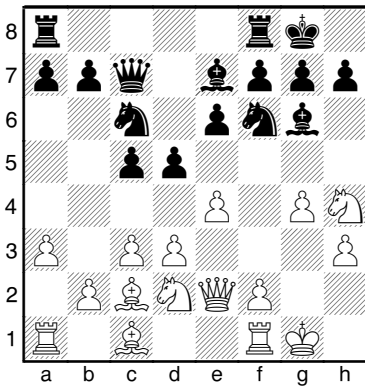


**(1375) Suetin – Kotow**

Riga, 1958

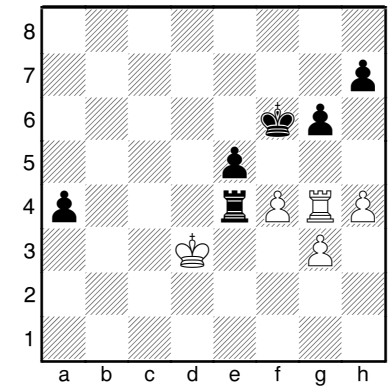


**(1378) N.N. – N.N.**

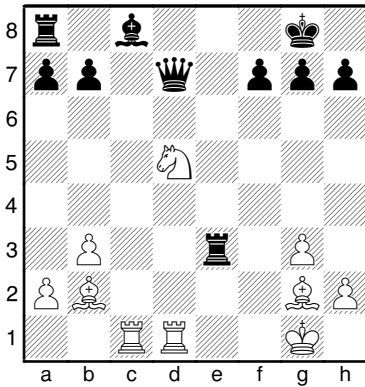


**(1381) Flohr – Geller**

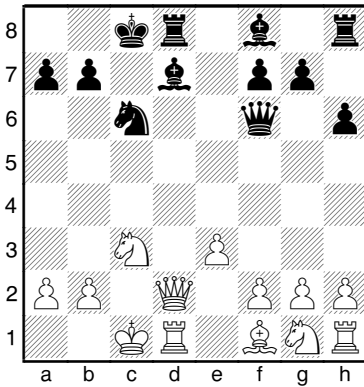
1949



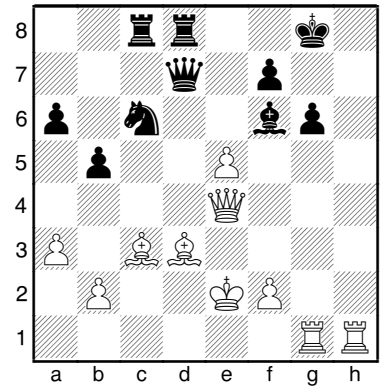
**(1382) Opocensky – Aljechin**  
1941



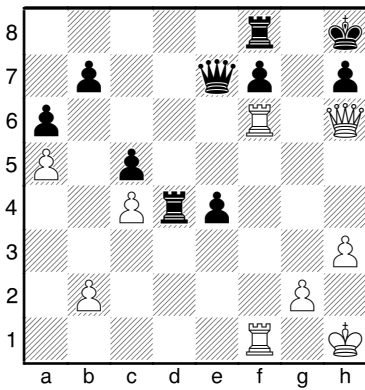
**(1385) Aljechin – Pirc**  
Bled, 1935



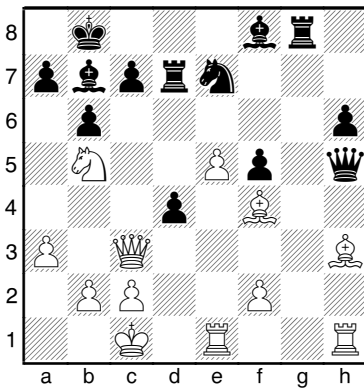
**(1388) Portisch – Eliskases**  
Olympiade, 1964



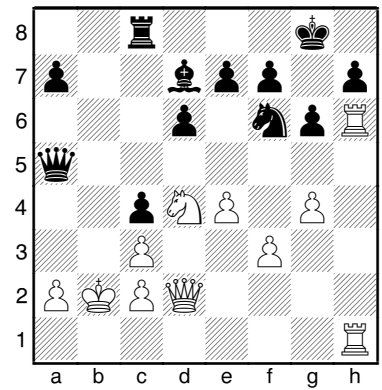
**(1383) Karassew – Kllaman**  
UdSSR, 1969



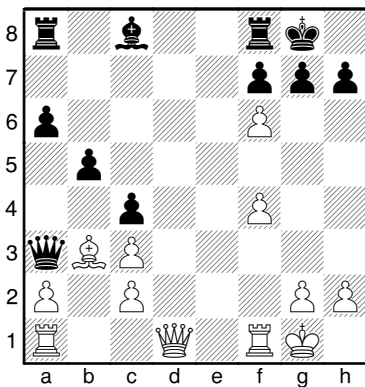
**(1386) Tal – Padewski**  
Moskau, 1963



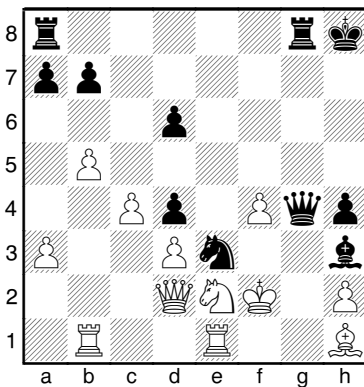
**(1389) Tal – Wade**  
Palma de Mallorca, 1966



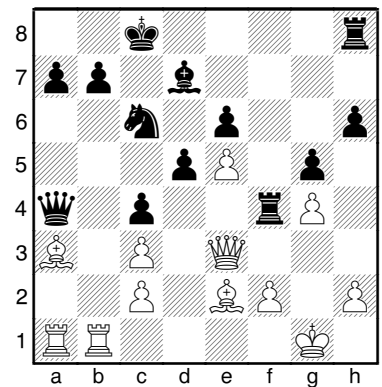
**(1384) Aljechin – Reti**  
Wien, 1922



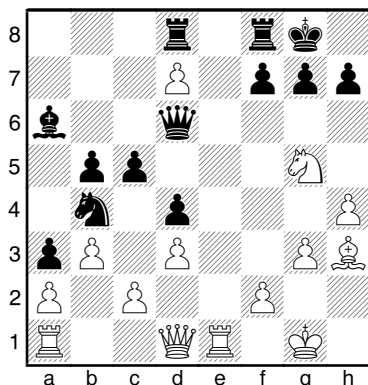
**(1387) Fernandez – Kavalek**  
Olympiade, 1964



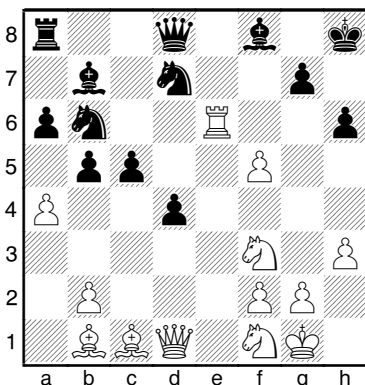
**(1390) Dueball – Jacoby**  
BRD, 1976



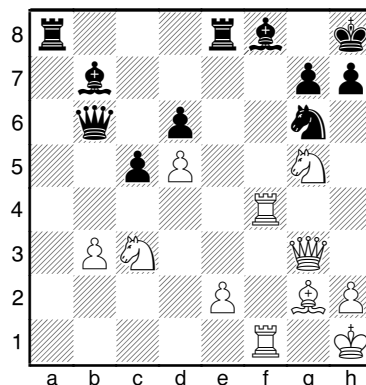
**(1391) Hennings – Zinn**  
DDR, 1973



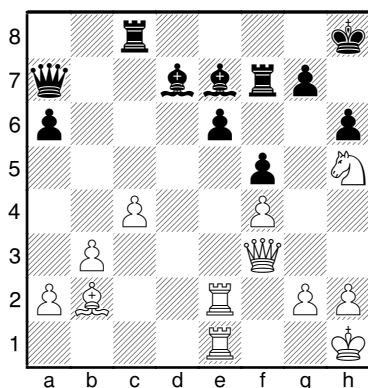
**(1394) Sokolow – Psachis**  
UdSSR, 1985



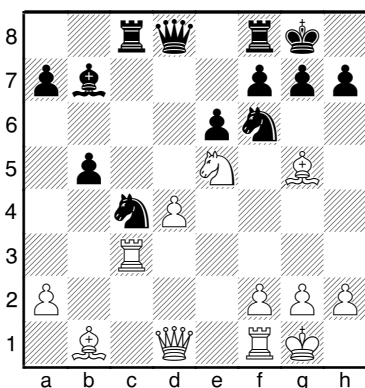
**(1397) Karpow – Salow**  
Linares, 1993



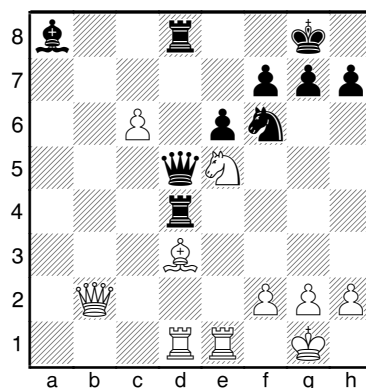
**(1392) Von Seggern – Rhode**  
Wuerzburg, 1985



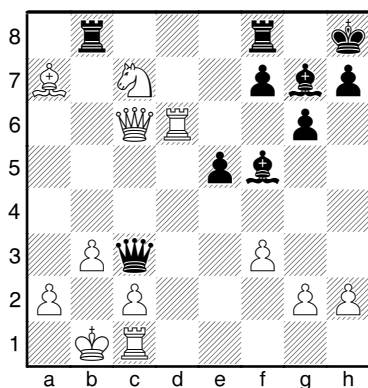
**(1395) Collier – Eberlein**  
USA, 1979



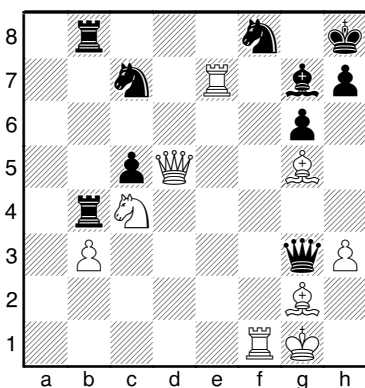
**(1398) Frolow – Drejew**  
Helsinki, 1992



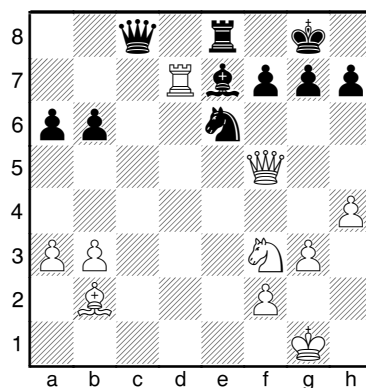
**(1393) Ernst – Petursson**  
Partievariante, 1981



**(1396) Prudnikowa – Paulauskiene**  
Debrecen, 1992

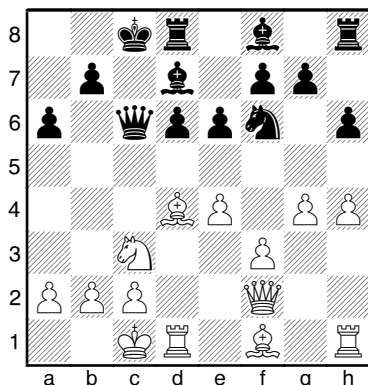


**(1399) Speelman – Greenfeld**  
Tilburg, 1992



**(1400) Sawkow – Luckans**

Riga, 1993

**(1301) Marshall – MacClure**

New York, 1923

**1.Th6 Txb6 2.h8D+ Txb8 3.b5** [ 3.b5 Td7 4.cxd7 c5 5.bxc6] ½-½

**(1302) N.N. – N.N.**

1...Axc3 2.Dxc8+ Rh7 0-1

**(1303) N.N. – N.N.**

1.Dxb4 axb4 2.Txa8+ Ae8 3.Axd5 Dxd5 4.Txe8# 1-0

**(1304) Nimzowitsch –****Capablanca**

New York, 1927

**2...e5 3.Axe5 Tdd2 4.Db7** [ 4.Tf1 Dxe3 5.fxe3 Tg2+ 6.Rh1 Txb2+ 7.Rg1 Tcg2#] **4...Txf2 5.g4 De6 6.Ag3 Txb2 7.Df3** [ 7.Axh2 Dxc4+ 8.Rh1 Dh3] **7...Thg2+ 8.Dxc2 Txc2+ 9.Rxc2 Dxc4 0-1**

**(1305) Larsen – Kortschnoi**

Palma de Mallorca, 1968

**1...Axf2+ 2.Rxf2 Txd2+ 3.Rg1** [ 3.Dxd2 Ae4 4.Axe4 Txd2+] **3...Dxc3 4.Dxb5 Dd4+ 5.Rh1 Dh4+ 6.Rg1 Ae4 7.Db8+ Rh7 8.Axe4 Txc2+ 9.Axc2 Df2+ 10.Rh2 Dxc2# 0-1**

**(1306) Boleslawski – Ufimzew**

Omsk, 1944

**1...Thg8 2.Ce1** [ 2.g3 Cxc3 3.hxc3 Axc3 4.Te1 Ac7+ ( 4...Dxa5) 5.Rf1 Dxa5 6.Txa5 Axa5; 2.Axb6 Txc2+ 3.Rh1 Txb2+ ( 3...Cxf2+ 4.Axf2 Txb2#) 4.Cxh2 Cxf2#] **2...Txc2+ 3.Cxc2 Cd2 0-1**

**(1307) Keres – Raud**

Paeruu, 1937

**1.Db6 Ce6** [ 1...g6 2.Dd8+ Rg7 3.Txf7+

Rxf7 4.Cg5+ Rg7 5.Ce6+ Rf7 6.Df8#; 1...Dc8 2.Tc7 De8 3.Db7 ( 3.Cg5 Ab5 4.Dxd6+ Rg8 5.Txf7 Ad7∞) 3...Cd7 4.Txd7 Axf3 5.gxf3 Cf6 6.Txf7+ Dxf7 7.Dxa8+] **2.Dc7 Ch6 3.Dxd6+** [ 3.dxc6] **3...Rg8 4.dxc6 Rh8 5.Tb8+ Txb8 6.Dxb8+ Cg8 7.c7 1-0**

**(1308) Englund – Perfiljev**

1926

1.d5 exd5 2.Txf5 exf5 3.e6 Dxd6 4.Ab2 Tdd7 5.exd7 Dxf6 6.dxe8D+ 1-0

**(1309) N.N. – N.N.**

1.Txd7 Dxd7 2.Cxe5 Dc8 3.Cc6 Af6 4.Ce7+ Rh8 5.Dxf6 gxf6 6.Axf6# 1-0

**(1310) N.N. – N.N.**

**1.Cf5 Dxb4 2.Dh5 gxb5** [ 2...Dxb5 3.Ce7#] **3.Ch6# 1-0**

**(1311) N.N. – N.N.**

1.Ce7+ Dxe7 2.Th8+ Rxh8 3.Dh5+ Rg8 4.Dh7+ Rf7 5.Ag6# 1-0

**(1312) Engels – Beratende**

1943

1.Dh7+ Rxh7 2.Cf6+ Rh8 3.Axc7+ Txc7 4.Th3+ 1-0

**(1313) N.N. – N.N.**

1.De6 Cxe6 2.Cg6+ hxc6 3.Th3+ Rg8 4.Axc6+ Rf8 5.Th8# 1-0

**(1314) Sjorstrom – Bergmann**

1950

1.Cxc6+ fxc6 2.Dg8+ Rxc8 3.Ce7+ Rf8 4.Cxc6# 1-0

**(1315) Karpow – Gik**

Moskau, 1969

**1.g6 Cxc6 2.Dxh7+ Rf8 3.Tf5 Dxb3+ 4.axb3** [ 4.cxb3] **4...exf5 5.Cf4 Td8 6.Dh6+ Re8 7.Cxc6 fxc6 8.Dxc6+ 1-0**

**(1316) Marshall – Wolf**

1966

**1.Cxh7 Rxh7 2.Cg5+ Rg8** [ 2...Rh6 3.Dg4 Axh2+ 4.Rh1] **3.Dh5 f6 4.Dxc6+ Dg7 5.Dxc7+ Rxc7 6.Cxe6+ 1-0**

**(1317) Ostojic – Sofrevski**

Skopje, 1969

**1.g6 hxc6 2.Txc6 Af6** [ 2...fxg6 3.Dxc6+ Rf8 4.c5] **3.Txd7 Axd7 4.Txf6 e5** [ 4...gxf6 5.Dg2+ ( 5.Axf6) 5...Rf8 6.Axf6] **5.Dg2 1-0**

**(1318) N.N. – N.N.**

**1.Txf5 Axf5 2.Dh4 Dd7** [ 2...Dh7 3.Ac4+ Tf7 4.Axf7+] **3.Ac4+ Ae6**

**4.Dh8+ Rf7 5.Tf1+ Re7 6.Dg7+ Tf7 7.Txf7+ Axf7 8.Dxf7+ Rd8 9.Df8+ De8 10.Dd6+ Dd7 11.Af6+ Re8 12.Ab5** [ 12.De5+ 12...Rf8 13.Ac7+ Re8 14.Ag5+] **12...Dxb5 13.De7# 1-0**

**(1319) Saigin – Vistanekis**

1969

1...Cg4 2.hxc4 Tf3 3.Cf5 Txb3 4.Axb3 Db6 0-1

**(1320) Goban – Schmidt**

Budq, 1950

**1.De8+ Rh7** [ 1...Df8 2.exf6] **2.Cg5+ hxc5 3.Ag6+ Txc6 4.Th1+ Th6 5.Txb6+ gxb6 6.Df7# 1-0**

**(1321) N.N. – N.N.**

1...Txb2+ 2.Rxb2 Tb8+ 3.Cb3 Da3+ 4.Rb1 Txb3+ 5.cxb3 Af5+ 0-1

**(1322) Hennings – Moehring**

Colditz, 1969

**1.Af6** [ 1.Dh6! 1...Cxb3+ 2.axb3 f6 3.gxf6] **1...Te8** [ 1...bxc3 2.Dh6] **2.Tg3 bxc3 3.Th3 cxb2+ 4.Rb1 Axf6** [ 4...h6 5.Dxh6 gxb6 6.Txb6 Axf6 7.gxf6] **5.gxf6 Rf8** [ 5...gxf6 6.e5 ( 6.Dh6! Cxe4 7.Tg1+ Cg5 8.Dxf6) 6...dxe5 7.Dh6 Ce4 8.Tg1+ Cg5 9.Txc5+ fxc5 10.Dxc5+] **6.e5 Ce4 7.fxc7+ Re7 8.Dh4+ 1-0**

**(1323) N.N. – N.N.**

1.Ag5 De5 2.Dxh7+ Rxh7 3.Th4+ Ch5 4.Txb5+ Rg7 5.Ae7+ 1-0

**(1324) Mabs – Alexander**

London, 1961

**1.Td5 cxd5 2.Ch5 g6 3.Chf6+** [ 3.De5! gxb5 4.Ah6 f6 5.Dxc7] **3...Axf6 4.Cxf6+ Rg7 5.De5 Rh8 6.Ah6** [ 6.Ch5+! f6 7.De7] **6...Cc6 7.Ag7+ Rxc7 8.Ce8+ Rh6 9.Df4+ g5 10.Df6+ Rh5 11.Cg7+ 1-0**

**(1325) N.N. – N.N.**

1.Txe4 Txe4 2.Dg5 g6 3.Df6 gxf5 4.Dxf7+ Rh8 5.Df6# 1-0

**(1326) Barendregt – Szilagyi**

Amsterdam, 1966

1.Cxh7 Rxh7 2.Dh4+ Rg8 3.Ag5 Te8 4.Te3 Txc3 5.Th3 Txd3 6.Dh7+ Rf8 7.Af6 Cf5 8.Dh8+ Axh8 9.Txb8# 1-0

**(1327) Spasski – Langeweg**

Sotschi, 1966

**1.Cf5 Dc6** [ 1...Df4 2.Axc7 Axc7 3.Ce7+ ( 3.Tg3? Cc3 4.Db2 Dxc4) 3...Rf8 4.Cxc8 Txc8 5.Dd1 Af6 6.Dxa4] **2.Axc7 Dxd5 3.Ch6+ Rxc7 4.Dg4+ 1-0**

**(1328) Kopylow – Timofejew**

Fernpartie, 1969

1.Txf7 Tx7 2.Cxf7 Rxf7 3.Dxe6+ Rf8  
4.Ch4 Cf4 5.Axg7+ Re8 [ 5...Rxc7  
6.Cf5+] 6.Dg4 1-0

**(1329) Gontscharow –****Strasduns**

1969

1.g6 hxc6 2.Cxe6 fxe6 3.Axe6+ Rh8 [ 3...Tf7 4.Cd5 Dd8 5.Txc6 Cce5 6.Txc7+ Rxc7 7.Tg1+ Rf8 8.Dh5 Re8 9.Tg7] 4.Txc6 Tf7 [ 4...Cf6 5.Txf6 Txf6 6.Dh5+] 5.Dh5+ Rg8 6.Txc7+ Rxc7 7.Tg1+ 1-0

**(1330) Ree – Stein**

Partievariante, 1969

1.Cf5 gxf5 2.gxf5 Ad7 [ 2...Cg7 3.Th6 De5 4.Tdh1] 3.Tdg1+ [ 3.fxe6 Axe6 4.Tdg1+ Rf8∞] 3...Cg7 4.Ab3 Rf8 5.Th6 De5 6.f6 1-0

**(1331) Spasski – Penrose**

Palma de Mallorca, 1969

1.Axc5 dxc5 2.Dxe5 Cg8 3.Db8 Cef6 4.Cf5 [ 4.e5!?] 4...Ce7 5.Cxh6 Cxd5 [ 5...Rxb6 6.Df8+ Rh7 7.Df7+ Rh8 8.Dxf6+] 6.cxd5 Rxb6 7.Df8+ Dg7 8.Dxc5 1-0

**(1332) Suetin – Jimenez**

Havanna, 1969

1.f5 exd4 2.fxc6 hxc6 3.Axc6 Cf8 [ 3...fxg6 4.De6+ Rg7 5.Dxc7+] 4.Axf7+ Rxf7 5.g6+ Rg7 6.Tdf1 Af6 7.Txf6 1-0

**(1333) Kupreitschik – Babev**

Dresden, 1969

1.Cf6+ gxf6 [ 1...Rh8 2.Dc5] 2.Dg3+ Rh8 3.Dh4 Rg7 4.Td3 Te8 5.Th3 h5 6.Axh5 [ 6.Dxh5? Dxf4] 6...Tg8 7.Tg3+ [ 7.Td1!] 7...Rf8 8.Dxf6 Txc3 9.Dxd8+ Rg7 10.hxc3 1-0

**(1334) N.N. – N.N.**

1.Txh5+ gxh5 2.Cg5+ Rg8 3.Dh6 f6 4.Cxe6 Dh7 5.Dxh7+ Rxh7 6.Cxf8+ Txf8 7.Txf6 Txf6 1-0

**(1335) Botwinnik – Batujew**

Leningrad, 1931

1.Cxf7 Txf7 2.Dxe6 Df8 [ 2...Ced5 3.Cxd5 Cxd5 4.Axd5 Axd5 5.Txc8] 3.Ce4 Txe1 4.Txe1 Cfd5 5.Cd6 Aa8 6.Te1 1-0

**(1336) Smyslow – Liberson**

Moskau, 1969

1.Te6 De5 2.Txc6+ fxg6 3.Txf8 Dxc3 4.Df7+ Rh6 5.Df4+ Rg7 6.Tf7+ Rg8

7.d6 Dxb3 8.Tf8+ Rg7 9.dxc7 1-0

**(1337) Westerinen –****Rasuwajew**

Vilnius, 1969

1...Cf1+ 2.Rg1 Cxh3+ 3.Rh1 Dg1+ 4.Cxg1 Cf2# 0-1

**(1338) Saizew – Osmolowski**

Moskau, 1969

1.Axe6+ Axe6 2.Txe6 Rxe6 3.Dxh6 Txb6 4.Cg5# 1-0

**(1339) Botwinnik – Flohr**

1933

1...bxa3 2.Cxd6 a2 3.Cc2 Aa6+ 4.Re3 Re7 5.Cxf7 Rxf7 6.Rd4 Af1 7.h4 Axg2 0-1

**(1340) Aljechin – Bogoljubow**

1934

1.e6 Tdxg7 2.Cxg7 Txc7 3.Txd5 cxd5 4.Tf8+ Rc7 5.Tf7+ 1-0

**(1341) Nicevski – Joffe**

Partievariante, 1969

1.Ah6 gxh6 [ 1...Dd7 2.fxc6 Cxe6 3.Cxe4 dxe4 4.Ae3] 2.fxe6 De8 3.e7 Txf1+ 4.Txf1 Dg6 5.Cxe4 dxe4 6.Tf6! [ 6.Tf8+? Txf8 7.Dh8+ Rxb8 8.exf8D+ Dg8 9.Df6+ Dg7 10.Dd8+ Dg8 11.Dxc7 Dxa2] 6...Dg5 7.Dxc7 De3+ 8.Tf2 Dcl1+ 9.Dxc1 Txc1+ 10.Tf1 Txf1+ 11.Rxf1 Rf7 12.Re2 Rxe7 13.Re3 1-0

**(1342) Bird – Lasker**

Partievariante, 1892

1...h3 2.Axg5 [ 2.gxh3 Cf3 3.Te2 gxh3] 2...g3 3.hxc3 [ 3.gxh3 Cf3] 3...Tf1+ [ 3...h2 4.Rb2 Cg4 5.Th1] 4.Rb2 Txa1 5.Rxa1 h2 6.Td1 Cg4 7.Th1 Ad7 8.Cd5 Te2 0-1

**(1343) Pirc – Duisburg**

1935

1.Txb6 axb6 2.Cxd4 Txd4 3.Ab5 Td1 [ 3...Td8 4.Ac6] 4.b3 Tc1 5.a7 Te8 6.Ac6 1-0

**(1344) Konoplewoi –****Schmidtke**

Partievariante, 1968

1...bxa4 2.Txb7 Txb7 3.Txb7 a3 4.Tb6+ Rd7 5.Tb7+ Rc8 6.Tb1 Ce2 7.d6 a2 8.Tc1 a1D [ 8...Rd7 9.Rd5 a1D 10.Txa1 Cxa1] 9.Txa1 Cxa1 10.Rd5 Rd7 11.Rxc5 Cb3+ 0-1

**(1345) Jurgis – Botwinnik**

Leningrad, 1931

1...Te4 2.bxc4 Ac5 3.Rg2 Axf2 4.Rxf2

b3 0-1

**(1346) Hort – Keres**

Partievariante, 1961

1...Dxc1+ 2.Txc1 b2 3.Tb1 c3 4.De2 [ 4.Dxf5 Txa4 5.Ae1 Ta1 6.Axc3 Axc3 7.Rf2 Td8 8.Re3 Txb1 9.Dxb1 Txd6] 4...Txa4 5.d7 Tg8 6.Ae1 Ta1 7.Dd1 Td8 8.Rf1 Txb1 9.Dxb1 Txd7 10.Dxf5 Td1 11.De8+ Td8 12.Df5 Tb8 0-1

**(1347) Tomovic – Asztalos**

Belgrad, 1935

1.De6 [ 1.Te2!? De3 2.Dxd7 Txb3+ 3.Axh3 Dxh3+ 4.Th2 Df3+] 1...Txe6 2.fxe6 h5 [ 2...Dxc6 3.Tc8+ Dg8 4.Txc8+ Rxc8 5.Ad5+] 3.exd7 Txc2 4.d8D+ Rh7 5.Txc2 Df1+ 6.Rh2 Df4+ 7.Rg1 1-0

**(1348) Panow – Taimanow**

UdSSR, 1952

1.Txa6 Txa6 2.d6 Dxe5 [ 2...Dxd6 3.Ad5+ Rf8 4.Dh8+] 3.fxe5 Ta5 4.Ad5+ Rf8 5.Tb1 1-0

**(1349) Auerswald – Schneider**

Leutersdorf, 1989

33...e4 34.Ad1 Rd3 35.Ae7 Cd5 36.Ag5 e3 37.h5 Cxb4! [ 37...c2? 38.Axc2+ Txc2 39.Txc2 Rxc2 40.Axe3=] 38.h6 Ac6 [ 38...c2? 39.Axc2+ Cxc2 40.h7] 39.h7 Tg2+ 40.Rf1 Th2 41.Ae2+ Rd2 42.Axe3+ [ 42.Td1+ Rc2 43.Axe3 Txb7] 42...Rxe3 43.Txc3+ Rd2 44.Tc4 Txb7 45.Txb4 Th1+ 46.Rf2 Th2+ 47.Rf1 Txe2 48.Tb2+ Rd1 49.Txe2 Ab5 50.Rf2 Axe2 0-1

**(1350) Medina – Mecking**

Palma de Mallorca, 1969

1...e4 2.Dc4 [ 2.Dxe4 Te5 3.Dg4 h5] 2...d5 3.Db5 e3 4.f4 d4 5.Tc1 g5 6.cxd4 gxf4 7.Rh1 fxg3 0-1

**(1351) Perez – Chalde de Silan**

1958

1.Txf7 De5+ [ 1...Dxf7 2.Dxd8+ Dg8 3.Df6+] 2.f4 Dd6 3.Db2+ Dd4 4.Tf8+ Ag8 5.Cg5 1-0

**(1352) Botwinnik – Keres**

UdSSR, 1966

1.g5 0-0 [ 1...fxg5 2.Axd4 cxd4 3.Df5] 2.g6 [ 2.Dxh4 Cxg5 3.Axg5 fxg5 4.Txf8+ Dxf8 5.Dxg5 Tb7±] 2...f5 3.Tb8 Dxb8 4.Dxh4 1-0

**(1353) N.N. – N.N.**

1.Td7 Dxa1 2.Txc7+ Rxc7 3.Ah6+ Rh8 4.Cg6+ hxc6 5.fxg6 Df1+ 6.Rh4 Df3

7.Ag7+ Rxc7 8.Dh7# 1-0

**(1354) Kłowski – Muratow**

Moskau, 1967

**1.Cg6+ hxc6 2.fxc6** [ 2.Dh4+] **2...Rg8 3.Dh4** [ 3.Dh3] **3...De6 4.Dh7+ Rf8 5.Ch6 Ac7 6.Ag5 d5 7.Axf6** [ 7.Txf6+ 7...gxf6 8.Cf5] **7...gxf6 8.g7+** [ 8.exd5+] **8...Re7 9.g8D+** [ 9.exd5+] **9...Rd6 10.Dg3+ 1-0**

**(1355) N.N. – N.N.**

**1.Ce7+ Dxc7 2.Axf7+ Rd7** [ 2...Rf8 3.Ag6+ Af5 4.Axf5] **3.Df5+ Cxf5 4.e6# 1-0**

**(1356) Schoeneberg – Tukmakow**

Partievariante, 1967

**1.g6 Dc5 2.gxf7+ Rh8 3.Dh6 De5 4.Td6** [ 4.Td3? Df6 5.Dxf6 Cxf6] **4...Cc5 5.Tdg6 1-0**

**(1357) N.N. – N.N.**

**1.Ce6 fxe6 2.dxe6 De7 3.Td8+ Ce8** [ 3...Dxd8 4.e7+] **4.Df7+ Cxf7 5.exf7+ Dxf7 6.Txe8+ Af8 7.Ah6 1-0**

**(1358) N.N. – N.N.**

**1.Txc7 Txc7 2.Cxf6 De7 3.Cxe8 Dxe8 4.Df4 Te7 5.f6 Cg6** [ 5...Te6 6.Txe5 Txe5 7.f7] **6.Txe7 Cxe7 7.f7 1-0**

**(1359) Aljechin – Golombek**

Margate, 1935

**1.d5 Ce7** [ 1...exd5 2.Axd5+ Dxd5 3.Td1] **2.dxe6 Axe6 3.Td1 De5 4.Axb7 h6 5.Cxe6 Dxe6 6.Dc7 1-0**

**(1360) Reti – Aljechin**

3.Ad5+ Rb6 4.Aa5+ Rxa6 5.Axd8 1-0

**(1361) N.N. – N.N.**

**1.Td6** [ 1.Dxc4+? Rf7] **1...Dxd6 2.Dxc4+ Rf7 3.Dxc7+ Rxc7 4.Cf5+ 1-0**

**(1362) Boleslawski – Dshindsichaschwili**

1969

**1.Td8+ Rxd8 2.Cxf7+ Rd7 3.Dg4+ Rc6 4.Dc6+ Rxc5 5.Dd6+ Rc4 6.Ce5# 1-0**

**(1363) N.N. – N.N.**

**1.Te4+** [ 1.Tf4! 1...Tf8 2.Dxc7] **1...Rf8 2.Te8+ Txe8 3.Dxc7+ Rxc7 4.fxe8C+ Rg6 5.Cxc7 1-0**

**(1364) Botwinnik – Kan**

Moskau, 1930

**1.Df5 Dh5** [ 1...Dxf5 2.Ce7+ Rh8 3.Cxf5 Tg6 4.Cxd6] **2.Dxh5 Cxh5 3.f4**

**exf4 4.g4 f3 5.gxh5 1-0**

**(1365) N.N. – N.N.**

**1.Txc7 Rxc7** [ 1...Dxc7 2.Af6] **2.Af6+ Dxf6 3.Ch5+ 1-0**

**(1366) Aljechin – Euwe**

Partievariante, 1937

**1.Ce7+ Rf8 2.Cc6 Axf2+ 3.Rh1** [ 3.Txf2 Dc1+ 4.Df1 Dxc6 5.Txf7+ Rg8∞; 3.Rh2 Te8 4.Df3 Te2 5.Cd4 Td2 6.Ce6+ Re7 7.Cf4 ( 7.Cg5 De5+) 7...Dd4 8.Rh1 Ah4±] **3...Te8 4.Df3 Te2 5.Cd4 Td2 6.Ce6+ Re7 7.Cf4** [ 7.Cg5 f5 8.Cxh7 Dc2 9.Db7+ Td7±] **7...Dd4** [ 7...Dc2 8.Cd5+ Re6 9.Ce3 Axe3 10.Dxe3+ Rd5 11.Df3+ Rc5 12.Dxf7; 7...f5 8.Cd3] **8.Ce2 Td1 9.Db7+ Rf8 10.Cxd4 Txf1+ 11.Rh2 Ag1+ 12.Rg3 1-0**

**(1367) N.N. – N.N.**

**1.Cxf5 exf5 2.Cf6+ Dxf6 3.Dd8+ Axd8 4.Ab5# 1-0**

**(1368) Medina – Pomar**

Malaga, 1969

**1.Td7 Dxd7 2.Dh6+ Rg8 3.Axe5 f6 4.gxf6 Ac5 5.Dg7+ Dxc7 6.fxc7 1-0**

**(1369) N.N. – N.N.**

**1.De6 Axe6** [ 1...Txe6 2.Chg6+ Rg8 3.Th8#] **2.Cf5+ Rg8 3.Ce7# 1-0**

**(1370) Oren – Deiner**

1962

**1.Cb6 Dxb6+ 2.Dd4+** [ 2.Cd4!] **2...Dxd4+ 3.Cxd4 Txd4 4.Axc4 1-0**

**(1371) N.N. – N.N.**

**1...Te3 2.Dc2** [ 2.fxc3 De2; 2.Axe3 Df3] **2...Af5 3.Da4 b5 0-1**

**(1372) N.N. – N.N.**

**1...Df7** [ 1...Rg7? 2.Dxe5+ Dxe5 3.Axe5+ Rh6 4.Th4+ Rg5 5.Af4+ Rf6 6.g4+] **2.Txc6+** [ 2.Axf7+ Rf8] **2...Rf8 3.g4 Dxc6 4.Dxe5 Dxc6= ½-½**

**(1373) Lasker – Ragozin**

Moskau, 1936

**1...Ac7 2.Tf6 Ad8 3.Td6** [ 3.Df3 Da7+ 4.Df2 Dxf2+ 5.Txf2 Ab6] **3...Ac7 4.Tb6 Dxb6 5.Dxb6 Ac5+ 6.Dxc5 Txe5 0-1**

**(1374) N.N. – N.N.**

**1.Txc4 Dxc4 2.De8+ Tf8 3.Th8+ Rxh8 4.Dxf8+ Tg8 5.Dh6# 1-0**

**(1375) Suetin – Kotow**

Riga, 1958

**1...Dxc1 2.Axc1 dxe4 3.dxe4 f5 4.Rf3 e5 5.Ae3 fxe4+** [ 5...exf4#] **6.Cxe4 exf4** [ 6...Re6 7.f5+ gxf5 8.Axh6 Axe4+ 9.Re2∞] **7.Axf4 g5 8.Ad2 Rg6 9.Re3 g4+ 10.Rd4 Ag7+ 11.Re3 Axe4 12.Rxe4 Ab2 13.Rd3 Rf5 0-1**

**(1376) Kotow – Kalmanok**

Moskau, 1936

**1.d5 exd5 2.Ab5+ Cd7 3.Ce5 Ac8 4.Dg7 Tf8 5.Txd5 exd5 6.Cf6+** [ 6.Cd6+! 6...Axd6 7.Cxd7+ De7 8.Dxf8#] **1-0**

**(1377) N.N. – N.N.**

**1...De1+ 2.Txe1 Cf2+ 3.Rg1 Cxh3+ 4.gxh3 hxc6 0-1**

**(1378) N.N. – N.N.**

**1...Cxc4 2.Dxc4 f5 3.exf5 exf5 4.Da4** [ 4.Dg3 f4 5.Dg4 ( 5.Dg2 Axh4 6.Dxd5+ Rh8 7.Dxc5 Dd7) 5...Ce5] **4...Ae8 5.Chf3** [ 5.Db3 c4 ( 5...Axh4 6.Dxd5+ Af7) 6.dxc4 Ca5 7.Da2 Axh4 8.cxd5] **5...Ca5 0-1**

**(1379) N.N. – N.N.**

**1.Txb2 Dxb2 2.Cc3 Ce5 3.Tb1 1-0**

**(1380) Pirc – Lilienthal**

Partievariante, 1935

**2...Cc5 3.Dc4 b5** [ 3...Dxb2 4.Dxc5 Dxb2 5.Rf3∞] **4.Dxb5 Dxe4+ 5.Rd2 Dxd5+ 6.Rc3 Ce4+ 7.Rb4 Dd2+ 8.Rxa4 Dc2+ 9.Ra5 Cd6 10.Db4 Cc4+ 11.Rb5 Cxb2 0-1**

**(1381) Flohr – Geller**

1949

**1...Rg7 2.Rc3** [ 2.Rxe4 a3] **2...a3** [ 2...h5 3.Tg5 exf4+] **3.Rb3 Ta4 4.Ra2 h6 5.h5 g5 6.Rb1 a2+ 0-1**

**(1382) Opocensky – Aljechin**

1941

**1...Te2 2.Cc7** [ 2.Cf6+ gxf6 3.Txd7 Axd7] **2...De7 3.Cxa8 Ah3 4.Td8+ Dxd8 5.Axh3 Dxa8 0-1**

**(1383) Karasew – Klaman**

UdSSR, 1969

**1.Te6 Dd8 2.Tg6 Tg8 3.Txf7 Td1+ 4.Rh2 Db8+ 5.g3 Td2+ 6.Rh1 Td1+ 7.Rg2 Td2+ 8.Rf1 1-0**

**(1384) Aljechin – Reti**

Wien, 1922

**4.Dd5 Da5 5.fxc7** [ 5.Dxa8 Db6+ 6.Tf2 Ab7] **5...Db6+ 6.Rh1 Rxc7 7.Axc4 Ab7**

[ 7...bxc4 8.Dxa8 Ab7 9.Tab1] **8.De5+ 1-0**

### (1385) Aljechin – Pirc

Bled, 1935

**2...Ag4 3.Cd5 Txd5 4.Dxd5 Aa3 5.Db3** [ 5.bxa3 Da1+ 6.Rc2 Axd1+ 7.Dxd1 Dxa2+ 8.Rc1 Td8; 5.Td2 Td8 6.Db3 Txd2 7.Rxd2 Dxf2+ 8.Ce2 Ab4+] **5...Axd1 6.Dxa3 Dxf2 7.Dd3 Ag4** [ 7...Td8? 8.Ch3#] **0-1**

### (1386) Tal – Padewski

Moskau, 1963

**11.e6 dxc3 12.exd7 Ag7 13.Cxc7 cxb2+ 14.Rb1 Axb1** [ 14...Df3 15.Cd5+ Ra8 16.Ag2 Dxc2 17.Cc7+ Rb8 18.Cc8+; 14...Ae4 15.Cc8+ ( 15.Txe4? Df3#) 15...Rb7 16.Axf5 Dxf5 17.Cd6+ Rc6 18.Cxf5 Cxf5 19.Txe4] **15.Ce8+ Rb7 16.d8D 1-0**

### (1387) Fernandez – Kavalek

Olympiade, 1964

**1...Dg2+** [ 1...Ag2-+2.Cxd4 Dxf4+] **2.Axg2 Txxg2+ 3.Rf3 Te8 4.f5 Ag4+ 5.Rf4 Tf2+ 6.Rg5 Tg8+ 7.Rf6 Txf5+ 8.Re7 Tg7+ 9.Rxd6 Tfg5** [ 9...Th5] **0-1**

### (1388) Portisch – Eliskases

Olympiade, 1964

**2.exf6** [ 2.e6 Cd4+ 3.Axd4 Dxd4 4.cxf7+ Rxf7 5.Dxc6+ Rf8 6.Dg8+ Re7 7.Th7+ Rd6 8.Dg3+ Rc5 9.Tc1+ Rb6 10.The7 Dxb2+ 11.T1c2 Txd3=] **2...Te8 3.Txxg6+ fxxg6 4.f7+ Rxf7 5.Th7+ Rf8 6.Txd7 Txe4+ 7.Axe4 1-0**

### (1389) Tal – Wade

Palma de Mallorca, 1966

**1.Txh7 Cxh7 2.Dh6 e6 3.f4** [ 3.Dxh7+! Rf8 4.f4 e5 5.g5+-] **3...e5** [ 3...Tb8+ 4.Rc1 Dxc3 5.Dxh7+ Rf8 6.Dh8+ Re7 7.Cf5+] **4.g5 Ae8 5.Ce6 fxe6 6.Dxh7+ Rf8 7.Dh8+ Re7 8.Th7+ 1-0**

### (1390) Dueball – Jacoby

BRD, 1976

**1.Ad6 Dxc2 2.Db6 Dxb1+** [ 2...axb6 3.Ta8+ Cb8 4.Txb8#] **3.Dxb1 1-0**

### (1391) Hennings – Zinn

DDR, 1973

**1.Te6** [ 1.Dh5? Dg6] **1...Dd5** [ 1...fxe6 2.Axe6+ Rh8 3.Dh5 h6 4.Dg6 hxg5 5.Dh5#] **2.Dh5 h6 3.Txh6 gxh6 4.Dxh6 1-0**

### (1392) Von Seggern – Rhode

Wuerzburg, 1985

**1.Cxg7 Txg7 2.Dh5 Rh7 3.Txe6 Axc6 4.Txe6 Rg8 5.Txh6 Rf8 6.Axg7+ 1-0**

### (1393) Ernst – Petursson

Partievariante, 1981

**1...Txb3+ 2.axb3 Dxb3+ 3.Ra1 e4+ 4.Td4 Da3+ 5.Rb1 Dxa7 6.Ta4 Tb8+** [ 6...Db8+ 7.Cb5-+] **7.Ra2 Tb2+ 8.Ra3 Db8 9.De8+ Af8+ 0-1**

### (1394) Sokolow – Psachis

UdSSR, 1985

**1.Cg5 Dc7** [ 1...hgx5 2.Dh5+ Rg8 3.f6 Cxf6 4.Txf6 d3 5.Df7+ Rh8 6.Axg5] **2.Cf7+ Rg8 3.Cxh6+ gxh6 4.Dg4+ Rh8 5.f6 Cd5** [ 5...Ce5 6.Txe5 Dxe5 7.Dg6 Ae4 8.Axe4 Ta7 9.f7 Dg7 10.Dxb6] **6.f7 C7f6 7.Dg6 1-0**

### (1395) Collier – Eberlein

USA, 1979

**1.Cd7** [ 1.Cg4? Dd5; 1.Axf6?! Dxf6 2.Cd7 De7 3.Cxf8 Dxf8 4.Dh5 f5+] **1...Dxd7 2.Axf6 Dd5** [ 2...g6 3.Dh5] **3.Tg3 g6 4.Tg5 Dd6 5.Dh5 1-0**

### (1396) Prudnikowa –

#### Paulauskiene

Debrecen, 1992

**1.Df7 Cce6** [ 1...Cfe6 2.Af6 Tg8 3.Axg7+ Txg7 4.Dxc7+ Cxc7 5.Tf8#] **2.Af6 Axf6 3.Dxf6+ Rg8 4.Tg7+ Cxg7 5.Df7+ Rh8 6.Dxf8+ Txf8 7.Txf8# 1-0**

### (1397) Karpow – Salow

Linares, 1993

**1.Cf7+ Rg8 2.Dxc6 hxg6 3.Th4 1-0**

### (1398) Frolow – Drejew

Helsinki, 1992

**1.Dxd4 Dxd4 2.c7 Rf8** [ 2...Db6 3.cxd8D+ Dxd8 4.Axh7+ Rxh7 5.Txd8; 2...Tc8] **3.Af1 1-0**

### (1399) Speelman – Greenfeld

Tilburg, 1992

**1.Cg5 Cxg5 2.Txe7 Cf3+ 3.Rh1** [ 3.Rg2? Cxh4+ 4.gxh4 Dc6+] **3...Tf8** [ 3...f6 4.Txxg7+ Rxxg7 5.Dxf6+ Rg8 6.Dg7#] **4.Dxf3 1-0**

### (1400) Sawkow – Luckans

Riga, 1993

**1.Ab6 Te8 2.a4** [ 2.Td4 d5 3.exd5 exd5 4.Cxd5+-] **2...d5** [ 2...Rb8 3.Cb5 axb5 4.axb5 Dc8 5.Dd4] **3.e5 Cg8 4.Cb5 axb5 5.axb5** [ 5.Axb5!] **1-0**

### LEGENDA:

#### INTESTAZIONE il Nero Muove

*Edited by Michele Deiana*