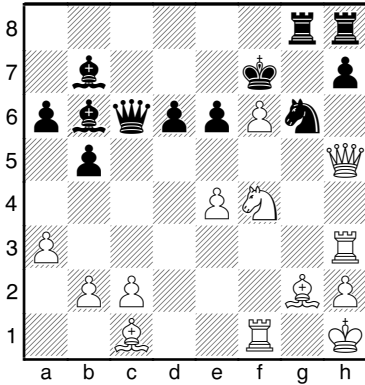
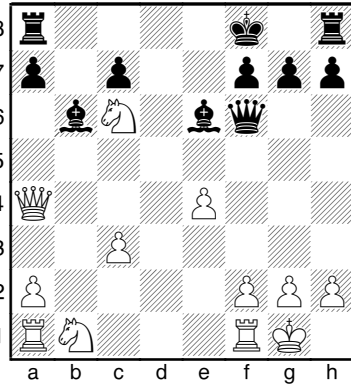


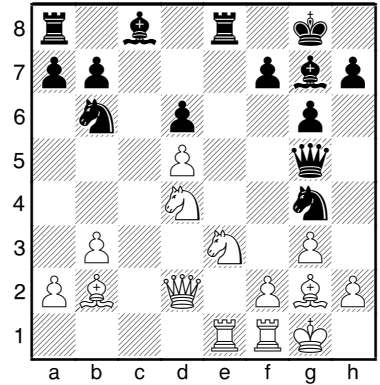
(1201) Panow – Gretsckin
Odessa, 1949



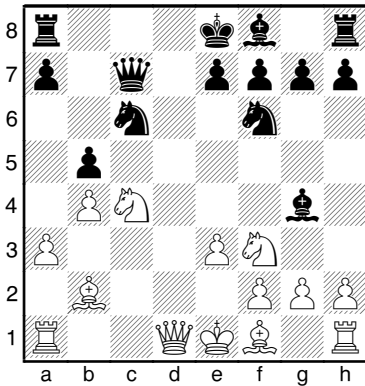
(1204) Morphy – Bryan
New York, 1859



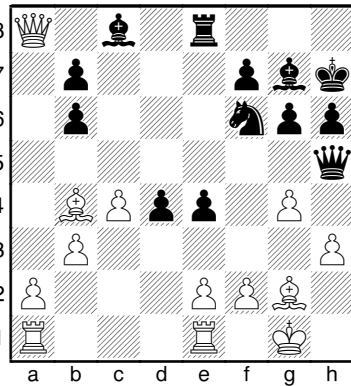
(1207) Margolit – Waserski
Rjasan, 1967



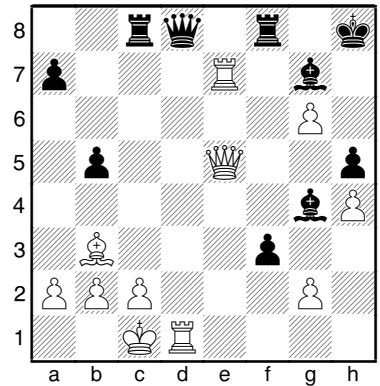
(1202) Rubinstein – Duras
Wien, 1908



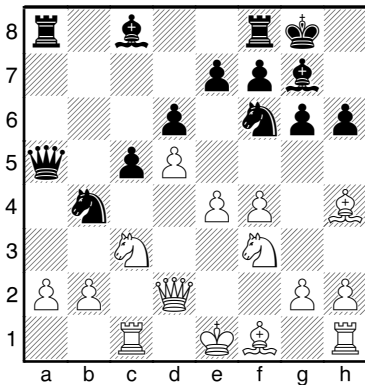
(1205) Gergel – Ziwitz
Fernpartie, 1972



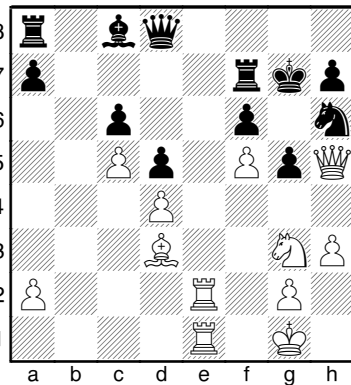
(1208) Ljubojevic – Miles
Olympiade, 1980



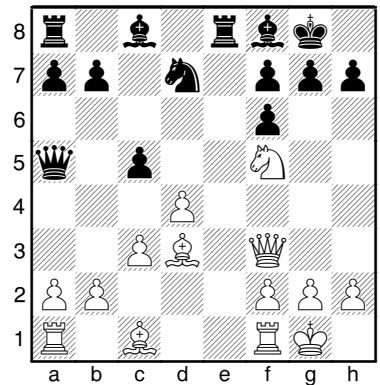
(1203) Nikolajewski – Wasjukow
Partievariante, 1957



(1206) Van der Enden – Praszak
Lublin, 1974

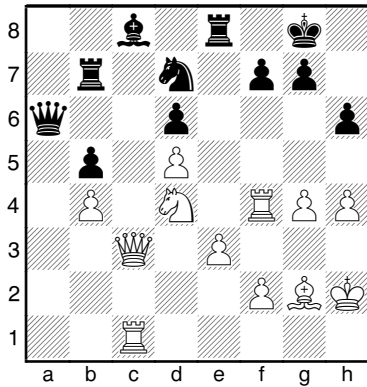


(1209) Dragunow – Odurowski
Donezk, 1961



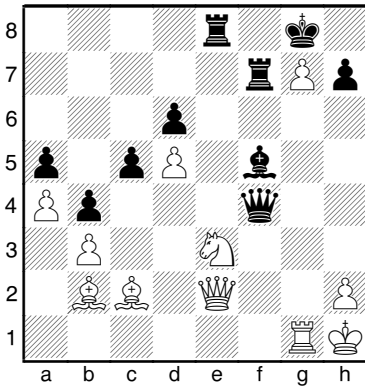
(1210) Horowitz – Denker

New York, 1946



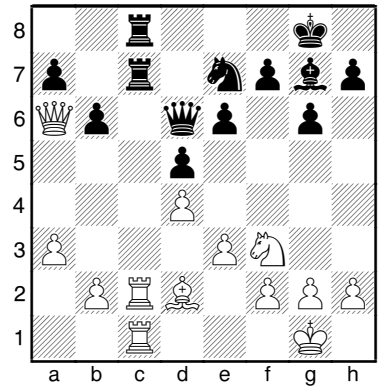
(1213) Nikitin – Butkewitsch

Moskau, 1955



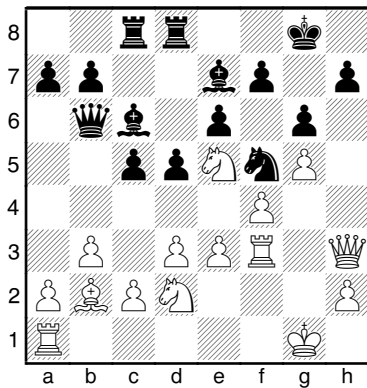
(1216) Toth – Vukovic

Zemun, 1935



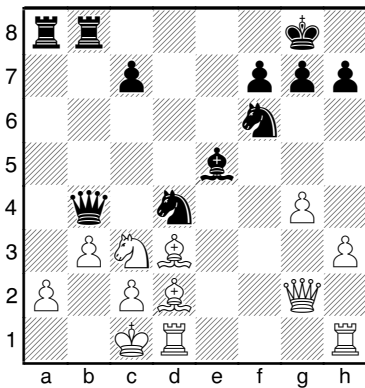
(1211) Ettingen – Januszowski

USA, 1960



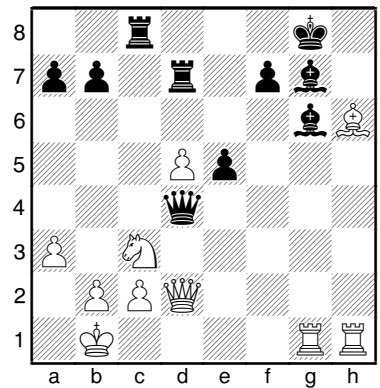
(1214) Koch – Zollner

Muenchen, 1938



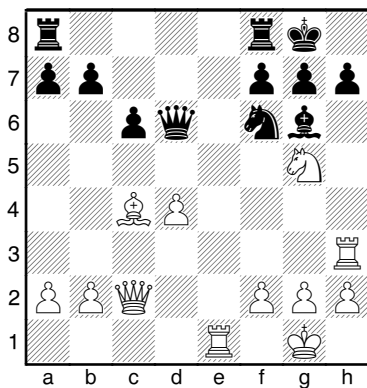
(1217) Bastrikow – Rowner

Odessa, 1946



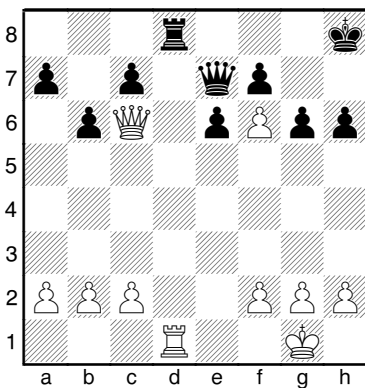
(1212) Kopajew – Tschistjakow

Partievariante, 1938



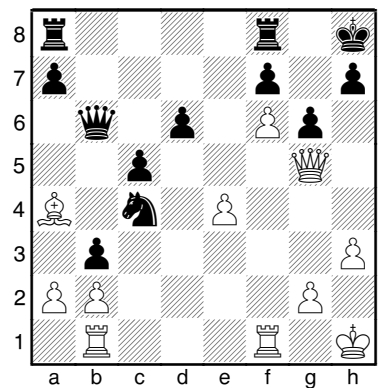
(1215) Pagilla – Carbone

Argentinien, 1985



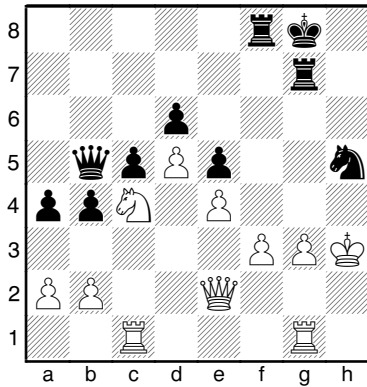
(1218) Bronstein – Keres

Budapest, 1950



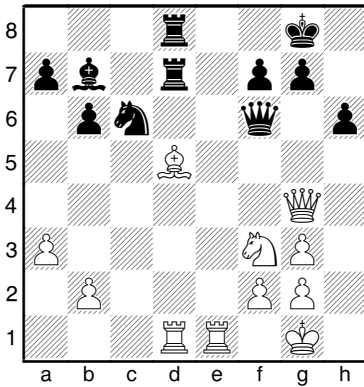
(1219) Westin – Carlsson

Schweden, 1973



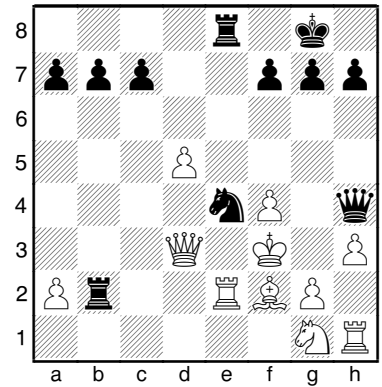
(1222) Kasparow – Karpow

Moskau, 1985



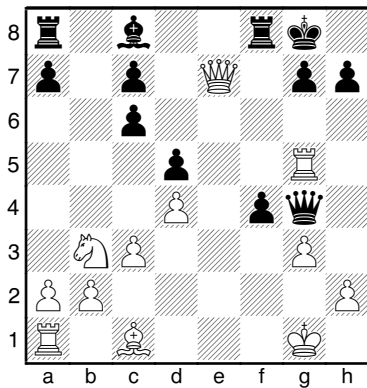
(1225) Keres – Estrin

Partievariante, 1941



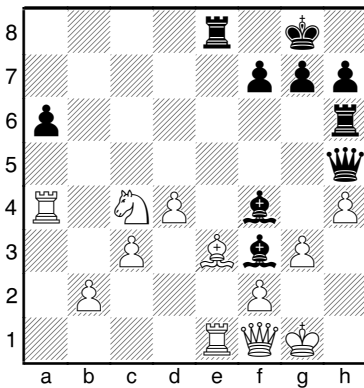
(1220) Carls – Bernstein

Bremen, 1901



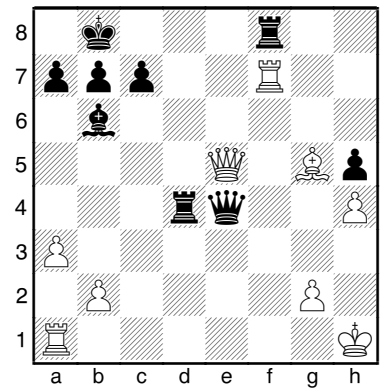
(1223) Iwanow – Makow

UdSSR, 1973



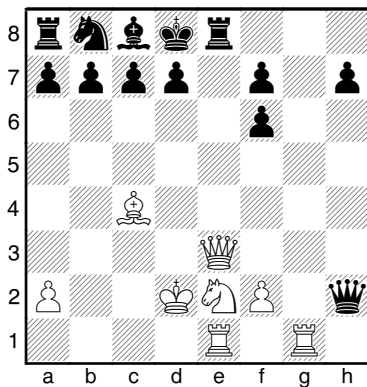
(1226) Lazard – Menchik

Paris, 1929



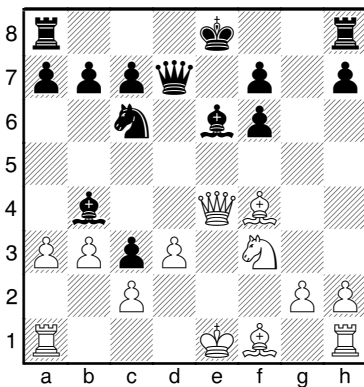
(1221) Perlasca – Grassi

Como, 1901



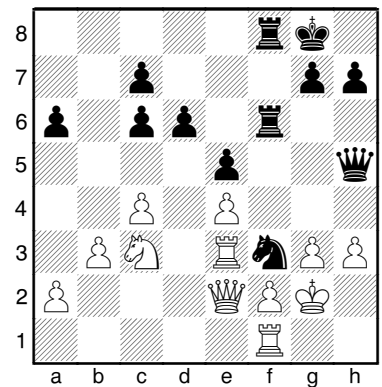
(1224) Tschigorin – Lewitzki

Moskau, 1899



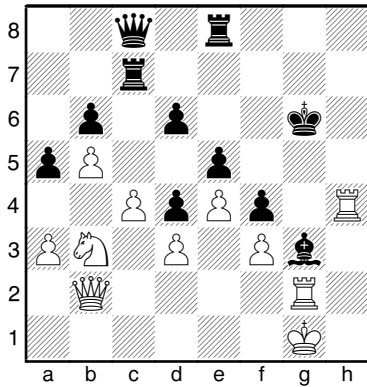
(1227) Schein – Waisman

Charkow, 1962



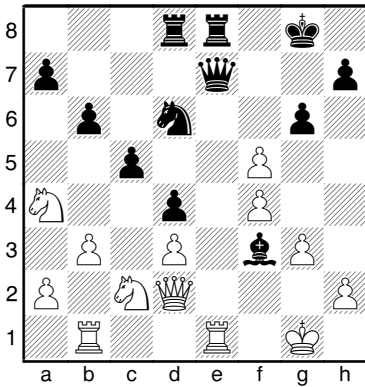
(1228) Masic – Adorjan

Sombor, 1972



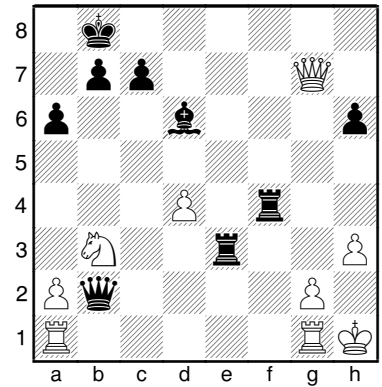
(1231) Smyslow – Tal

Moskau, 1964



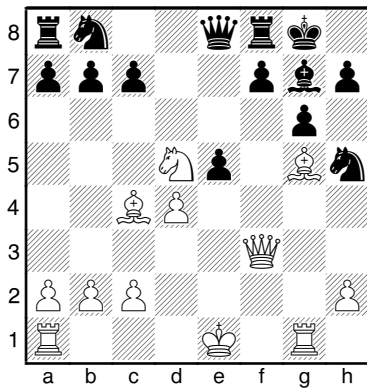
(1234) Mueller – Diemer

BRD, 1958



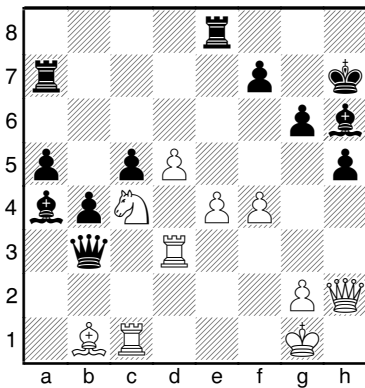
(1229) Filipovic – Gabriz

Polen, 1960



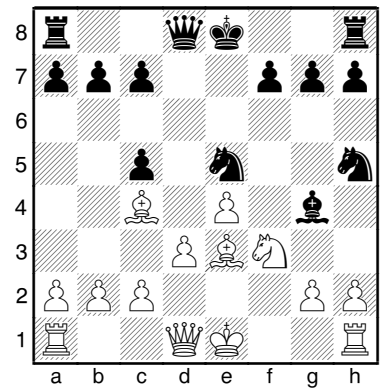
(1232) Lipnizki – Tolusch

Moskau, 1950



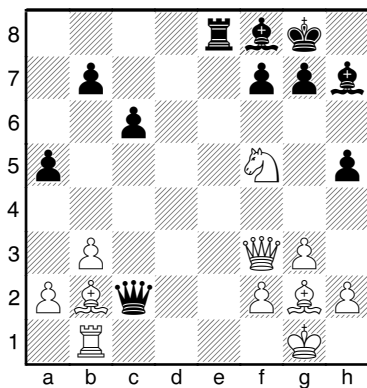
(1235) Aljechin – Tenner

Koeln, 1911



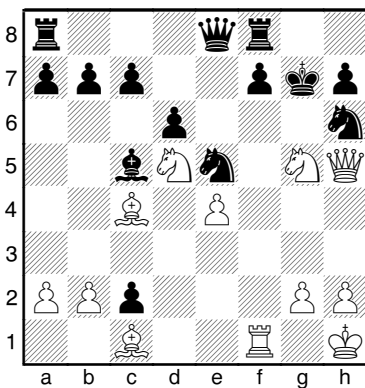
(1230) Raschkowski – Anikajew

Jalta, 1966



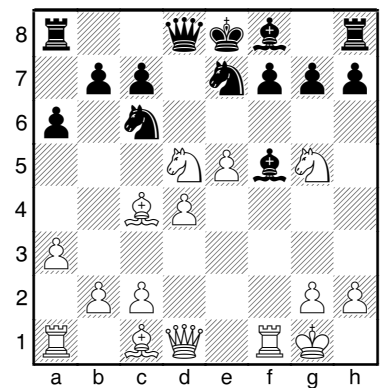
(1233) Tarrasch – Romberg

Nuernberg, 1893



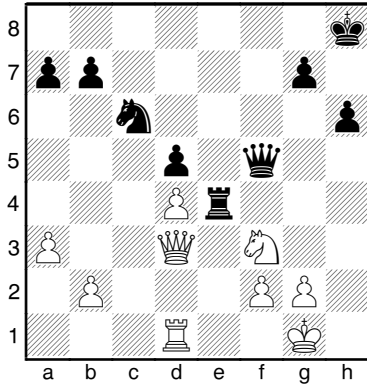
(1236) Tarrasch – Fiedler

Nurnberg, 1892



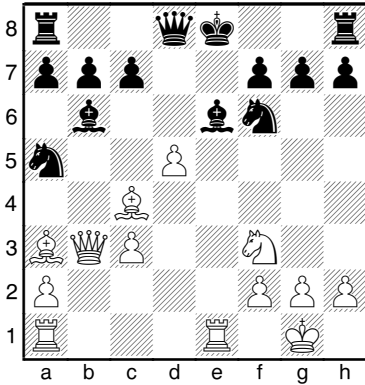
(1237) Liebscher – Munko

Fernpartie, 1994



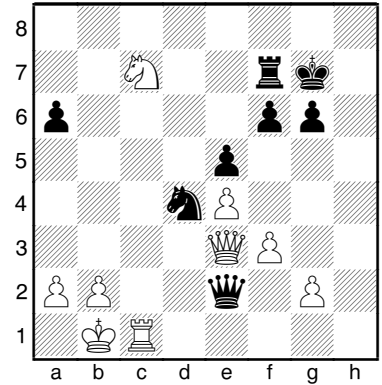
(1240) Steinitz – Rock

London, 1863



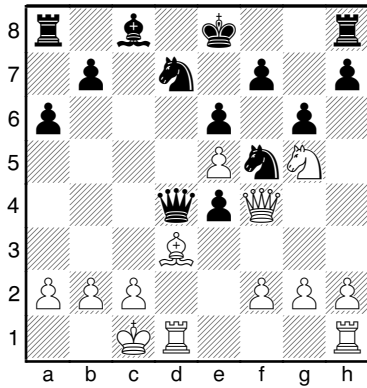
(1243) Spasski – Kortschnoi

Kiew, 1968



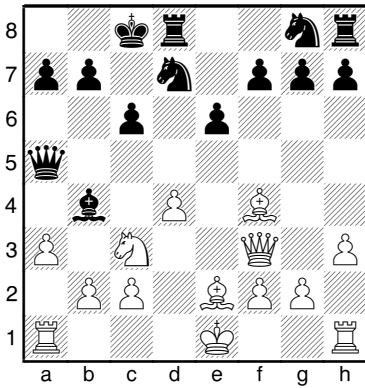
(1238) Winkler – Munko

Partievariante, 1975



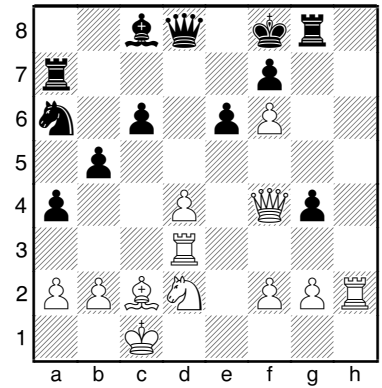
(1241) Canal – N.N.

Budapest, 1834



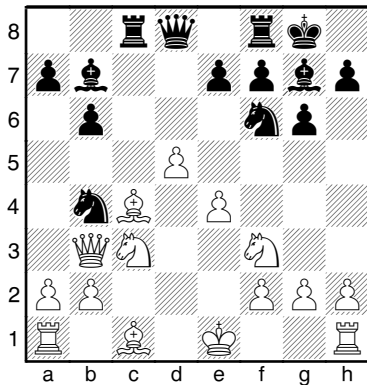
(1244) Alster – Fertscher

Leningrad, 1970



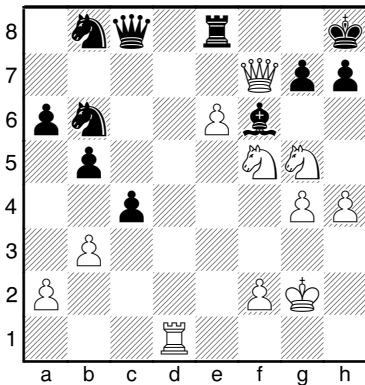
(1239) Munko – Auerswald

LK-Turnier, 1981



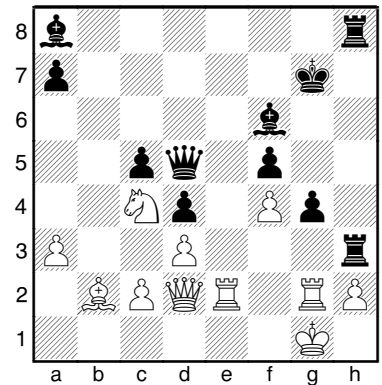
(1242) Tal – Portisch

Biel, 1976

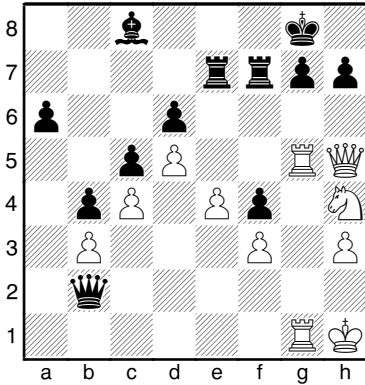


(1245) Dijkstra – Kaiser

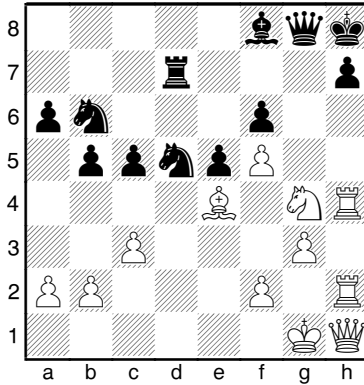
Beverwijk, 1951



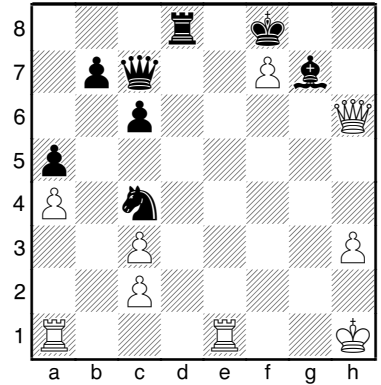
(1246) Janowski – Schlechter
London, 1899



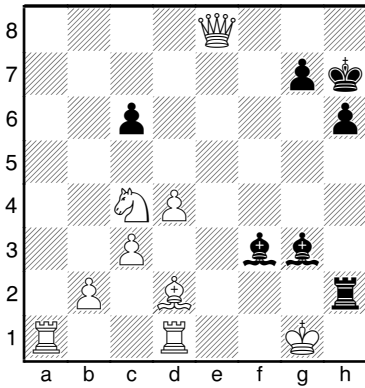
(1249) Panow – Romanowski
Moskau, 1943



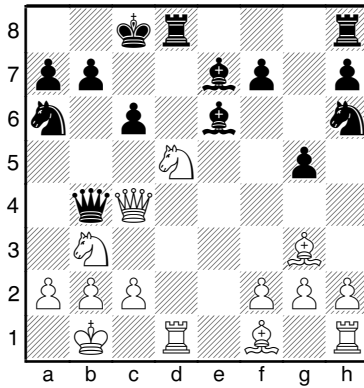
(1252) Popow – Buljovic
Sombor, 1966



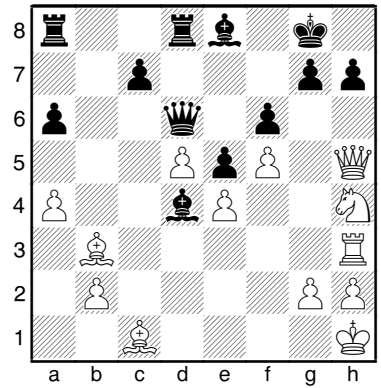
(1247) Chomski – Abelman
Fernpartie, 1956



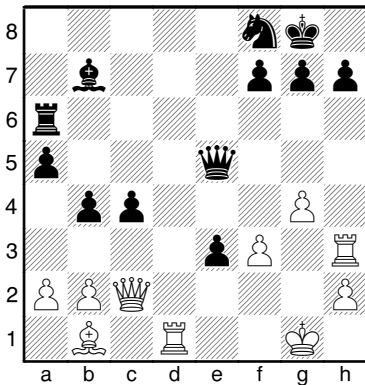
(1250) Rytow – Skuja
Riga, 1971



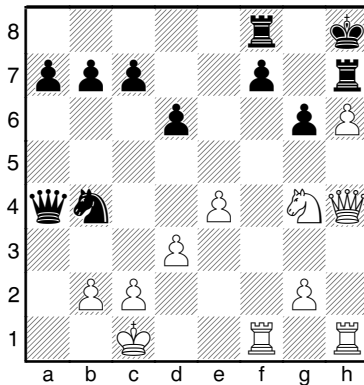
(1253) Ahues – N.N.
Berlin, 1932



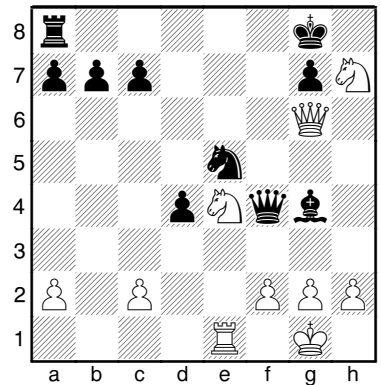
(1248) Vidmar – Teichmann
Partievariante, 1907



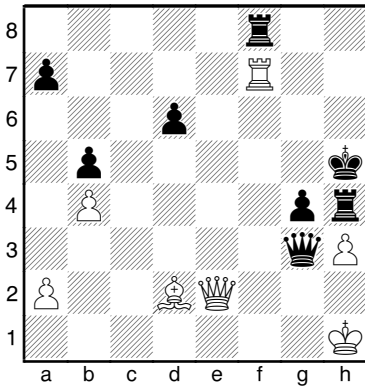
(1251) Lehrstellung



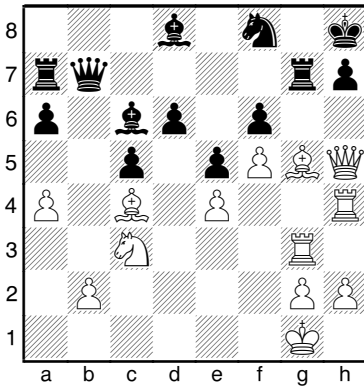
(1254) N.N. – N.N.



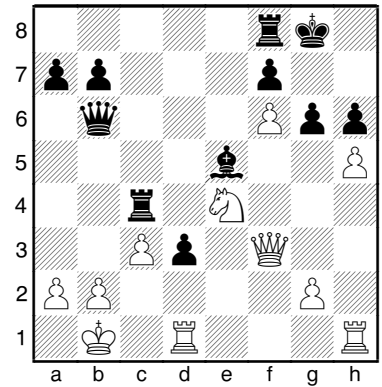
(1255) Simagin – Muchnik
Moskau, 1959



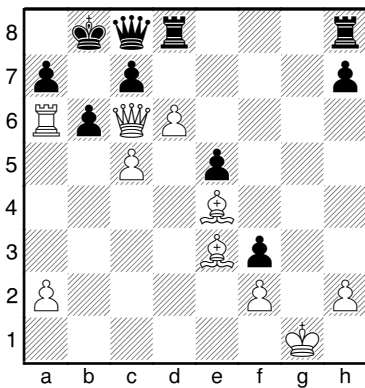
(1258) Ivanov – Kudrin
USA, 1989



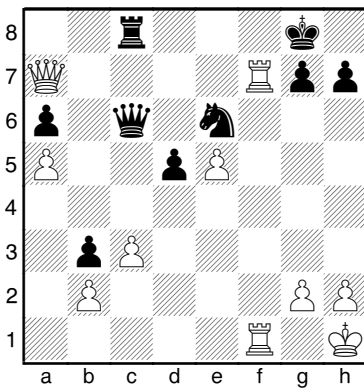
(1261) Sax – Van der Wiel
Biel, 1985



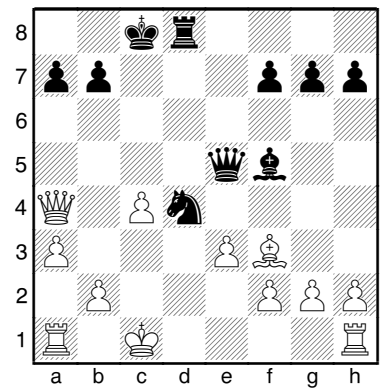
(1256) Saemisch – Schifferdecker
Mainz, 1953



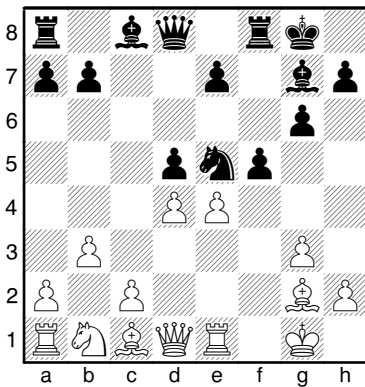
(1259) Aljechin – Bernstein
Vilna, 1912



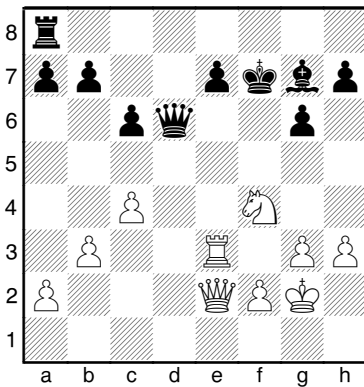
(1262) Spanier – Lorenz
Hannover, 1965



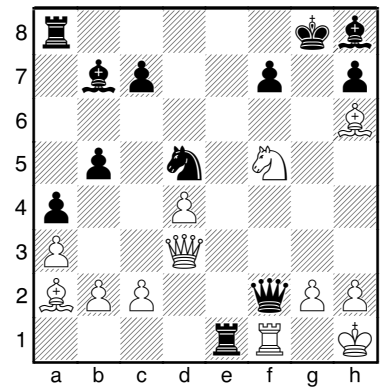
(1257) Langeweg – Perez Garcia
Wijk aan Zee, 1986



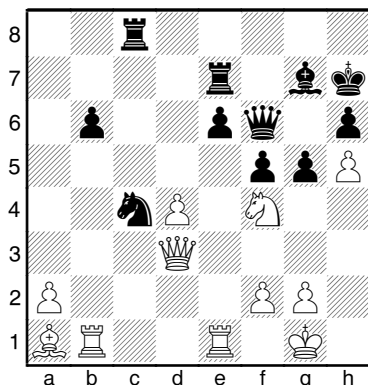
(1260) Lein – Lavrentiev
UdSSR, 1959



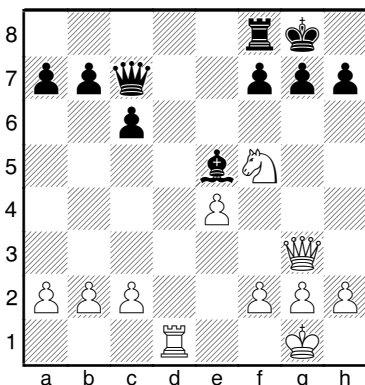
(1263) Hallier – Hermann
Hamburg, 1965



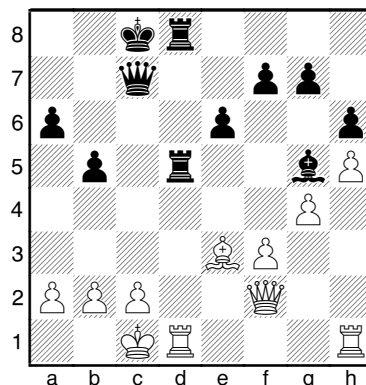
(1264) Gurewitsch – Razuvaev
Moskau, 1987



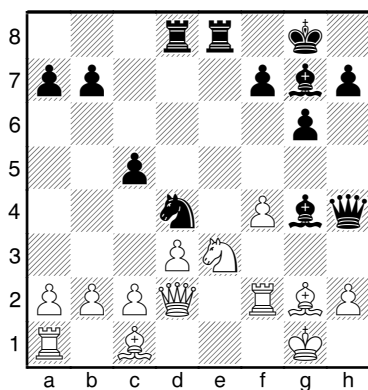
(1267) Capablanca – Fonaroff
New York, 1904



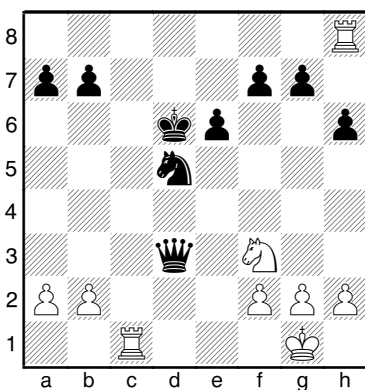
(1270) Pogonin – Sablotzki
Minusinsk, 1988



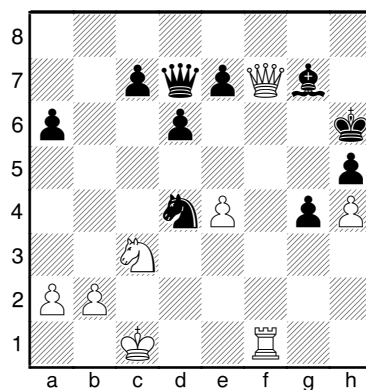
(1265) Barcza – Bilek
Budapest, 1961



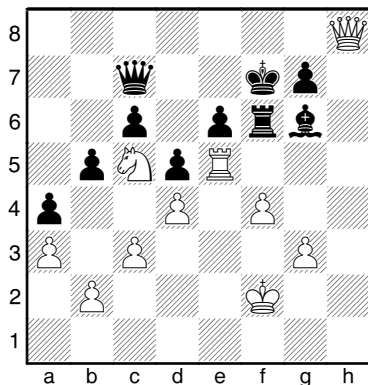
(1268) Mohr – Gonzales
Belfort, 1988



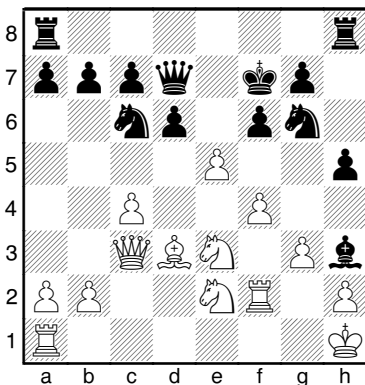
(1271) Miles – Jadoul
Brussel, 1986



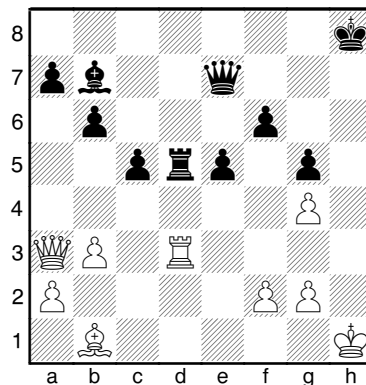
(1266) Wiene – Gode
1990



(1269) Becker – Jung
Wensheim, 1948

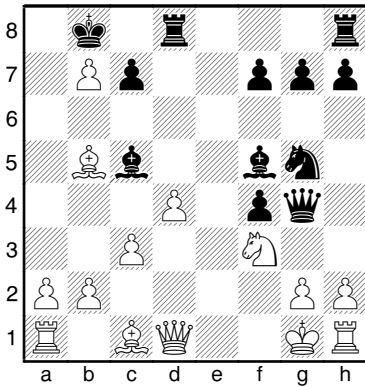


(1272) Schatz – Giegold
Hof, 1928



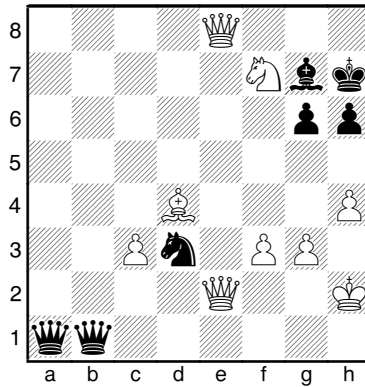
(1273) Neustadt – Valenta

Prag, 1889



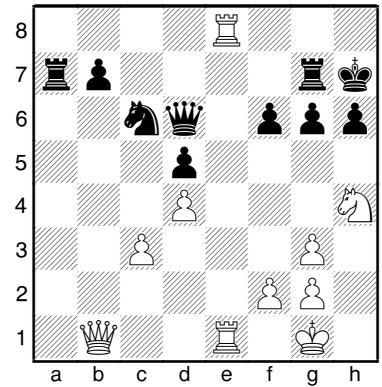
(1276) Siafranska – Belavenets

Selesnovodsk, 1986



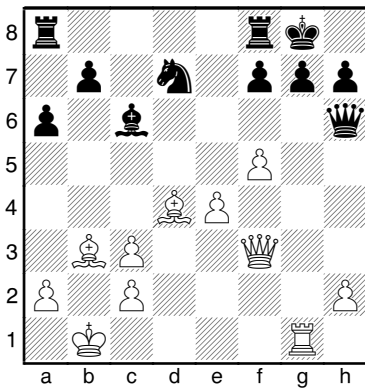
(1279) Salazar – Skoko

Stara Pazova, 1985



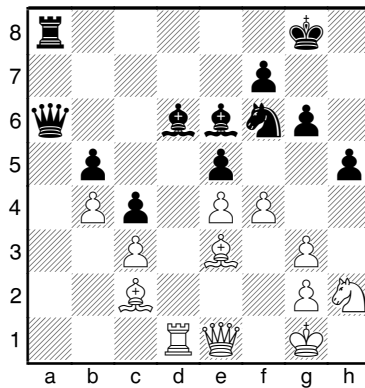
(1274) Beni – Schwarzbach

Oesterreich, 1969



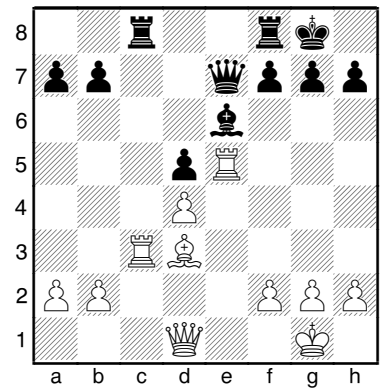
(1277) Blau – Donner

Holland, 1958



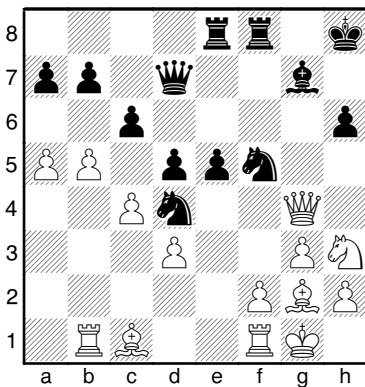
(1280) Eliskases – Frydman

Lodz, 1938



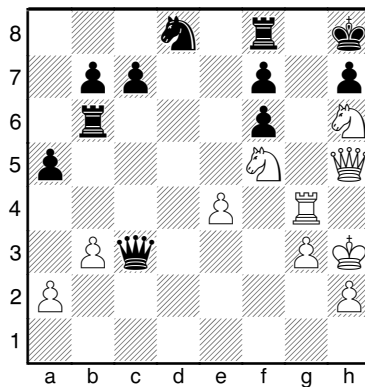
(1275) Flamion – Schlenker

Luetlich, 1980



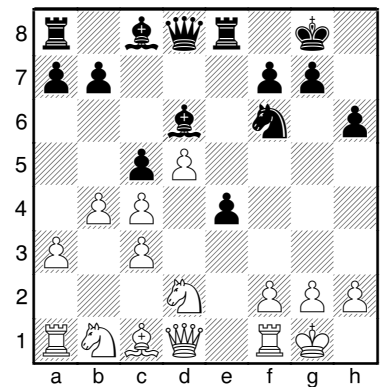
(1278) Zollner – Heywood

England, 1930

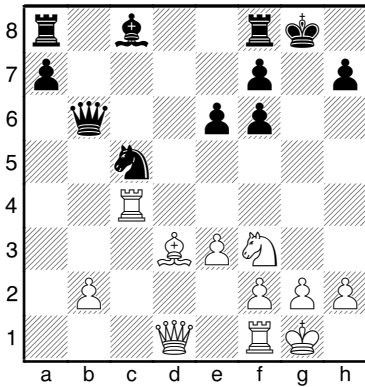


(1281) Fuetterer – Zinkl

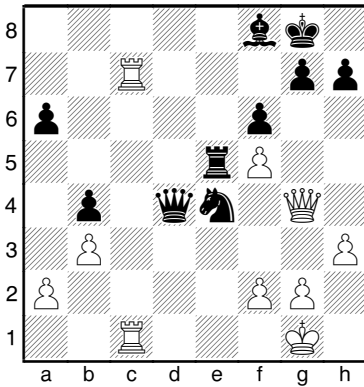
Znaim, 1897



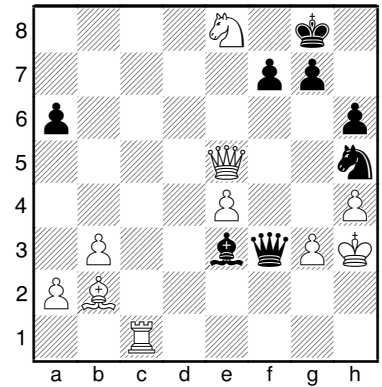
(1282) Negra – Kreculescu
Bukarest, 1957



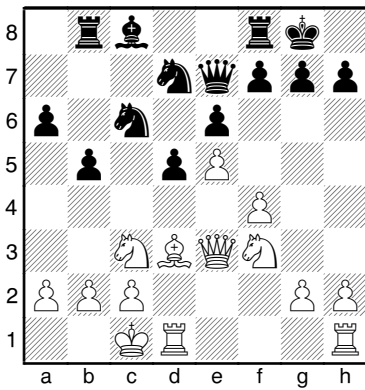
(1285) Bronstein – Gligoric
Moskau, 1967



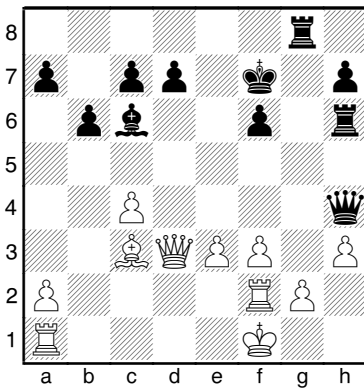
(1288) Weil – Raina
Muenchen, 1936



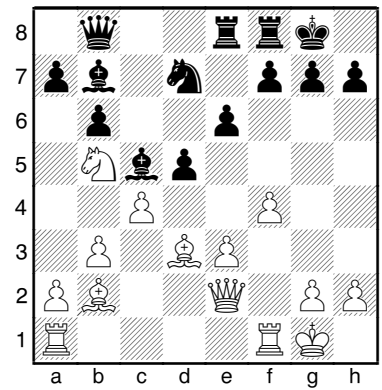
(1283) Hort – Radulov
Albena, 1974



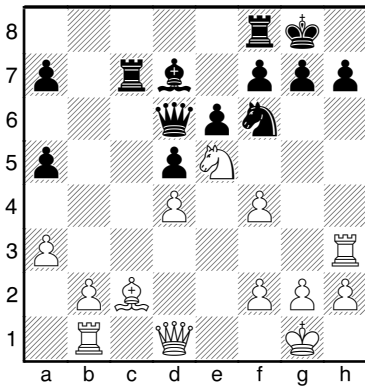
(1286) Gligoric – Larsen
Havanna, 1967



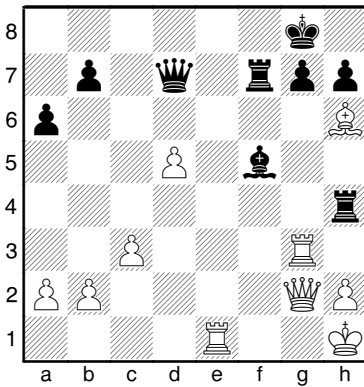
(1289) Rasmussen – Polkinen
Helsinki, 1933



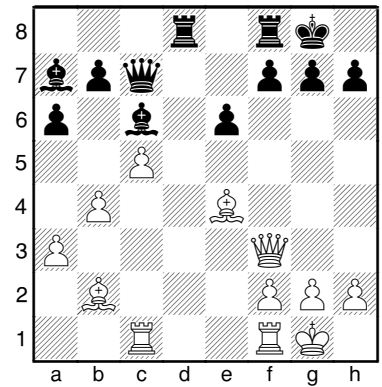
(1284) Podzielny – Behrhorst
Karlsruhe, 1986



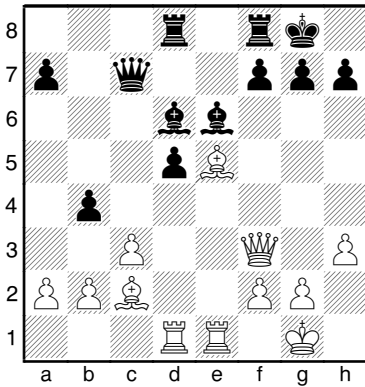
(1287) Spassow – Kozma
Zinnowitz, 1965



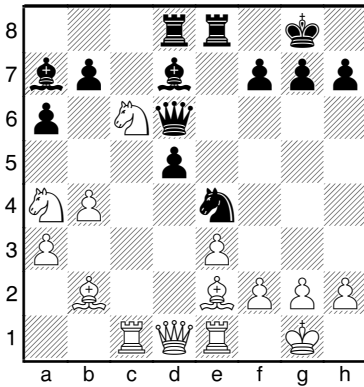
(1290) Miles – Browne
Luzern, 1982



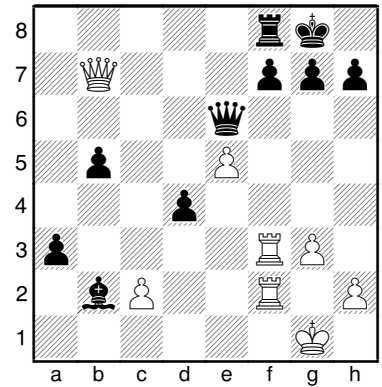
(1291) Koltanowski – Defuss
1936



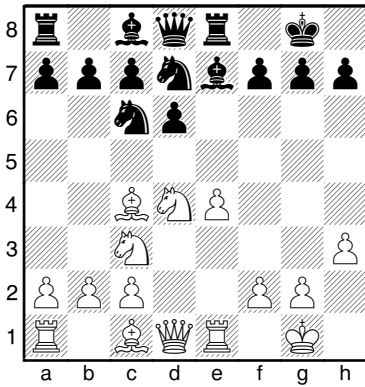
(1294) Nikolaiczuk – Cramling
Dortmund, 1986



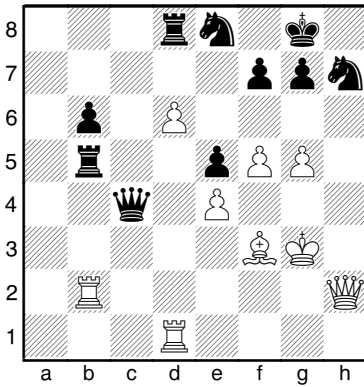
(1297) Tschigorin – Marco
Berlin, 1897



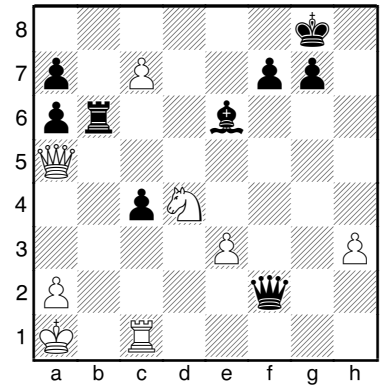
(1292) Von Holzhausen – Tarrasch
Berlin, 1912



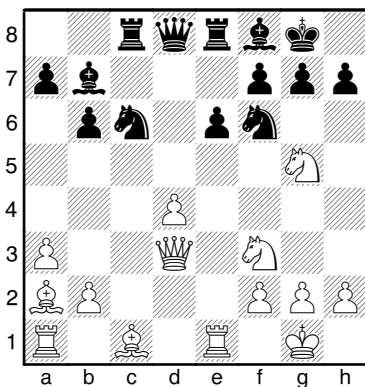
(1295) Karpow – Ribli
Dubai, 1986



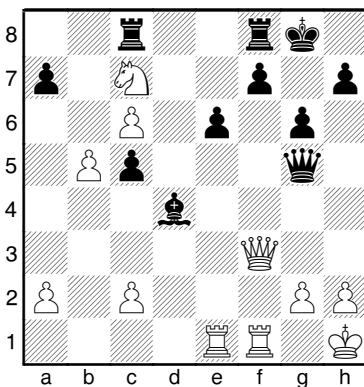
(1298) Suba – Hawelko
Warschau, 1987



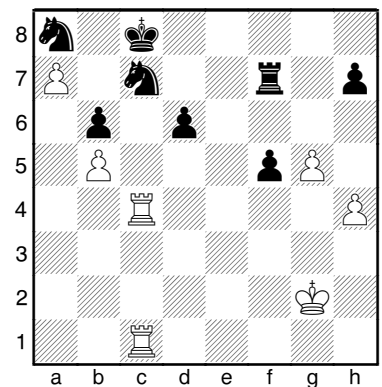
(1293) Dubinin – Petrov
Rostow, 1936



(1296) Kapengut – Schereschewski
UdSSR, 1969

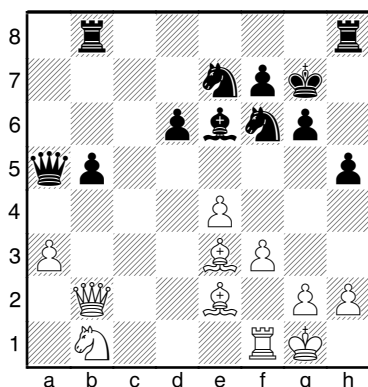


(1299) Rechlis – Miles
Manila, 1990



(1300) Steinberg – Makarov

UdSSR, 1966

**(1201) Panow – Gretschkin**

Odessa, 1949

1.Dxh7+ Txh7 2.Txh7+ Rxf6 [2...Rf8
3.Cxe6+ Re8 4.f7+] 3.Cd5+ Re5
4.Th5+ Rd4 5.Ae3+ Rc4 6.b3# 1-0

(1202) Rubinstein – Duras

Wien, 1908

1.Cce5 Cxe5 2.Cxe5 Axd1 3.Axb5+
Cd7 [3...Rd8 4.Txd1+ Rc8 5.Aa6+ Rb8
6.Cc6+ Dxc6 7.Ae5+ Dd6 8.Tc1]
4.Axd7+ [4.Txd1! 4...Td8 5.Cxd7 Txd7
6.Txd7 Dxd7 7.Axd7+ Rxd7 8.Re2]
4...Dxd7 5.Cxd7 1-0

(1203) Nikolajewski –**Wasjukow**

Partievariante, 1957

1...Cxa2 2.Ta1 Cxc3 3.Txa5 Txa5
4.bxc3 [4.Dc1 Cxc4 5.Ad3 Ab7
6.Axe4 Cxe4; 4.Dxc3 Ta1+ 5.Re2
Aa6+ 6.Re3 Cg4+ 7.Rd2 Axc3+]
4...Ta1+ 5.Re2 Aa6+ 6.Re3 Cg4# 0-1

(1204) Morphy – Bryan

New York, 1859

1.e5 Dg5 2.h4 Dg4 3.Da3+ Rg8 4.Ce7+
Rf8 5.Cg6+ Rg8 6.Df8+ Txf8 7.Ce7# 1-
0

(1205) Gergel – Ziwitz

Fernpartie, 1972

1...Axc4 2.hxc4 Cxc4 3.Dxb7 [3.Dxe8
Dh2+ 4.Rf1 Df4 5.f3 (5.Af3 exf3
6.Ted1 (6.Te1 fxe2+ 7.Dxe2 d3)
6...fxe2+ 7.Dxe2 Ce3+ 8.Re1 Cg2+
9.Rf1 Ce3+) 5...Ce3+ 6.Rf2 Dh4+
7.Rg1 Dg3] 3...Dh2+ 4.Rf1 e3 5.fxe3
Dg3 6.Rg1 Dxe3+ [6...Df2+ 7.Rh1
Te5] 7.Rh1 Cf2+ 8.Rg1 Ch3+ 9.Rh1
Dg1+ 10.Txc1 Cf2+ 11.Rh2 Ae5# 0-1

(1206) Van der Enden –**Praszak**

Lublin, 1974

1.Te8 Dc7 2.Dxc5+ fxc5 3.Ch5# 1-0

(1207) Margolit – Waserski

Rjasan, 1967

1.Cef5 Dxd2 [1...Dd8 2.Cxc7 Rxc7
3.Ce6+] 2.Txe8+ Af8 3.Ce7+ Rh8 [3...
Rg7 4.Cdf5#] 4.Cdf5+ Dxb2
5.Txf8# 1-0

(1208) Ljubojevic – Miles

Olympiade, 1980

1...Dxd1+ 2.Rxd1 fxc2+ 3.Rd2 Tfd8+
4.Ad5 Txd5+ 5.Dxd5 g1D 0-1

(1209) Dragunow – Odurowski

Donezk, 1961

1.b4 [1.Ch6+! 1...gxh6 2.Dg4+ Ag7
3.Axh6 Rf8 4.Dxc7+ Re7 5.Tfe1+ Rd8
6.Dxf7] 1...cxb4 2.Dh5 Rh8 3.Dxf7
Dd8 4.Ch6 [4.Ac4!] 4...Ad6 5.Dg8+
Txc8 6.Cf7# 1-0

(1210) Horowitz – Denker

New York, 1946

1.Dxc8 Txc8 2.Txc8+ Cf8 [2...Rh7
3.Ae4+ g6 4.Txf7#] 3.Ce6 fxe6
4.Txf8+ Rh7 5.Ae4+ g6 6.Th8+ [6.
Tg8!] 6...Rg7 7.g5 hxg5 8.hxc5 1-0

(1211) Ettingen – Januszowski

USA, 1960

1.Cec4 [1.Cd7+-] 1...dxc4 2.Dxh7+
Rhx7 3.Th3+ Rg8 4.Th8# 1-0

(1212) Kopajew –**Tschistjakow**

Partievariante, 1938

1.Dxc6 hxc6 2.Axf7+ Txf7 3.Th8+
Rhx8 4.Cxf7+ Rg8 5.Cxd6 1-0

(1213) Nikitin – Butkewitsch

Moskau, 1955

1.Cxf5 Txc2 2.Ce7+ Tfxe7 3.Axh7+
Rhx7 4.g8D+ Rh6 5.Dg6# 1-0

(1214) Koch – Zollner

Muenchen, 1938

1...Txa2 2.Cxa2 Ce2+ [2...Cxb3+-]
3.Rb1 [3.Dxe2 Da3+ 4.Rb1 Db2#]
3...Dxb3+ 4.cxb3 Txb3+ 0-1

(1215) Pagilla – Carbone

Argentinien, 1985

1.Da8 Txa8 2.fxc7 1-0

(1216) Toth – Vukovic

Zemun, 1935

1.Dxc8+ Txc8 [1...Cxc8 2.Txc7 Dxc7
3.Txc7] 2.Txc8+ Cxc8 3.Txc8+ Af8
4.Ab4 Dd7 5.Txf8+ 1-0

(1217) Batrikow – Rowner

Odessa, 1946

1.Axc7 Dxd2 2.Af6 1-0

(1218) Bronstein – Keres

Budapest, 1950

1.Tf4 bxa2 2.Dh6 axb1D+ 3.Rh2 Tg8
4.Dxh7+ Rxh7 5.Th4# 1-0

(1219) Westin – Carlsson

Schweden, 1973

1...Rf7 2.Cxd6+ Re7 3.Dxb5 Cf4+
4.gxf4 Th8# 0-1

(1220) Carls – Bernstein

Bremen, 1901

1...Dd1+ 2.Rg2 [2.Rf2 fxc3+] 2...f3+
3.Rf2 Dg1+ 4.Rxc1 f2+ 5.Rf1 Ah3+
6.Re2 f1D+ 0-1

(1221) Perlasca – Grassi

Como, 1901

1.Dxe8+ Rxe8 2.Cd4+ Rf8 3.Te8+
Rxe8 4.Tg8+ Re7 5.Cf5# 1-0

(1222) Kasparow – Karpow

Moskau, 1985

1.Dxd7 Txd7 2.Te8+ Rh7 3.Ae4+ g6
4.Txd7 Aa6 5.Axc6 1-0

(1223) Iwanow – Makow

UdSSR, 1973

3...Dxh4 4.gxh4 Tg6+ 5.Dg2 Txc2+
6.Rf1 Ah2 0-1

(1224) Tschigorin – Lewitzki

Moskau, 1899

1...0-0-0 2.axb4 Ad5 3.De2 Tde8 [3...
The8!] 4.Ae3 Axf3 [4...Txc3 5.Dxc3
Te8 6.Dxe8+ Dxe8+ 7.Rf2+] 5.Dxf3
Cd4 6.Df2 Txe3+ 7.Rd1 Dg4+ 8.Rc1
Df4 0-1

(1225) Keres – Estrin

Partievariante, 1941

1...Dxf2+ 2.Txf2 Txf2+ 3.Rg4 Txc2+
4.Rh4 Cd6 [4...Tg6 5.Db5 c6 6.dxc6
bxc6 7.Db3] 5.Cf3 Te3 0-1

(1226) Lazard – Menchik

Paris, 1929

1...Dxh4+ 2.Axh4 Txh4+ 3.Dh2 Txh2+
4.Rxh2 Txf7 0-1

(1227) Schein – Waisman

Charkow, 1962

1...Dxh3+ 2.Rxh3 Th6+ 3.Rg4 Ch2+
4.Rg5 Th3 5.Tf3 h6+ [5...Txf3? 6.Dxf3
Cxf3+ 7.Rg4] 6.Rg6 Cxf3 0-1

(1228) Masic – Adorjan

Sombor, 1972

1...Th8 2.Tg4+ Dxc4 3.fxc4 Tch7
4.Rf1 [4.Txc3 Th1+ 5.Rf2 fxc3+ 6.Rf3
T8h2 7.Cd2 g2] 4...Th1+ 5.Tg1 T8h2
6.Dxh2 [6.Dd2 a4] 6...Txb2 7.Tg2 Th3
0-1

(1229) Filipovic – Gabrisz

Polen, 1960

1.Dxh5 gxh5 2.Af6 Cd7 3.Axg7 1-0

(1230) Raschkowski –**Anikajew**

Jalta, 1966

4.Ch6+ Rh8 [4...gxh6 5.Df6 Dxb1+
6.Af1 Dxb2 7.Dxb2] 5.Cxf7+ Rg8
6.Ch6+ gxh6 7.Dd5+ cxd5 8.Axd5+ 1-
0

(1231) Smyslow – Tal

Moskau, 1964

1...De2 2.Txe2 Txe2 3.Dxe2 [3.Dc1
Tg2+ 4.Rf1 Txb2 5.Ce1 Ad5 6.Tb2 (6.g4
gxf5 7.gxf5 Cxf5; 6.fxc6 Th1+
7.Re2 Te8+ 8.Rd2 Th2+ 9.Rd1 The2
10.gxh7+ Rxh7 11.Dd2 Txd2+ 12.Rxd2
Tg8) 6...Th1+ 7.Rf2 Te8] 3...Axe2
4.Cb2 gxf5 0-1

(1232) Lipnizki – Tolusch

Moskau, 1950

1...Dxb1 2.Txb1 Ac2 3.Tbd1 Axd3
4.Txd3 Txe4 5.Cd2 Axf4 0-1

(1233) Tarrasch – Romberg

Nuernberg, 1893

1.Dxh6+ Rxh6 2.Ce6+ Rh5 [2...Rg6
3.Tf6+ Rh5 4.Th6+ Rg4 5.Cf6#]
3.Cdf4+ [3.Tf5+! 3...Rh4 4.Cf6 fxc6
5.Ag5#] 3...Rh6 4.Ce2+ [4.Ch3+!]
4...Rg6 5.Tf6+ Rxf6 6.Ag5+ Rg6
7.C2f4# 1-0

(1234) Mueller – Diemer

BRD, 1958

1...Txb3+ 2.gxh3 Dh2+ 3.Rxh2 Tf2+
4.Rh1 Th2# 0-1

(1235) Aljechin – Tenner

Koeln, 1911

1.Cxe5 Axd1 2.Axf7+ Re7 [2...Rf8
3.Axc5+ Dd6 4.Axd6+ cxd6 5.Txd1 Cf6
6.Cc4 Rxf7 7.Cxd6+] 3.Axc5+ Rf6 4.0-
0+ Rxe5 5.Tf5# 1-0

(1236) Tarrasch – Fiedler

Nurnberg, 1892

1.Cxf7 Rxf7 2.Cxc7+ Rg6 3.Dg4+
Axg4 4.Af7# 1-0

(1237) Liebscher – Munko

Fernpartie, 1994

29...Cxd4! 30.Rf1 [30.Cxd4 Te1+
31.Txe1 (31.Rh2 Dh5+ 32.Rg3 Txd1)
31...Dxd3] 30...Cxf3 31.Dxf3 Dxf3 0-1

(1238) Winkler – Munko

Partievariante, 1975

17.Ab5 Db6 [17...Db4 18.Axd7+ Axd7
19.Cxe4 Da5 20.Cf6+] 18.Axd7+ Axd7
19.g4 Ac6 [19...Cd4 20.Dxf7+ Rd8
21.Td2 Re8 22.Thd1] 20.gxf5 exf5 [20...
gxf5?? 21.Dh4± Dc7 22.Cxh7]
21.e6 f6 [21...fxc6 22.De5 0-0
23.Dxe6+] 22.Cf7 0-0 23.Dxf5 Txf7
24.exf7+ Rxf7 25.Df4 1-0

(1239) Munko – Auerswald

LK-Turnier, 1981

12...Txc4! 13.Dxc4 Cc2+ 14.Re2 Cxa1
15.Ad2 Ce2# [15...b5?! 16.Cxb5 Cxe4
17.Dxe4 Axd5 (17...Axb2 18.Db1 Af6
19.Cc3±) 18.Da4 Ac6 19.Dc4 Axf3+
20.gxf3 Axb2 21.Cxa7 Dd7# 22.Ac3#]
16.Tc1 Dc8 [16...Cd4+? 17.Dxd4 Cxd5
18.Da4 Cxc3+ 19.Axc3 Dc7#] 17.Dxc8-
+ [17.Da4?! Aa6+ (17...b5 18.Dxc2 b4
19.Cd1 Dxc2 20.Txc2 Cxe4 21.Axb4
Axd5 22.b3#) 18.Rd1 Ad3 19.Ce5 b5
20.Dxa7 Cb4 21.Dxc7 (21.f4 Cxe4
22.Cxe4 Ac2+ 23.Re1 Axe5 24.Axb4
Axb2) 21...Cg4 22.Dxb4 (22.Cxg4
Dxg4+ 23.f3 Dxg2 24.Dxb4 Dxg3+) 22...
Cxe5] 17...Txc8 18.Txc2 Cxe4
19.Tc1 Cxc3+ 20.Axc3 Axd5 0-1

(1240) Steinitz – Rock

London, 1863

1.dxe6 Cxb3 2.exf7+ Rd7 3.Ae6+ Rc6
4.Ce5+ Rb5 5.Ac4+ Ra4 6.axb3+ 1-0

(1241) Canal – N.N.

Budapest, 1834

1.axb4 Dxa1+ 2.Rd2 Dxh1 [2...Ce5
3.Axe5 Dxh1 4.Dxf7 Td7 5.De8+ Td8
6.Dxe6+ Td7 7.De8+ Td8 8.Ag4#]
3.Dxc6+ bxc6 4.Aa6# 1-0

(1242) Tal – Portisch

Biel, 1976

1.Ch6 Txe6 [1...Te7 2.Dxe7 Axe7
3.Cgf7#] 2.Td8+ Dxd8 3.Dxe6 1-0

(1243) Spasski – Kortschnoi

Kiew, 1968

1.Ce6+ Rh7 [1...Rg8 2.Tc8+ Rh7
3.Dxe2 Cxe2 4.Ta8] 2.Dh6+ Rxh6

3.Th1# 1-0

(1244) Alster – Fertscher

Leningrad, 1970

1.Dh6+ Re8 2.Dg7 Tf8 [2...Txc7
3.fxc7 Re7 4.Th8] 3.Dxf8+ Rxf8
4.Th8# 1-0

(1245) Dijkstra – Kaiser

Beverwijk, 1951

1...Txb2 2.Txb2 Dh1+ 3.Txb1 Txb1+
4.Rf2 Ah4# 0-1

(1246) Janowski – Schlechter

London, 1899

1.Dxh7+ Rxh7 2.Th5+ Rg8 3.Cg6 Tf6
4.Th8+ Rf7 5.Tf8# 1-0

(1247) Chomski – Abelman

Fernpartie, 1956

1.Dg6+ Rxc6 2.Ce5+ Axe5 3.dxe5
Th1+ 4.Rf2 Txd1 5.Txd1 ½-½

(1248) Vidmar – Teichmann

Partievariante, 1907

1.Dxh7+ Cxh7 2.Td8+ Cf8 3.Th8+
Rxh8 4.Txf8# 1-0

(1249) Panow – Romanowski

Moskau, 1943

1.Axd5 Cxd5 2.Dxd5 Txd5 3.Cxf6! [3.
Txb7+ 3...Dxh7 4.Txb7+ Rxh7
5.Cxf6+ Rh6 6.Cxd5] 1-0

(1250) Rytow – Skuja

Riga, 1971

1.Dxc6+ bxc6 2.Axa6+ Rd7 3.Cf6# 1-0

(1251) Lehrstellung

1.Df6+ Rg8 2.Dg7+ Txc7 3.Cf6+ Rh8
4.hxg7+ Rxg7 5.Th7# 1-0

(1252) Popow – Buljovic

Sombor, 1966

1.Te8+ Txe8 2.Dxc7+ Rxg7 3.fxc8C+
Rh6 4.Cxc7 1-0

(1253) Ahues – N.N.

Berlin, 1932

1.Dxh7+ Rxh7 2.Cg6+ Rg8 3.Th8+ Rf7
4.Tf8+ Dxf8 5.d6# 1-0

(1254) N.N. – N.N.

1.Cef6+ Rh8 2.Cg5 Df5 [2...Af5
3.Dh5+ Ah7 4.Dxh7#] 3.De8+ Txe8
4.Cf7+ Cxf7 5.Txe8# 1-0

(1255) Simagin – Muchnik

Moskau, 1959

1.Tf5+ Txf5 [1...Rg6 2.De6+ Rg7
3.De7+ Rg6 4.Tg5+ Rh6 5.Dg7#]

2.De8+ Tf7 3.Dxf7# 1-0

(1256) Saemisch – Schifferdecker

Mainz, 1953

1...Tdg8+ 2.Rf1 Tg1+ 3.Rxg1 Dg8+
4.Rf1 Dc4+ 5.Rg1 [5.Re1 De2#]
5...Tg8+ 6.Rh1 Df1# 0-1

(1257) Langeweg – Perez Garcia

Wijk aan Zee, 1986

1...Cf3+ 2.Axf3 [2.Dxf3 Axd4+]
2...dxe4 3.Axe4 Dxd4+ 0-1

(1258) Ivanov – Kudrin

USA, 1989

1.Axf6 Axf6 2.Dxh7+ Cxh7 3.Txh7+
Rxb7 4.Th3+ 1-0

(1259) Aljechin – Bernstein

Vilna, 1912

1.Txg7+ Cxg7 2.Df7+ Rh8 3.Df8+
Txf8 4.Txf8# 1-0

(1260) Lein – Lavrentiev

UdSSR, 1959

1.c5 Dxc5 [1...Dd7 2.Dc4+ Rf8 (2...e6
3.Txe6; 2...Re8 3.Dg8+) 3.Ce6+ Rg8
4.Cc7+] 2.b4 Dxb4 3.a3 1-0

(1261) Sax – Van der Wiel

Biel, 1985

1...Txe4 2.Dxe4 Axc3 3.b3 Df2 0-1

(1262) Spanier – Lorenz

Hannover, 1965

1...Da5 2.Dd1 [2.Dxa5 Cb3#] 2...Cb3+
3.Dxb3 Dd2# 0-1

(1263) Hallier – Hermann

Hamburg, 1965

1.Ce7+ Cxe7 [1...Txe7 2.Txf2 Te1+
3.Tf1] 2.Dg3+ Dxc3 3.Axf7# 1-0

(1264) Gurewitsch – Razuvaev

Moskau, 1987

1.Cd5 exd5 2.Txe7 Dxe7 3.Dxf5+ Rg8
4.Dxc8+ 1-0

(1265) Barcza – Bilek

Budapest, 1961

1...Txe3 2.Dxe3 Cxc2 3.Txc2 [3.Dd2
Cxa1] 3...Ad4 0-1

(1266) Wiene – Gode

1990

1.Txe6 Txe6 2.Dxg7+ Rxg7 3.Cxc6+ 1-0

(1267) Capablanca – Fonaroff

New York, 1904

1.Ch6+ Rh8 2.Dxe5 Dxe5 3.Cxf7+
Txf7 4.Td8+ 1-0

(1268) Mohr – Gonzales

Belfort, 1988

1.Td8+ Re7 2.Td7+ Re8 [2...Rf6
3.Txf7+ Rxf7 4.Ce5+; 2...Rxd7 3.Ce5+]
3.Ce5 1-0

(1269) Becker – Jung

Wensheim, 1948

1.e6+ Dxe6 [1...Axe6 2.Axg6+ Rxg6
3.f5+] 2.Axg6+ Rxg6 3.f5+ Axf5
4.Cf4+ 1-0

(1270) Pogonin – Sablotzki

Minusinsk, 1988

1...Dh2 [1...Dg3!] 2.Dxh2 [2.Txd5
Dxh1+] 2...Axe3+ 3.Td2 Txd2 0-1

(1271) Miles – Jadoul

Bruessel, 1986

1.Tf5 Cxf5 2.exf5 Rh7 3.f6 1-0

(1272) Schatz – Giegold

Hof, 1928

1...Dh7+ 2.Th3 Td1+ [2...Dxh3+
3.gxh3 Td1+ 4.Rh2 Th1+ 5.Rg3 Tg1+]
3.Rh2 Th1+ 4.Rg3 [4.Rxh1 Dxh3+]
4...Dh4+ 5.Txh4+ gxh4# 0-1

(1273) Neustadl – Valenta

Prag, 1889

1...Txd4 2.cxd4 Axd4+ 3.Rf1 [3.Dxd4
Cxf3+] 3...Dxc2+ 4.Rxc2 [4.Re1 Df2#]
4...Ah3# 0-1

(1274) Beni – Schwarzbach

Oesterreich, 1969

1.Dh3 Dxh3 2.Txg7+ Rh8 3.Txf7+ Rg8
4.Tg7+ Rh8 5.Tg8# 1-0

(1275) Flamig – Schlenker

Luettich, 1980

1...Cxc3 2.f3 [2.Af3 Cxf3+; 2.Dxc3
Ce2+ 3.Rh1 Cxc3+] 2...Dxc3 3.fxc3
Cde2# 0-1

(1276) Siafranska – Belavenets

Selesnovodsk, 1986

1.Dh8+ Axh8 2.Cg5+ hxg5 3.De7+
Rg8 [3...Rh6 4.Df8+ Ag7 5.Dxc7+ Rh5
6.Dh7#] 4.De8+ Rh7 5.Dxh8# 1-0

(1277) Blau – Donner

Holland, 1958

1.Txd6 Dxd6 2.fxe5 Dxe5 3.Af4 1-0

(1278) Zollner – Heywood

England, 1930

1.Dxf7 Cxf7 2.Tg8+ Txg8 3.Cxf7# 1-0

(1279) Salazar – Skoko

Stara Pazova, 1985

1.Cf5 gxf5 2.Dxf5+ Tg6 3.Tg8 Rxg8
4.Dxc6+ Rf8 5.Te8# 1-0

(1280) Eliskases – Frydman

Lodz, 1938

1.Axh7+ Rxh7 [1...Rh8 2.Dh5] 2.Dc2+
Rg8 3.Txc8 Txc8 4.Dxc8+ Axc8
5.Txe7 1-0

(1281) Fuetterer – Zinkl

Znaim, 1897

1...Axh2+ 2.Rxh2 Cg4+ 3.Rg3 [3.Rg1
Dh4 4.Te1 Dxf2+ 5.Rh1 Dh4+ 6.Rg1
Dh2+ 7.Rf1 Dh1+ 8.Re2 Dxc2#]
3...Dd6+ 4.f4 [4.Rh3 Cxf2+] 4...exf3+
5.Rxf3 Te3# 0-1

(1282) Negra – Kreulescu

Bukarest, 1957

1.Axh7+ Rxh7 2.Ce5 Td8 [2...fxe5
3.Dh5+ Rg7 4.Dg5+ Rh7 5.Th4#]
3.Dh5+ Rg8 4.Tg4+ Rf8 5.Dxf7# 1-0

(1283) Hort – Radulov

Albena, 1974

1.Axh7+ Rxh7 2.Cg5+ Rg6 [2...Rg8
3.Dh3 Td8 4.Dh7+ Rf8 5.Dh8#] 3.Dh3
Cdx5 4.Dh7+ Rf6 5.Cce4+ [5.Cge4+!]
5...dxe4 6.Cxe4# 1-0

(1284) Podzielný – Behrhorst

Karlsruhe, 1986

1.Axh7+ Rh8 [1...Cxh7 2.Dh5 Tfc8
3.Dxf7+ Rh8 4.Cg6#] 2.Ag6+ Rg8
3.Axf7+ Txf7 4.Th8+ Rxh8 5.Cxf7+ 1-0

(1285) Bronstein – Gligoric

Moskau, 1967

1.Txg7+ Axg7 2.Tc8+ Rf7 3.Dh5+ Re7
4.De8+ Rd6 5.Dd8# 1-0

(1286) Gligoric – Larsen

Havanna, 1967

1...Txg2 2.Txg2 [2.Rxc2 Dxh3+ 3.Rg1
Dh1#] 2...Dxh3 3.e4 [3.Rg1 Axf3
4.Df1 Axg2 5.Dxc2 Tg6] 3...Tg6 4.De2
Dh1+ 5.Rf2 Txg2+ 0-1

(1287) Spassow – Kozma

Zinnowitz, 1965

1.Txg7+ Txg7 2.Tc8+ Rf7 3.Dxc7+
Rxc8 4.Df8# 1-0

(1288) Weil – Raina

Muenchen, 1936

1.Dxg7+ Cxg7 2.Cf6+ Rh8 [2...Rf8
3.Aa3+] **3.Tc8+ Ce8 4.Txe8+ Rg7**
5.Tg8# 1-0

(1289) Rasmussen – Polkinen

Helsinki, 1933

1.Axh7+ Rxh7 2.Dh5+ Rg8 3.Axg7
Rxg7 4.Dg5+ Rh8 5.Tf3 1-0

(1290) Miles – Browne

Luzern, 1982

1.Axh7+ Rxh7 2.Dh5+ Rg8 3.Axg7
Rxg7 [3...f5 4.Dh8+ Rf7 5.Axf8 Txf8
 6.Dh7+ Re8 7.Dxc7] **4.Dg5+ Rh8** [
 4...Rh7 5.Tc4] **5.Df6+** [5.Tc4 f6 6.Th4+
 Dh7] **5...Rh7 6.Tc4 1-0**

(1291) Koltanowski – Defuss

1936

1.Axh7+ Rxh7 2.Dh5+ Rg8 3.Axg7
Rxg7 4.Dg5+ Rh7 5.Td4 Ah2+ [
 5...Af4 6.Txf4 Dxf4 7.Dxf4] **6.Rh1 Df4**
7.Txf4 Axf4 8.Dxf4 Tg8 9.Te5 1-0

**(1292) Von Holzhausen –
Tarrasch**

Berlin, 1912

1.Axf7+ Rxf7 2.Ce6 Rxe6 3.Dd5+ Rf6
4.Df5# 1-0

(1293) Dubinin – Petrov

Rostow, 1936

1.Cxf7 Rxf7 [1...Dd7 2.C7g5] **2.Cg5+**
Rg8 [2...Re7 3.Cxe6 Dd6 4.Af4]
3.Txe6 Dxd4 [3...Txe6 4.Axe6+ Rh8
 5.Cf7+] **4.Txf6+ 1-0**

(1294) Nikolaiczuk – Cramling

Dortmund, 1986

1...Cxf2 2.Cxa7 [2.Rxf2 Axe3+ 3.Rf1
 Dxh2 4.Af3 Dg1+ 5.Re2 Axc1+; 2.Dc2
 Axe3 3.Cxd8 (3.Af3 Cg4+ 4.Txe3
 Dxh2+ 5.Rf1 Cxe3+) 3...Cg4+ 4.Rf1
 Cxh2#] **2...Cxd1 0-1**

(1295) Karpow – Ribli

Dubai, 1986

1.Dxh7+ [1.Th1 Txd6 2.Dxh7+ Rf8]
1...Rxh7 2.Th2+ Rg8 3.Tdh1 f6
4.Th8+ 1-0

**(1296) Kapengut –
Schereschewski**

UdSSR, 1969

1.Cxe6 fxe6 2.Dxf8+ Txf8 3.Txf8+ Rg7
 [3...Rxf8 4.c7] **4.c7 1-0**

(1297) Tschigorin – Marco

Berlin, 1897

1.Txf7 Dxf7 [1...Txf7 2.Db8+ Tf8
 3.Dxf8#] **2.Txf7 Txf7 3.Da8+ Tf8**
4.Dd5+ Rh8 5.e6 1-0

(1298) Suba – Hawelko

Warschau, 1987

1.Dxb6 axb6 2.Cxe6 Df6+ 3.Cd4 1-0

(1299) Rechlis – Miles

Manila, 1990

1.Txc7+ Txc7 [1...Cxc7 2.Txc7+ Rxc7
 3.a8D] **2.Txc7+ Cxc7 3.h5 Rb7** [
 3...Rd7 4.g6 hxg6 5.h6] **4.g6 hxg6 5.h6**
 [5.hxg6 Ce6] **5...Ce6 6.h7 1-0**

(1300) Steinberg – Makarov

UdSSR, 1966

1.Dxf6+ Rxf6 2.Ad4+ Rg5 3.Ac3+ Rf6
 [3...Rh4 4.Af2+ Rg5 5.Ac3+] **4.Ad4+**
 $\frac{1}{2}$ - $\frac{1}{2}$

LEGENDA:**INTESTAZIONE** il Nero Muove*Edited by Michele Deiana*