

Sacrifices sur le roque

Attaque sur f3

Chapitre 09  
Attaque sur f3

NN – Sarratt, Jacob Henry  
England, 1810

1.e4 e5 2.f4 exf4 3.♘f3 g5 4.♙c4 g4 5.0-0 gxf3 6.♚xf3 ♙h6 7.e5 ♘c6 8.c3 ♚e7  
9.♚d5 ♘xe5 10.♙b3 ♘f6 11.♚b5 c6 12.♚e2

Trait aux Noirs



12...f3!

13.gxf3 ♜g8+ 14.♔h1 d5 15.♘a3 ♘g6 16.♚f2 ♘f4 17.♞e1 ♙e6 18.♚d4 ♘h3  
19.♚h4 ♙g5 20.♚a4 ♙xd2 21.♞f1 ♚c5 22.♚d4 ♚xd4 23.cxd4 ♙xc1 24.♞axc1  
♔d7 25.f4 ♙g4 26.♞c3 ♘e4 27.♞g3 ♙e2 28.♞e1

Trait aux Noirs



28...♙f3+!!

29.♞xf3 ♘hf2+ 30.♞xf2 ♘xf2#

**Diag Trait aux Noirs**



**Wilson, J – NN**

London, 1801

9...f3 10.♔d1 ♘h6 11.h3 ♖g8 12.g4  
 ♗hxg4 13.hxg4 ♖xg4+ 14.♔h1 ♖h4+  
 0-1

**Diag Trait aux Noirs**



**Zekeriski – Boncourt**

Paris, 1839

24...f3 25.g3 f2+ 26.♖xf2 exf2+  
 [26...♙xg3+ 27.♖g2 ♔h3] 27.♙xf2  
 ♖h3 28.♔g2 ♔h6 29.♙f5 ♖h2+  
 30.♔f3 ♔d2 0-1

**Diag Trait aux Noirs**

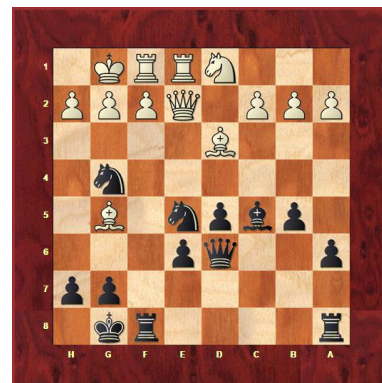


**Spreckley, G – Mongredien, A**

Liverpool, 1845

11...♗f3+ 12.gxf3 ♔g5+ 13.♔f2  
 ♙g2+ 14.♔e1 ♙xh1+ 15.♔f2 ♙f1#

**Diag Trait aux Noirs**



**Mahescandra – Cochrane, J**

Kolkata, 1850

16...♗f3+ 0-1

**Diag Trait aux Noirs**



**Mahescandra – Cochrane, J**  
Kolkata, 1854

19...♘f3+ 20.gxf3 ♖g6+ 21.♔h1 ♚h3  
0-1

**Diag Trait aux Noirs**



**Cochrane, J – Mahescandra**  
Kolkata, 1855

19...♘f3+ 20.♞xf3 ♔xd4+ 21.♔h1  
[21.♚xd4 ♚g5+] 21...♙e3 22.♞xe3  
fxe3 23.♚xe3 ♚h4 (36è 0-1).

**Diag Trait aux Noirs**



**Thompson, DS – Morphy, P**  
New York, 1857

18...♞d3 19.♚b2 ♞xf3 20.♔h1 ♙d4  
21.♚c1 ♞c3 22.♚b2 ♞g3 23.♚c1 ♞xg2  
24.♚f4 ♘f5 25.♚f3 ♞xh2+ 26.♔xh2  
♙xe5+ 27.♞xe5 ♘xe5 28.♚h3 ♘h4  
29.f3 ♚c2+ (42è 0-1).

**Diag Trait aux Noirs**



**Schulten, John W – Morphy, P**  
New York, 1857

17...♘f3+ 18.gxf3 ♚d4+ 19.♔g2  
♚f2+ 20.♔h3 ♚xf3+ 0-1

**Diag Trait aux Noirs**



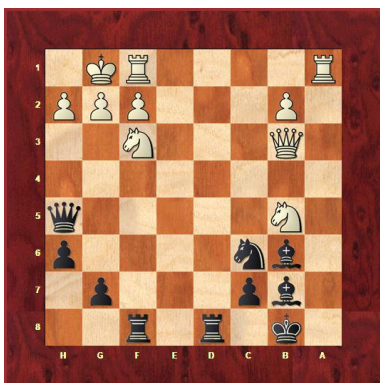
**Lichtenhein, T – Stanley, C H**  
 New York, 1857  
 24...♘f3+ 25.♔f2 ♚xd1 0-1

**Diag Trait aux Noirs**



**Owen, J – Morphy, P**  
 London, 1858  
 13...♖xf3 14.♚xf3 ♘xe5 15.♚g3  
 ♘xd3 16.♚xd3 ♙b5 17.♚h3 ♙xf1  
 18.♚xe6+ ♔h7 19.♔xf1 ♚h5 20.♙f4  
 ♖f8 21.♙g3 ♘f5 0-1

**Diag Trait aux Noirs**



**Maude, G – Kolisch, I**  
 London, 1860  
 23...♖xf3 24.gxf3 [24.♚xf3 ♚xb5]  
 24...♘e5 0-1

**Diag Trait aux Noirs**



**Anderssen, A – Steinitz, W**  
 London, 1862  
 20...♘xf3+ 21.♔h1 [21.♖xf3 ♚xg4+  
 22.♖g3 ♚xc4] 21...♘fe5 22.♙b3  
 ♚xg4 23.♘d2 ♘d3 24.♚c3 ♘h4! 0-1



**Diag Trait aux Noirs**



**Robey, J – Barnes, T W**  
London, 1862

35...f3 36.♘xf3 ♕f4+ 37.♔h1 ♖g8  
38.♔g1 ♖xf3 39.gxf3 ♔xd4+ 40.♔h1  
♔f2 41.♔g1 ♔xf3+ 42.♔g2 ♔e3  
43.♘b1 ♕d3 44.♖xd3 ♔xd3 45.♔b2  
♔xh3+ 46.♔g1 ♕e3+ 0-1

**Diag Trait aux Noirs**



**Von Hanneken, H – Lange, M**  
Duesseldorf, 1862

22...♘f3+ [22...♖g8-+] 23.gxf3 ♕d4+  
24.cxd4 ♖g8+ 25.♔h1 ♔f2 26.♔xc7+  
♔xc7 27.♖ac1+ ♕c6 28.♘e6+ ♔c8  
0-1

**Diag Trait aux Noirs**



**Steinitz, W – Baker, J**  
Great Britain, 1868

27...f3 28.♔xf3 ♖xc4 29.♔f5 ♖g8  
30.f3 ♖d4 31.♖de2 ♔e7 32.♖f2 ♔g3  
33.♔h7+ ♖g7 0-1

**Diag Trait aux Noirs**



**De Vere, Cecil V – Winawer, S**  
Baden–Baden, 1870

21...♖xf3 22.♔xf3 [22.gxf3 ♔b2-+]  
22...♔xa2 0-1

**Diag Trait aux Noirs**



**Blackburne, J H – Burn, A**  
London, 1870

17...♖f3+ 18.gxf3 Abandon  
18...♙xe3+ 19.♔h1 ♚xf1+ 20.♚g1  
♚xg1#

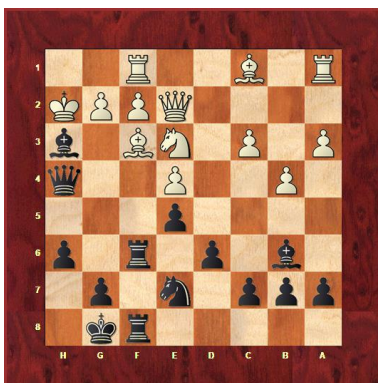
**Diag Trait aux Noirs**



**Fisher – Steinitz, W**  
Britain, 1872

14...♖f3+ 15.♔h1 [15.gxf3 ♚xh3]  
15...♚xh3+ [15...♚g4!] 16.gxh3  
♚xh3+ 17.♔g2 ♚h2+ 18.♔g3 ♙d6+  
19.♔g4 ♚h4+ 20.♔f5 ♚h5+ 21.♔g6  
♚g5+ 22.♔h6 ♙f8+ 23.♔h7 ♔f7  
24.♚h1 ♙g7 0-1

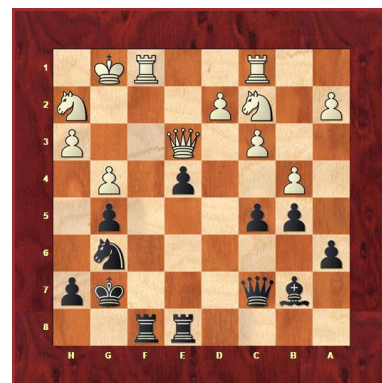
**Diag Trait aux Noirs**



**Blijdenstein, BW – Gifford, HWB**  
The Hague, 1873

22...♚xf3 23.♚xf3 ♙g4+ 24.♚h3  
♙xh3 25.gxh3 ♚xf2+ 26.♚xf2 ♚xf2+  
0-1

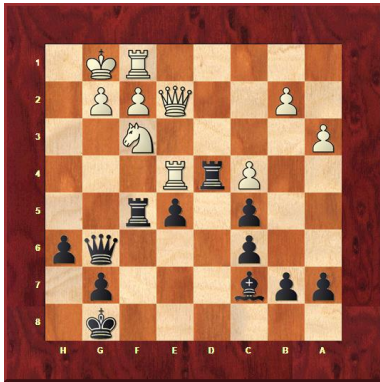
**Diag Trait aux Noirs**



**MacDonnell, G A – Wisker, J**  
London, 1874

26...♚f3 27.♚xf3 exf3 28.♚f2 ♚e2  
29.♖d4 cxd4 30.♚xd4+ ♔h6 0-1

**Diag Trait aux Noirs**



**Van Woelderens,E – Messemaker,C**  
Gouda, 1880

30...♖xf3 31.♖xd4 cxd4 32.♚xf3 e4  
33.♚h3 ♔h7 34.♚d7 ♕e5 35.g3 b6  
36.♚xa7 c5 37.♚a4 e3 38.♚b3 d3  
39.♖e1 exf2+ 40.♔xf2 ♚xg3+ 41.♔f1  
♚h3+ 42.♔g1 ♕d4+ 0-1

**Diag Trait aux Noirs**



**Schalopp,E – Berger,J N**  
Berlin, 1881

26...f3 [26...♖xh2-+] 27.♕xf3 ♖xh2  
28.♖f2 ♖xf3+ 29.♚xf3 cxd4 30.♖g2  
f5 31.exf5 ♖xf5 32.♚d3 ♕f4 33.♚xd4  
♕h2+ 34.♖xh2 ♖xe1+ 35.♔g2 ♖e2+  
0-1

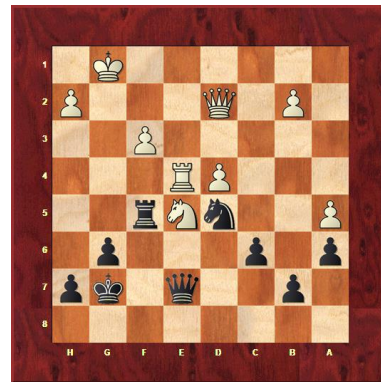
**Diag Trait aux Noirs**



**Paulsen,L – Leffmann,K**  
Nuremberg, 1883

20...♖f3+ 21.♔f2 hxg2 22.♔xg2  
[22.♚xc6 g1♚+ 23.♔xf3 ♕g4+  
24.♔e4 ♚h1+] 22...♖e1+ 23.♔f2  
♚f3+ 24.♔xe1 ♚g3+ 0-1

**Diag Trait aux Noirs**



**Delmar,E – Burille,C F**  
New York, 1889

39...♖xf3 40.♖e1 [40.♖xf3 ♚xe4]  
40...♖f4 (53è 0-1).



**Diag Trait aux Noirs**



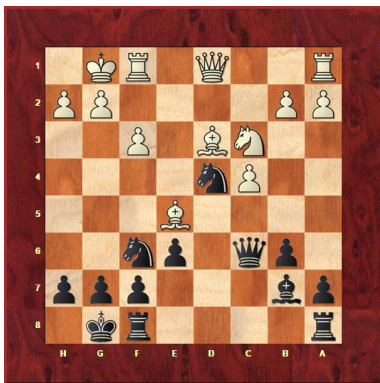
**Heemskerck, J F – Olland, A G**  
 Utrecht, 1891  
 24...♖f3 25.gxf3 ♜g5 26.dxc5 ♚xc5+  
 27.♔g2 ♜xg4+ (39è 0-1).

**Diag Trait aux Noirs**



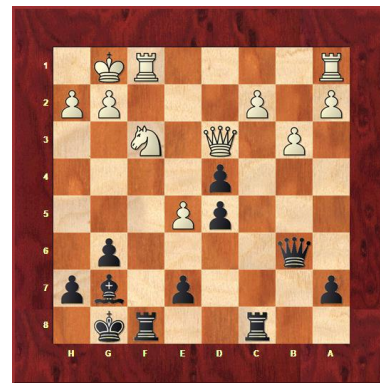
**Sournin, V – Marshall, F J**  
 New York, 1896  
 33...♘f3+ 34.♞xf3 ♚b7! 0-1

**Diag Trait aux Noirs**



**Schlechter, C – Marco, G**  
 Vienna, 1896  
 16...♘xf3+ 17.♚xf3 ♚c5+ 18.♚f2  
 ♚xe5 19.♞ae1 ♚g5 20.♘e4 ♚xe4  
 21.♚xe4 ♞ad8 22.♚f3 ♞d2 23.♞e2  
 ♞fd8 24.♞xd2 ♞xd2 25.♞d1 ♘e4 0-1

**Diag Trait aux Noirs**



**Jonas, W H – Jacobsen, J L**  
 Sydney, 1898  
 20...♞c3 21.♚xd4? ♞xf3 22.c3  
 [22.♚xb6 ♞xf1+ 23.♞xf1 ♞xf1+  
 24.♔xf1 axb6] 22...♞xf1+ 23.♞xf1  
 ♞xf1+ 24.♔xf1 ♚xd4 25.cxd4 ♔f7  
 0-1

**Diag Trait aux Noirs**



**Kulomzin, V N – Alexeev**  
Moscow, 1899

14...♖xf3 15.♖xf3 ♜xh2+ 16.♔f2 ♘h4  
17.♙xd7+ ♖xd7 18.♜g8+ ♘d8 19.♞e3  
♜xg2+ 20.♔e1 ♖f7 21.♘d2 ♜f2+  
22.♔d1 ♜xe3 23.♔c2 g6 24.♘c4  
♜e2+ 25.♔b3 ♜d1#

**Diag Trait aux Noirs**



**Pritzel, S Martin S – Rydberg, C F**  
Copenhagen, 1899

34...♙xf3 35.♜xf3 e2 36.♜d5+ ♔h8  
0-1

**Diag Trait aux Noirs**



**Passmore, S – Lawrence, T F**  
London, 1900  
30...♘f3+ 0-1

**Diag Trait aux Noirs**



**Fahrni, H – Moller, J**  
Hannover, 1902  
24...♖xf3 25.♜d2 [25.gxf3 ♙xh3]  
25...♙xf2+ 26.♔f1 ♙xe1+ 0-1

**Diag Trait aux Noirs**



**Von Scheve,T – Pillsbury,H N**  
Monte Carlo, 1902

20...♘f3+ 21.gxf3 ♙xf3 22.♙h3 ♚g6+  
23.♙f1 ♚h5 0-1

**Diag Trait aux Noirs**



**Gunsberg,I – Janowski,D M**  
Hannover, 1902

28...♘f3+ 29.♙h1 [29.gxf3 ♚xh3]  
29...♚xh3+ Abandon 30.gxh3 ♜h2#

**Diag Trait aux Noirs**



**Johner,P F – Vidmar,M**  
Coburg, 1904

18...♘f3+ 19.♚xf3 fxe6 20.♚g3 ♘f4  
21.♙h2 hxg5 22.e5 b5 23.cxb5 cxb5  
24.♙c2 ♙b7 25.♚xg5 ♘d3 26.♜f1  
♘e1 27.♚g6 ♘xc2 28.♚xc2 ♜f3  
29.♙xd6 ♚f7 0-1

**Diag Trait aux Noirs**



**Chigorin,M – Schlechter,C**  
Barmen, 1905

35...♘f3+ 36.gxf3 ♘xh3+ 37.♙g2  
♚xf2+ 38.♙xh3 ♚xf3+ 39.♙h2 ♚xe3  
40.♙g2 h5 41.♚xc7 ♚xd3 42.♙f2 h4  
43.♚f7 ♚d2+ 44.♙g1 ♚e3+ 45.♙h1  
♚xe4+ 0-1